




## Product datasheet

# Anti-RPS5 antibody ab168823

[1 References](#) [4 Images](#)

### Overview

<b>Product name</b>	Anti-RPS5 antibody
<b>Description</b>	Rabbit polyclonal to RPS5
<b>Host species</b>	Rabbit
<b>Tested applications</b>	<b>Suitable for:</b> IHC-P, WB, IP
<b>Species reactivity</b>	<b>Reacts with:</b> Mouse, Human <b>Predicted to work with:</b> Rabbit, Horse, Guinea pig, Cow, Dog, Pig, Chimpanzee, Rhesus monkey, Gorilla, Orangutan, Elephant 
<b>Immunogen</b>	Synthetic peptide corresponding to Human RPS5 aa 1-100. Database link: <a href="#">P46782</a> <div>  <a href="#">Run BLAST with</a>  <a href="#">Run BLAST with</a> </div>
<b>Positive control</b>	WB: 293T, HeLa, Jurkat, Mouse TCMK-1 and Mouse NIH3T3 whole cell lysates. IP: HeLa cell lysates. IHC-P: Human prostate carcinoma tissue; Mouse teratoma tissue.
<b>General notes</b>	<p>The Life Science industry has been in the grips of a reproducibility crisis for a number of years. Abcam is leading the way in addressing this with our range of recombinant monoclonal antibodies and knockout edited cell lines for gold-standard validation. Please check that this product meets your needs before purchasing.</p> <p>If you have any questions, special requirements or concerns, please send us an inquiry and/or contact our Support team ahead of purchase. Recommended alternatives for this product can be found below, along with publications, customer reviews and Q&amp;As</p>

### Properties

<b>Form</b>	Liquid
<b>Storage instructions</b>	Shipped at 4°C. Store at +4°C short term (1-2 weeks). Upon delivery aliquot. Store at -20°C long term.
<b>Storage buffer</b>	pH: 7 Preservative: 0.09% Sodium azide Constituent: 99% Tris citrate/phosphate  pH 7 to 8
<b>Purity</b>	Immunogen affinity purified

<b>Clonality</b>	Polyclonal
<b>Isotype</b>	IgG

## Applications

**The Abpromise guarantee** Our **Abpromise guarantee** covers the use of ab168823 in the following tested applications. The application notes include recommended starting dilutions; optimal dilutions/concentrations should be determined by the end user.

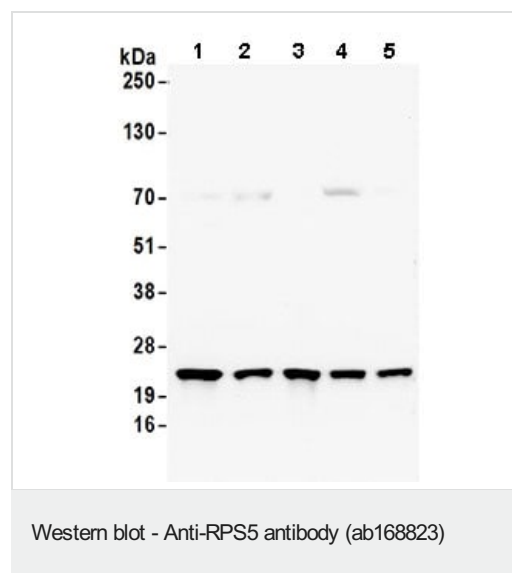
Application	Abreviews	Notes
<b>IHC-P</b>		1/500 - 1/2000. Perform heat mediated antigen retrieval with citrate buffer pH 6 before commencing with IHC staining protocol.
<b>WB</b>		1/2000 - 1/10000. Predicted molecular weight: 23 kDa.
<b>IP</b>		Use at 2-10 µg/mg of lysate.

## Target

**Relevance** RPS5 is a component of the small 40S subunit of ribosomes. The protein belongs to the S7P family of ribosomal proteins and is found in the cytoplasm.

**Cellular localization** Cytoplasmic

## Images



**All lanes** : Anti-RPS5 antibody (ab168823) at 0.1 µg/ml

**Lane 1** : 293T whole cell lysate

**Lane 2** : HeLa whole cell lysate

**Lane 3** : Jurkat whole cell lysate

**Lane 4** : TCMK-1 whole cell lysate

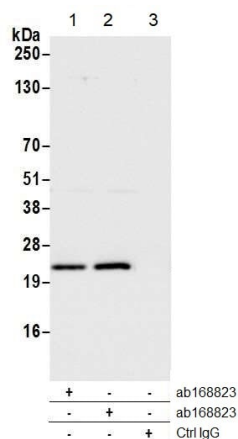
**Lane 5** : NIH3T3 whole cell lysate

Lysates/proteins at 50 µg per lane.

Developed using the ECL technique.

**Predicted band size:** 23 kDa

**Exposure time:** 30 seconds

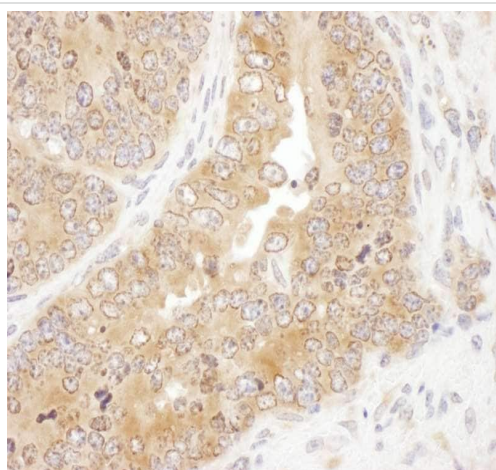


Immunoprecipitation - Anti-RPS5 antibody  
(ab168823)

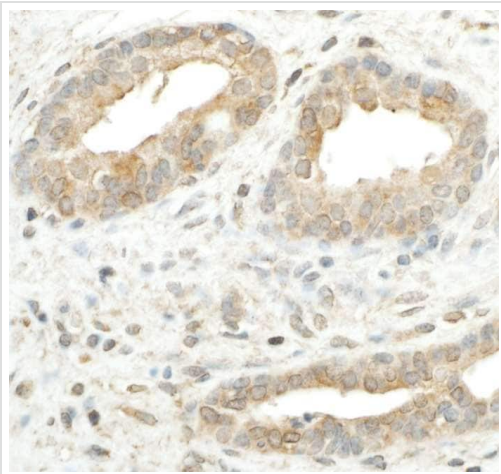
**Samples:** Whole cell lysate (1.0 mg per IP reaction; 20% of IP loaded) from HeLa cells prepared using NETN lysis buffer. **Antibodies:** ab168823 used for IP at 6 µg per reaction (Lane 2). RPS5 was also immunoprecipitated by a previous lot of this antibody (Lane 1). For blotting immunoprecipitated RPS5 ab168823 was used at 0.04 µg/ml. **Detection:** Chemiluminescence with an exposure time of 1 second.

**All lanes :** Anti-RPS5 antibody (ab168823) at 6 mg/ml

**All lanes :** HeLa (Human cervix adenocarcinoma epithelial cell) whole cell lysate (1 mg per IP reaction; 20% of IP loaded)



Anti-RPS5 antibody (ab168823)



Immunohistochemistry analysis of formalin-fixed, paraffin-embedded human prostate carcinoma labeling RPS5 with ab168823 at a 1/1000 dilution.

Immunohistochemistry (Formalin/PFA-fixed paraffin-embedded sections) - Anti-RPS5 antibody (ab168823)

**Please note:** All products are "FOR RESEARCH USE ONLY. NOT FOR USE IN DIAGNOSTIC PROCEDURES"

#### **Our Abpromise to you: Quality guaranteed and expert technical support**

---

- Replacement or refund for products not performing as stated on the datasheet
- Valid for 12 months from date of delivery
- Response to your inquiry within 24 hours
- We provide support in Chinese, English, French, German, Japanese and Spanish
- Extensive multi-media technical resources to help you
- We investigate all quality concerns to ensure our products perform to the highest standards

If the product does not perform as described on this datasheet, we will offer a refund or replacement. For full details of the Abpromise, please visit <https://www.abcam.com/abpromise> or contact our technical team.

#### **Terms and conditions**

---

- Guarantee only valid for products bought direct from Abcam or one of our authorized distributors