

Product datasheet

Anti-RRM2 antibody [1E1] ab57653

★★★★☆ [3 Abreviews](#) [36 References](#) [6 Images](#)

Overview

Product name	Anti-RRM2 antibody [1E1]
Description	Mouse monoclonal [1E1] to RRM2
Host species	Mouse
Tested applications	Suitable for: WB, IHC-P, ICC/IF, Flow Cyt
Species reactivity	Reacts with: Human
Immunogen	Recombinant fragment, corresponding to amino acids 1-111 of Human RRM2
General notes	<p>This product was changed from ascites to tissue culture supernatant on 12/3/19. Please note that the dilutions may need to be adjusted accordingly. If you have any questions, please do not hesitate to contact our scientific support team.</p> <p>The Life Science industry has been in the grips of a reproducibility crisis for a number of years. Abcam is leading the way in addressing this with our range of recombinant monoclonal antibodies and knockout edited cell lines for gold-standard validation. Please check that this product meets your needs before purchasing.</p> <p>If you have any questions, special requirements or concerns, please send us an inquiry and/or contact our Support team ahead of purchase. Recommended alternatives for this product can be found below, along with publications, customer reviews and Q&As</p>

Properties

Form	Liquid
Storage instructions	Shipped at 4°C. Upon delivery aliquot and store at -20°C or -80°C. Avoid repeated freeze / thaw cycles.
Storage buffer	pH: 7.40 Constituent: 100% PBS
Purity	Protein A purified
Clonality	Monoclonal
Clone number	1E1
Isotype	IgG1
Light chain type	kappa

Applications

The Abpromise guarantee

Our **Abpromise guarantee** covers the use of ab57653 in the following tested applications.

The application notes include recommended starting dilutions; optimal dilutions/concentrations should be determined by the end user.

Application	Abreviews	Notes
WB	★★★★★ (3)	Use at an assay dependent concentration. Predicted molecular weight: 45 kDa.
IHC-P		Use at an assay dependent concentration.
ICC/IF		Use at an assay dependent concentration.
Flow Cyt		Use at an assay dependent concentration. ab170190 - Mouse monoclonal IgG1, is suitable for use as an isotype control with this antibody.

Target

Function

Provides the precursors necessary for DNA synthesis. Catalyzes the biosynthesis of deoxyribonucleotides from the corresponding ribonucleotides. Inhibits Wnt signaling.

Pathway

Genetic information processing; DNA replication.

Sequence similarities

Belongs to the ribonucleoside diphosphate reductase small chain family.

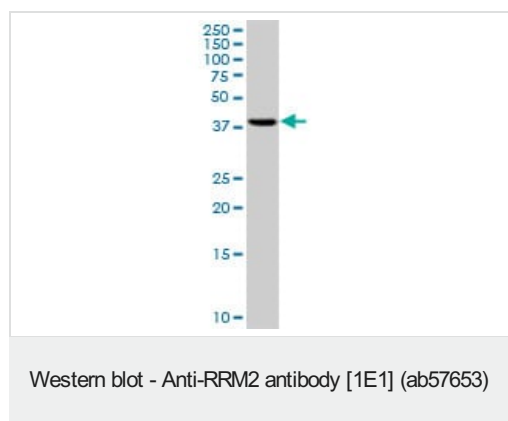
Post-translational modifications

Phosphorylation on Ser-20 relieves the inhibitory effect on Wnt signaling.

Cellular localization

Cytoplasm.

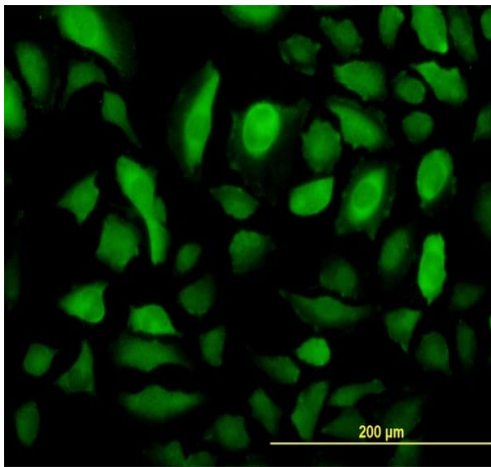
Images



Anti-RRM2 antibody [1E1] (ab57653) at 1 µg/ml + HepG2 (human liver hepatocellular carcinoma cell line) cell lysate

Predicted band size: 45 kDa

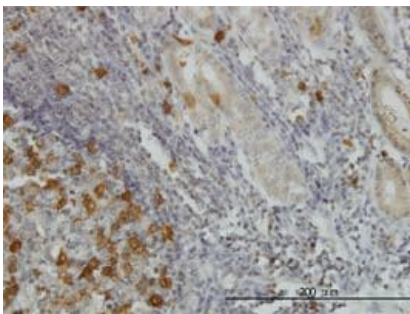
This image was generated using the ascites version of the product.



Immunocytochemistry/ Immunofluorescence - Anti-RRM2 antibody [1E1] (ab57653)

HeLa (human epithelial cell line from cervix adenocarcinoma) cells stained for RRM2 (green) using ab57653 at 10 μg/ml in ICC/IF.

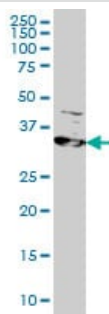
This image was generated using the ascites version of the product.



Immunohistochemistry (Formalin/PFA-fixed paraffin-embedded sections) - Anti-RRM2 antibody [1E1] (ab57653)

RRM2 antibody (ab57653) used in immunohistochemistry at 5ug/ml on formalin fixed and paraffin embedded human stomach.

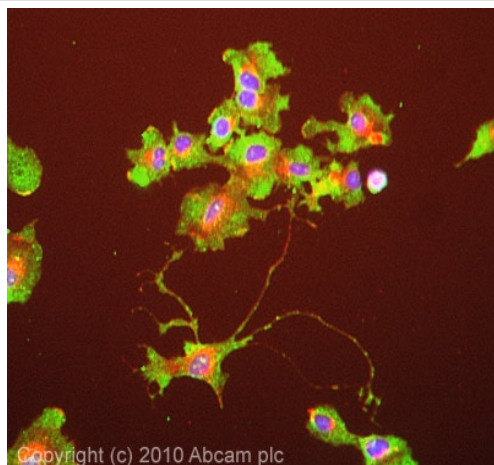
This image was generated using the ascites version of the product.



Western blot - Anti-RRM2 antibody [1E1] (ab57653)

RRM2 antibody (ab57653) at 1 ug/lane + HeLa cell lysate at 25ug/lane.

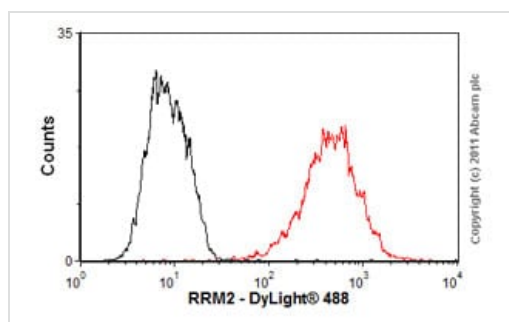
This image was generated using the ascites version of the product.



Immunocytochemistry/ Immunofluorescence - Anti-RRM2 antibody [1E1] (ab57653)

ICC/IF image of ab57653 stained HepG2 cells. The cells were 100% methanol fixed (5 min) and then incubated in 1%BSA / 10% normal goat serum / 0.3M glycine in 0.1% PBS-Tween for 1h to permeabilise the cells and block non-specific protein-protein interactions. The cells were then incubated with the antibody (ab57653, 10µg/ml) overnight at +4°C. The secondary antibody (green) was Alexa Fluor® 488 goat anti-mouse IgG (H+L) used at a 1/1000 dilution for 1h. Alexa Fluor® 594 WGA was used to label plasma membranes (red) at a 1/200 dilution for 1h. DAPI was used to stain the cell nuclei (blue) at a concentration of 1.43µM.

This image was generated using the ascites version of the product.



Flow Cytometry - Anti-RRM2 antibody [1E1] (ab57653)

Overlay histogram showing HepG2 cells stained with ab57653 (red line). The cells were fixed with 80% methanol (5 min) and then permeabilized with 0.1% PBS-Tween for 20 min. The cells were then incubated in 1x PBS / 10% normal goat serum / 0.3M glycine to block non-specific protein-protein interactions followed by the antibody (ab57653, 1µg/1x10⁶ cells) for 30 min at 22°C. The secondary antibody used was DyLight® 488 goat anti-mouse IgG (H+L) ([ab96879](#)) at 1/500 dilution for 30 min at 22°C. Isotype control antibody (black line) was mouse IgG1 [ICIGG1] ([ab91353](#), 2µg/1x10⁶ cells) used under the same conditions. Acquisition of >5,000 events was performed.

This image was generated using the ascites version of the product.

Please note: All products are "FOR RESEARCH USE ONLY. NOT FOR USE IN DIAGNOSTIC PROCEDURES"

Our Abpromise to you: Quality guaranteed and expert technical support

- Replacement or refund for products not performing as stated on the datasheet
- Valid for 12 months from date of delivery
- Response to your inquiry within 24 hours
- We provide support in Chinese, English, French, German, Japanese and Spanish
- Extensive multi-media technical resources to help you
- We investigate all quality concerns to ensure our products perform to the highest standards

If the product does not perform as described on this datasheet, we will offer a refund or replacement. For full details of the Abpromise,

please visit <https://www.abcam.com/abpromise> or contact our technical team.

Terms and conditions

- Guarantee only valid for products bought direct from Abcam or one of our authorized distributors