

Product datasheet

Anti-Rsk 2 / MAPKAP Kinase 1b antibody [Y83] ab32133


KO **VALIDATED**

Recombinant

RabMAb[®]

[3 References](#) [4 Images](#)

Overview

Product name	Anti-Rsk 2 / MAPKAP Kinase 1b antibody [Y83]
Description	Rabbit monoclonal [Y83] to Rsk 2 / MAPKAP Kinase 1b
Host species	Rabbit
Specificity	The antibody recognises Rsk2. It does not cross react with other S6 kinase family members.
Tested applications	Suitable for: WB, IHC-P Unsuitable for: ICC/IF
Species reactivity	Reacts with: Human Predicted to work with: Mouse, Rat 
Immunogen	Synthetic peptide. This information is proprietary to Abcam and/or its suppliers.
Positive control	HeLa whole cell lysate (ab150035) and human lymphoma
General notes	This product is a recombinant monoclonal antibody, which offers several advantages including: <ul style="list-style-type: none"> - High batch-to-batch consistency and reproducibility - Improved sensitivity and specificity - Long-term security of supply - Animal-free production For more information see here . Our RabMAb [®] technology is a patented hybridoma-based technology for making rabbit monoclonal antibodies. For details on our patents, please refer to RabMAb[®] patents .

Properties

Form	Liquid
Storage instructions	Shipped at 4°C. Upon delivery aliquot and store at -20°C. Avoid freeze / thaw cycles.
Storage buffer	pH: 7.20 Preservative: 0.01% Sodium azide Constituents: 49% PBS, 50% Glycerol (glycerin, glycerine), 0.05% BSA
Purity	Protein A purified
Clonality	Monoclonal
Clone number	Y83

Isotype

IgG

Applications

The Abpromise guarantee

Our **Abpromise guarantee** covers the use of ab32133 in the following tested applications.

The application notes include recommended starting dilutions; optimal dilutions/concentrations should be determined by the end user.

Application	Abreviews	Notes
WB		1/5000. Detects a band of approximately 90 kDa (predicted molecular weight: 84 kDa).
IHC-P		Use at an assay dependent concentration. Perform heat mediated antigen retrieval with citrate buffer pH 6 before commencing with IHC staining protocol.

Application notes

Is unsuitable for ICC/IF.

Target

Function

Serine/threonine kinase that may play a role in mediating the growth-factor and stress induced activation of the transcription factor CREB.

Tissue specificity

Expressed in many tissues, highest levels in skeletal muscle.

Involvement in disease

Defects in RPS6KA3 are the cause of Coffin-Lowry syndrome (CLS) [MIM:303600]; an X-linked dominant disorder characterized by severe mental retardation with facial and digital dysmorphisms, and progressive skeletal deformations.

Sequence similarities

Belongs to the protein kinase superfamily. AGC Ser/Thr protein kinase family. S6 kinase subfamily.

Contains 1 AGC-kinase C-terminal domain.

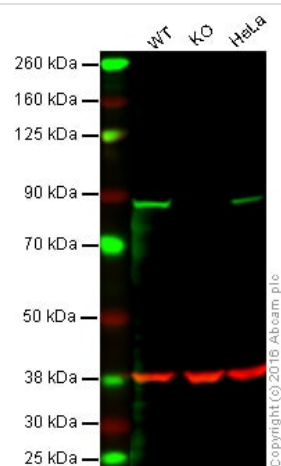
Contains 2 protein kinase domains.

Post-translational modifications

Autophosphorylated on Ser-386, as part of the activation process.

Ser-227 phosphorylation promotes Ser-386 phosphorylation and leads to basal activation. Full activation by growth factors requires additional phosphorylation on Ser-369.

Images



Western blot - Anti-Rsk 2 / MAPKAP Kinase 1b antibody [Y83] (ab32133)

Lane 1: Wild-type HAP1 cell lysate (40 µg)

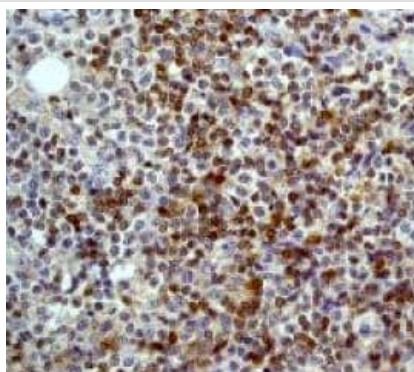
Lane 2: Rsk 2 / MAPKAP Kinase 1b knockout HAP1 cell lysate (40 µg)

Lane 3: HeLa cell lysate (40 µg)

Lane 4: (40 µg)

Lanes 1 - 4: Merged signal (red and green). Green - ab32133 observed at 88 kDa. Red - loading control, **ab8245**, observed at 37 kDa.

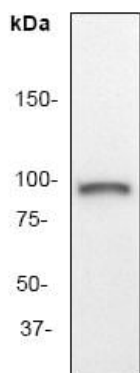
ab32133 was shown to specifically react with Rsk 2 / MAPKAP Kinase 1b when Rsk 2 / MAPKAP Kinase 1b knockout samples were used. Wild-type and Rsk 2 / MAPKAP Kinase 1b knockout samples were subjected to SDS-PAGE. Ab32133 and **ab8245** (loading control to GAPDH) were diluted at 1/5000 and 1:10,000 dilution respectively and incubated overnight at 4°C. Blots were developed with Goat anti-Rabbit IgG H&L (IRDye® 800CW) preadsorbed **ab216773** and Goat anti-Mouse IgG H&L (IRDye® 680RD) preadsorbed **ab216776** secondary antibodies at 1:10,000 dilution for 1 hour at room temperature before imaging.



Immunohistochemistry (Formalin/PFA-fixed paraffin-embedded sections) - Anti-Rsk 2 / MAPKAP Kinase 1b antibody [Y83] (ab32133)

ab32133, staining human lymphoma by immunohistochemistry, Paraffin embedded tissue

Perform heat mediated antigen retrieval with citrate buffer pH 6 before commencing with IHC staining protocol.



Anti-Rsk 2 / MAPKAP Kinase 1b antibody [Y83] (ab32133) at
1/5000 dilution + HeLa cell lysate

Predicted band size: 84 kDa

Observed band size: 90 kDa

Western blot - Anti-Rsk 2 / MAPKAP Kinase 1b
antibody [Y83] (ab32133)

Why choose a
recombinant antibody?



**Research with
confidence**
Consistent and
reproducible results



**Long-term and
scalable supply**
Recombinant
technology



**Success from the
first experiment**
Confirmed
specificity



**Ethical standards
compliant**
Animal-free
production

Anti-Rsk 2 / MAPKAP Kinase 1b antibody [Y83]
(ab32133)

Please note: All products are "FOR RESEARCH USE ONLY. NOT FOR USE IN DIAGNOSTIC PROCEDURES"

Our Abpromise to you: Quality guaranteed and expert technical support

- Replacement or refund for products not performing as stated on the datasheet
- Valid for 12 months from date of delivery
- Response to your inquiry within 24 hours
- We provide support in Chinese, English, French, German, Japanese and Spanish
- Extensive multi-media technical resources to help you
- We investigate all quality concerns to ensure our products perform to the highest standards

If the product does not perform as described on this datasheet, we will offer a refund or replacement. For full details of the Abpromise, please visit <https://www.abcam.com/abpromise> or contact our technical team.

Terms and conditions

- Guarantee only valid for products bought direct from Abcam or one of our authorized distributors