

Product datasheet

Anti-RSPH4A antibody ab122159

4 Images

Overview

Product name	Anti-RSPH4A antibody
Description	Rabbit polyclonal to RSPH4A
Host species	Rabbit
Tested applications	Suitable for: ICC/IF, IHC-P, WB
Species reactivity	Reacts with: Human
Immunogen	antigen sequence: DVSYNNAKQK ELRFDFVQEE DSNSDYDLQQ PAPGGSEVAP SMLEITIQNA KAYLLKTSSN SGFNLYDHLS NMLTKI, corresponding to amino acids 165-240 of Human RSPH4A. Run BLAST with Expasy Run BLAST with NCBI
Positive control	Human kidney tissue; RT4 and U51MG lysates; A431 cells
General notes	<p>The Life Science industry has been in the grips of a reproducibility crisis for a number of years. Abcam is leading the way in addressing this with our range of recombinant monoclonal antibodies and knockout edited cell lines for gold-standard validation. Please check that this product meets your needs before purchasing.</p> <p>If you have any questions, special requirements or concerns, please send us an inquiry and/or contact our Support team ahead of purchase. Recommended alternatives for this product can be found below, along with publications, customer reviews and Q&As</p>

Properties

Form	Liquid
Storage instructions	Shipped at 4°C. Upon delivery aliquot and store at -20°C. Avoid freeze / thaw cycles.
Storage buffer	pH: 7.20 Preservative: 0.02% Sodium azide Constituents: 40% Glycerol (glycerin, glycerine), 59% PBS
Purity	Immunogen affinity purified
Clonality	Polyclonal
Isotype	IgG

Applications

The Abpromise guarantee

Our **Abpromise guarantee** covers the use of ab122159 in the following tested applications.

The application notes include recommended starting dilutions; optimal dilutions/concentrations should be determined by the end user.

Application	Abreviews	Notes
ICC/IF		Use a concentration of 0.25 - 2 µg/ml.
IHC-P		1/50 - 1/200. Perform heat mediated antigen retrieval with citrate buffer pH 6 before commencing with IHC staining protocol.
WB		1/250 - 1/500.

Target

Function

Probable component of the axonemal radial spoke head. Radial spokes are regularly spaced along cilia, sperm and flagella axonemes. They consist of a thin stalk which is attached to a subfiber of the outer doublet microtubule, and a bulbous head which is attached to the stalk and appears to interact with the projections from the central pair of microtubules.

Involvement in disease

Defects in RSPH4A are the cause of primary ciliary dyskinesia type 11 (CILD11) [MIM:612649]. CILD is an autosomal recessive disorder characterized by axonemal abnormalities of motile cilia. Respiratory infections leading to chronic inflammation and bronchiectasis are recurrent, due to defects in the respiratory cilia; reduced fertility is often observed in male patients due to abnormalities of sperm tails. Half of the patients exhibit situs inversus, due to dysfunction of monocilia at the embryonic node and randomization of left-right body asymmetry. Primary ciliary dyskinesia associated with situs inversus is referred to as Kartagener syndrome.

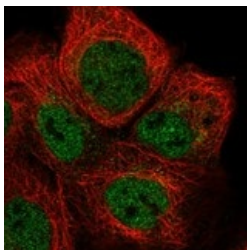
Sequence similarities

Belongs to the flagellar radial spoke RSP4/6 family.

Cellular localization

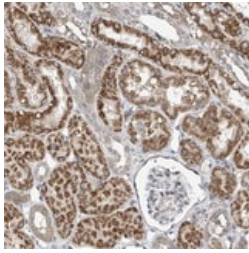
Cytoplasm > cytoskeleton > cilium axoneme. Radial spoke.

Images



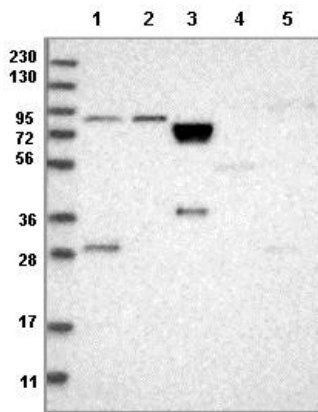
ab122159 at 4 µg/ml staining RSPH4A in PFA/Triton X-100 fixed/permeabilized A431 cells by Immunofluorescence(green).

Immunocytochemistry/ Immunofluorescence - Anti-RSPH4A antibody (ab122159)



Immunohistochemistry (Formalin/PFA-fixed paraffin-embedded sections) - Anti-RSPH4A antibody (ab122159)

ab122159 at 1/100 dilution staining RSPH4A in Paraffin-embedded Human Kidney tissue by Immunohistochemistry.



Western blot - Anti-RSPH4A antibody (ab122159)

All lanes : Anti-RSPH4A antibody (ab122159) at 1/250 dilution

Lane 1 : RT4 lysate

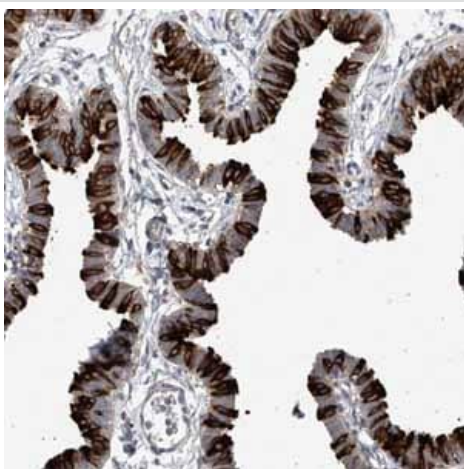
Lane 2 : U251MG lysate

Lane 3 : Human plasma

Lane 4 : Human liver lysate

Lane 5 : Human tonsil lysate

Developed using the ECL technique.



Immunohistochemistry (Formalin/PFA-fixed paraffin-embedded sections) - Anti-RSPH4A antibody (ab122159)

Immunohistochemical staining of Human fallopian tube shows strong positivity in ciliated cells using ab122159

Please note: All products are "FOR RESEARCH USE ONLY. NOT FOR USE IN DIAGNOSTIC PROCEDURES"

Our Abpromise to you: Quality guaranteed and expert technical support

- Replacement or refund for products not performing as stated on the datasheet
- Valid for 12 months from date of delivery
- Response to your inquiry within 24 hours

- We provide support in Chinese, English, French, German, Japanese and Spanish
- Extensive multi-media technical resources to help you
- We investigate all quality concerns to ensure our products perform to the highest standards

If the product does not perform as described on this datasheet, we will offer a refund or replacement. For full details of the Abpromise, please visit <https://www.abcam.com/abpromise> or contact our technical team.

Terms and conditions

- Guarantee only valid for products bought direct from Abcam or one of our authorized distributors