

Product datasheet

Anti-S100 alpha 2/S100A2 antibody [EPR5392] ab109494

Recombinant RabMAb

[12 References](#) [7 Images](#)

Overview

Product name	Anti-S100 alpha 2/S100A2 antibody [EPR5392]
Description	Rabbit monoclonal [EPR5392] to S100 alpha 2/S100A2
Host species	Rabbit
Tested applications	Suitable for: Flow Cyt (Intra), ICC/IF, WB, IP, IHC-P
Species reactivity	Reacts with: Human
Immunogen	Synthetic peptide. This information is proprietary to Abcam and/or its suppliers.
Positive control	WB: HACAT, BxPC3, HeLa and A431 cell lysates; IHC: Human skin and human lung carcinoma tissues IP: HaCaT. ICC/IF: A431 (Human epidermoid carcinoma epithelial cell) cells Flow cyto(intra): A431 (Human epidermoid carcinoma epithelial cell) cells
General notes	<p>This product is a recombinant monoclonal antibody, which offers several advantages including:</p> <ul style="list-style-type: none"> - High batch-to-batch consistency and reproducibility - Improved sensitivity and specificity - Long-term security of supply - Animal-free production <p>For more information see here.</p> <p>Our RabMAb[®] technology is a patented hybridoma-based technology for making rabbit monoclonal antibodies. For details on our patents, please refer to RabMAb[®] patents.</p> <p>Mouse, Rat: We have preliminary internal testing data to indicate this antibody may not react with these species. Please contact us for more information.</p>

Properties

Form	Liquid
Storage instructions	Shipped at 4°C. Store at -20°C. Stable for 12 months at -20°C.
Storage buffer	<p>pH: 7.20</p> <p>Preservative: 0.05% Sodium azide</p> <p>Constituents: 0.1% BSA, 40% Glycerol (glycerin, glycerine), 9.85% Tris glycine, 50% Tissue culture supernatant</p>
Purity	Protein A purified

Clonality	Monoclonal
Clone number	EPR5392
Isotype	IgG

Applications

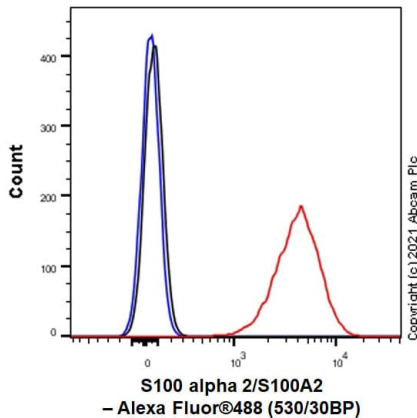
The Abpromise guarantee Our **Abpromise guarantee** covers the use of ab109494 in the following tested applications. The application notes include recommended starting dilutions; optimal dilutions/concentrations should be determined by the end user.

Application	Abreviews	Notes
Flow Cyt (Intra)		1/100 - 1/1000. ab172730 - Rabbit monoclonal IgG, is suitable for use as an isotype control with this antibody.
ICC/IF		Use at an assay dependent concentration.
WB		1/1000 - 1/10000. Predicted molecular weight: 11 kDa.
IP		1/10 - 1/100.
IHC-P		1/250 - 1/500. Perform heat mediated antigen retrieval via the pressure cooker method before commencing with IHC staining protocol.

Target

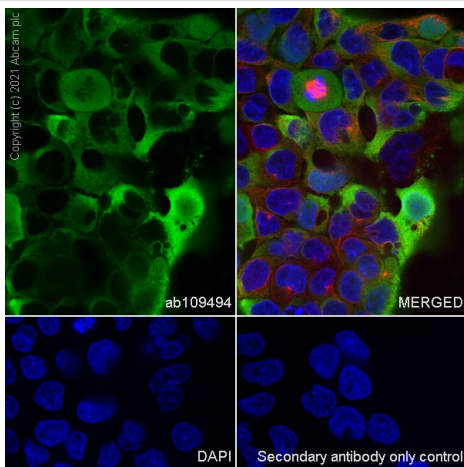
Function	May function as calcium sensor and modulator, contributing to cellular calcium signaling. May function by interacting with other proteins, such as TPR-containing proteins, and indirectly play a role in many physiological processes. May also play a role in suppressing tumor cell growth.
Tissue specificity	A subset of epithelial cells including normal human mammary epithelial cells and keratinocytes.
Sequence similarities	Belongs to the S-100 family. Contains 2 EF-hand domains.
Developmental stage	Preferentially expressed in normal human mammary epithelial cells as opposed to tumor-derived ones. The level of S100L was shown to correlate inversely with tumor progression.

Images



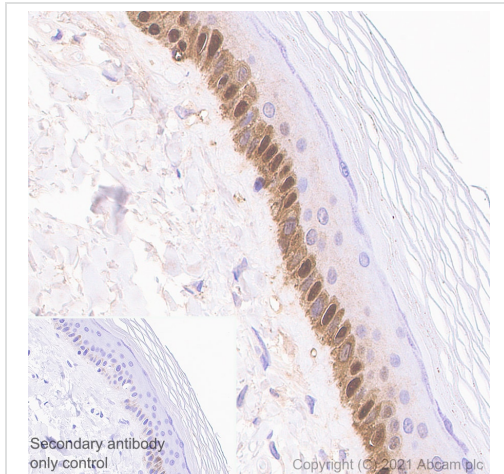
Flow Cytometry (Intracellular) - Anti-S100 alpha 2/S100A2 antibody [EPR5392] (ab109494)

Intracellular Flow Cytometry analysis of A431 (Human epidermoid carcinoma epithelial cell) cells labeling S100 alpha 2 with purified ab109494 at 1/20 dilution (10 ug/ml) (Red). Cells were fixed with 80% Methanol and permeabilised with 0.1% Tween-20. A Goat anti rabbit IgG (Alexa Fluor® 488, [ab150081](#)) (1/2000 dilution) was used as the secondary antibody. Rabbit monoclonal IgG (Black) was used as a isotype control. Cell without incubation with primary antibody and secondary antibody (Blue) were used as unlabeled control.



Immunocytochemistry/ Immunofluorescence - Anti-S100 alpha 2/S100A2 antibody [EPR5392] (ab109494)

Immunocytochemistry/ Immunofluorescence analysis of A431 (Human epidermoid carcinoma epithelial cell) cells labeling S100 alpha 2 using ab109494. The cells were fixed with 100% Methanol then permeabilized with 0.1% Triton X-100. The cells were then incubated with ab109494 at 1:100 dilution followed by a further incubation with a Goat anti rabbit IgG (Alexa Fluor® 488, [ab150077](#)) at 2 µg/ml (shown in green). Nuclear DNA was labelled in blue with DAPI. Cells were counterstained using [ab195889](#) Anti-alpha Tubulin antibody [DM1A] - Microtubule Marker (Alexa Fluor® 594) at 1:200 dilution (shown in red). Secondary antibody only control: PBS instead of the primary antibody.

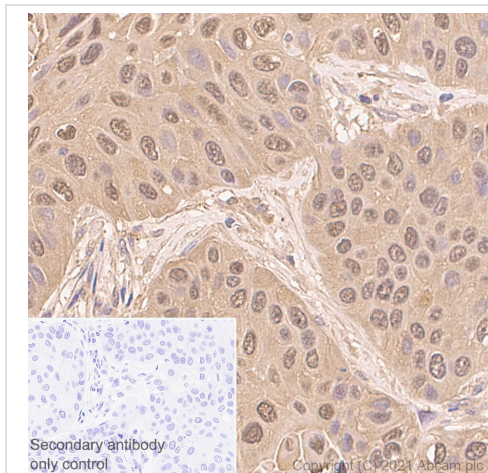


Immunohistochemistry (Formalin/PFA-fixed paraffin-embedded sections) - Anti-S100 alpha 2/S100A2 antibody [EPR5392] (ab109494)

Immunohistochemical analysis of Paraffin-embedded sections human skin tissue labelling S100 alpha 2 with ab109494 at 1/1000 dilution, followed by a ready to use secondary Rabbit specific IHC polymer detection kit HRP/DAB (**ab209101**). Staining on human skin tissue is observed. Counter stained with Haematoxylin. Secondary antibody only control: Used PBS instead of primary antibody, secondary antibody is ready to use Rabbit specific IHC polymer detection kit HRP/DAB (**ab209101**).

Heat mediated antigen retrieval using Bond™ Epitope Retrieval Solution 2 (pH 9.0).

The immunostaining was performed on a Leica Biosystems BOND® RX instrument.



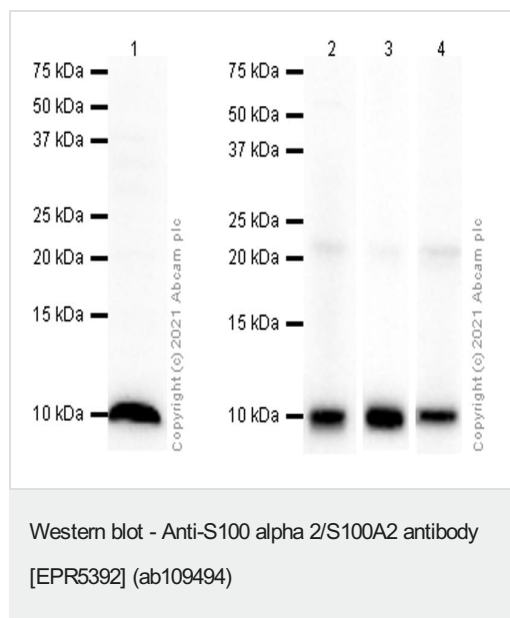
Immunohistochemistry (Formalin/PFA-fixed paraffin-embedded sections) - Anti-S100 alpha 2/S100A2 antibody [EPR5392] (ab109494)

Immunohistochemical analysis of Paraffin-embedded sections human lung carcinoma tissue labelling S100 alpha 2 with ab109494 at 1/1000 dilution, followed by a ready to use secondary Rabbit specific IHC polymer detection kit HRP/DAB (**ab209101**). Staining on human lung carcinoma tissue is observed. Counter stained with Haematoxylin.

Secondary antibody only control: Used PBS instead of primary antibody, secondary antibody is ready to use Rabbit specific IHC polymer detection kit HRP/DAB (**ab209101**).

Heat mediated antigen retrieval using Bond™ Epitope Retrieval Solution 2 (pH 9.0).

The immunostaining was performed on a Leica Biosystems BOND® RX instrument.



All lanes : Anti-S100 alpha 2/S100A2 antibody [EPR5392] (ab109494) at 1/1000 dilution

Lane 1 : HeLa (Human cervix adenocarcinoma epithelial cell) whole cell lysate at 20 µg

Lane 2 : HaCaT (Human skin keratinocyte) whole cell lysate at 15 µg

Lane 3 : BxPC-3 (Human pancreas adenocarcinoma epithelial cell) whole cell lysate at 15 µg

Lane 4 : A431 (Human epidermoid carcinoma epithelial cell) whole cell lysate at 15 µg

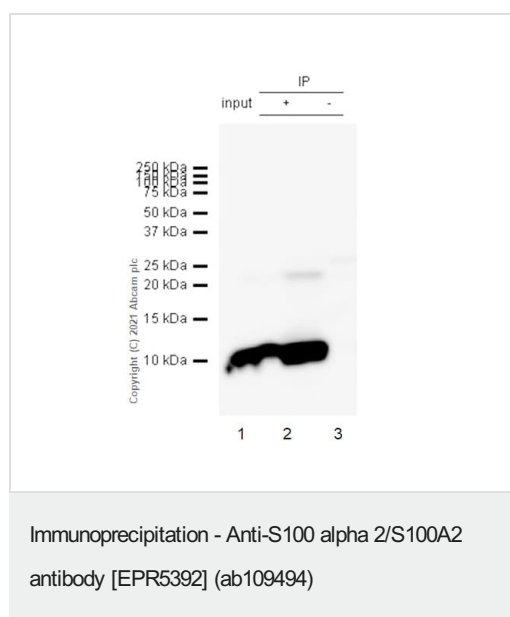
Secondary

All lanes : Goat Anti-Rabbit IgG H&L (HRP) ([ab97051](#)) at 1/20000 dilution

Predicted band size: 11 kDa

Observed band size: 11 kDa

Blocking and diluting buffer and concentration: 5% NFDM/TBST.



S100 alpha 2/S100A2 was immunoprecipitated from 0.35 mg HaCaT (Human skin keratinocyte) whole cell lysate 10 µg with 109494 at 1/20 dilution (1µg). VeriBlot for IP Detection Reagent (HRP)([ab131366](#)) was used at 1/5000 dilution.

Lane 1: HaCaT (Human skin keratinocyte) whole cell lysate 10 µg

Lane 2: ab109494 IP in HaCaT whole cell lysate

Lane 3: Rabbit monoclonal IgG ([ab172730](#)) instead of ab109494 in HaCaT whole cell lysate

Blocking and dilution buffer and concentration: 5% NFDM/TBST.

Why choose a recombinant antibody?



Research with confidence
Consistent and reproducible results



Long-term and scalable supply
Recombinant technology



Success from the first experiment
Confirmed specificity



Ethical standards compliant
Animal-free production

Anti-S100 alpha 2/S100A2 antibody [EPR5392]
(ab109494)

Please note: All products are "FOR RESEARCH USE ONLY. NOT FOR USE IN DIAGNOSTIC PROCEDURES"

Our Abpromise to you: Quality guaranteed and expert technical support

- Replacement or refund for products not performing as stated on the datasheet
- Valid for 12 months from date of delivery
- Response to your inquiry within 24 hours
- We provide support in Chinese, English, French, German, Japanese and Spanish
- Extensive multi-media technical resources to help you
- We investigate all quality concerns to ensure our products perform to the highest standards

If the product does not perform as described on this datasheet, we will offer a refund or replacement. For full details of the Abpromise, please visit <https://www.abcam.com/abpromise> or contact our technical team.

Terms and conditions

- Guarantee only valid for products bought direct from Abcam or one of our authorized distributors