


## Product datasheet

# Anti-S100 antibody ab34686

★★★★★ [4 Abreviews](#) [7 References](#) [4 Images](#)

### Overview

---

<b>Product name</b>	Anti-S100 antibody
<b>Description</b>	Rabbit polyclonal to S100
<b>Host species</b>	Rabbit
<b>Tested applications</b>	<b>Suitable for:</b> WB, IHC-P
<b>Species reactivity</b>	<b>Reacts with:</b> Mouse, Rat, Cow, Human <b>Predicted to work with:</b> Dog, Non human primates, Mammals 
<b>Immunogen</b>	Full length native protein (purified): MGSELETAME TLINVFHAHS GKEGDYKLS KKEKELLQT ELSGFLDAQK DADAVDKVMK ELDENG DGEV DFQEYVVLVA ALTVACNNFF WENS, corresponding to amino acids 1-94 of Cow S100 (alpha chain). A mixture of alpha alpha homodimers and alpha beta heterodimers was used. <a href="#">Run BLAST with Expasy</a> <a href="#">Run BLAST with NCBI</a>
<b>General notes</b>	Please note that lot 296545 is supplied at 0.5mg/ml. <p>The Life Science industry has been in the grips of a reproducibility crisis for a number of years. Abcam is leading the way in addressing this with our range of recombinant monoclonal antibodies and knockout edited cell lines for gold-standard validation. Please check that this product meets your needs before purchasing.</p> <p>If you have any questions, special requirements or concerns, please send us an inquiry and/or contact our Support team ahead of purchase. Recommended alternatives for this product can be found below, along with publications, customer reviews and Q&amp;As</p>

### Properties

---

<b>Form</b>	Liquid
<b>Storage instructions</b>	Shipped at 4°C. Store at +4°C short term (1-2 weeks). Upon delivery aliquot. Store at -20°C or -80°C. Avoid freeze / thaw cycle.
<b>Storage buffer</b>	Preservative: 0.01% Sodium azide Constituents: 0.42% Potassium phosphate, 0.87% Sodium chloride
<b>Purity</b>	Protein A purified
<b>Purification notes</b>	This antibody was purified from monospecific antiserum.
<b>Clonality</b>	Polyclonal
<b>Isotype</b>	IgG

## Applications

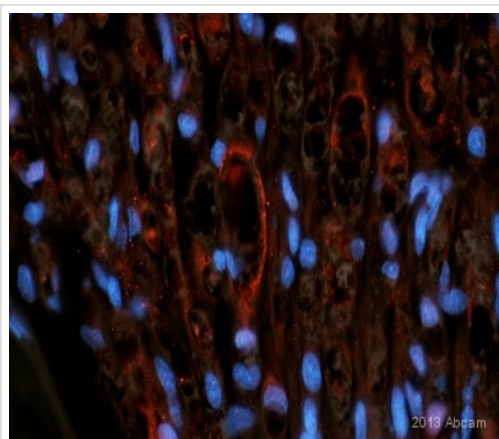
**The Abpromise guarantee** Our **Abpromise guarantee** covers the use of ab34686 in the following tested applications. The application notes include recommended starting dilutions; optimal dilutions/concentrations should be determined by the end user.

Application	Abreviews	Notes
WB		Use a concentration of 1.67 - 10 µg/ml. Detects a band of approximately 11 kDa.
IHC-P	★★★★★ (4)	Use a concentration of 2.5 - 25 µg/ml.

## Target

<b>Function</b>	Weakly binds calcium but binds zinc very tightly-distinct binding sites with different affinities exist for both ions on each monomer. Physiological concentrations of potassium ion antagonize the binding of both divalent cations, especially affecting high-affinity calcium-binding sites.
<b>Tissue specificity</b>	Highly prevalent in heart. Also found in lesser quantities in skeletal muscle and brain.
<b>Sequence similarities</b>	Belongs to the S-100 family. Contains 2 EF-hand domains.
<b>Cellular localization</b>	Cytoplasm.

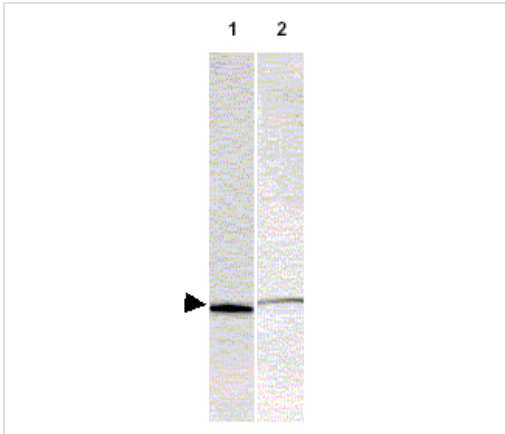
## Images



Immunohistochemistry (Formalin/PFA-fixed paraffin-embedded sections) - Anti-S100 antibody (ab34686)

This image is courtesy of an anonymous Abreview

ab34686 staining S100 in Rat nerve tissue sections by Immunohistochemistry (IHC-P - paraformaldehyde-fixed, paraffin-embedded sections). Tissue was fixed with formaldehyde and blocked with 10% serum for 30 minutes at 25°C; antigen retrieval was by heat mediation in a 10mM citrate buffer, pH 6.0. Samples were incubated with primary antibody (1/250 in PBS + 1x casein) for 1 hour at 25°C. A Biotin-conjugated Goat anti-rabbit IgG polyclonal (1/200) was used as the secondary antibody.



Western blot - Anti-S100 antibody (ab34686)

**All lanes :** Anti-S100 antibody (ab34686) at 1/1000 dilution

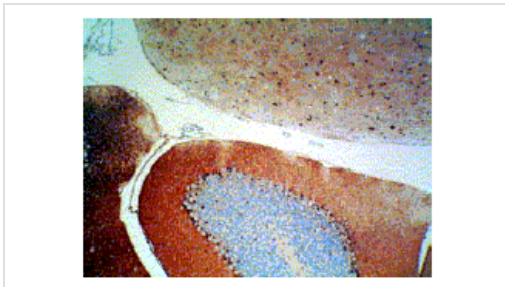
**Lane 1 :** Bovine S100 monomer at 0.1 µg

**Lane 2 :** S100 from rat brain lysate at 35 µg

**Secondary**

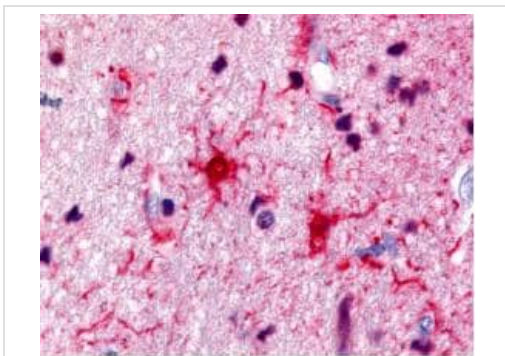
**All lanes :** IRDye 800 conjugated Gt-a-Rabbit IgG [H&L] MX

**Observed band size:** 11 kDa



Immunohistochemistry (Formalin/PFA-fixed paraffin-embedded sections) - Anti-S100 antibody (ab34686)

Ab34686, at a 1/500 dilution, staining S100 in mouse brain tissue by immunohistochemistry. The tissue was formalin fixed and embedded in paraffin. Dark nuclear staining is observed within basket cells located near the Purkinje cells in the cerebellum.



Immunohistochemistry (Formalin/PFA-fixed paraffin-embedded sections) - Anti-S100 antibody (ab34686)

Ab34686, at 1/500 dilution, staining S100 in formalin fixed and paraffin embedded human brain astrocyte tumor tissue by immunohistochemistry.

**Please note:** All products are "FOR RESEARCH USE ONLY. NOT FOR USE IN DIAGNOSTIC PROCEDURES"

**Our Abpromise to you: Quality guaranteed and expert technical support**

- Replacement or refund for products not performing as stated on the datasheet
- Valid for 12 months from date of delivery
- Response to your inquiry within 24 hours
  
- We provide support in Chinese, English, French, German, Japanese and Spanish
- Extensive multi-media technical resources to help you
- We investigate all quality concerns to ensure our products perform to the highest standards

If the product does not perform as described on this datasheet, we will offer a refund or replacement. For full details of the Abpromise, please visit <https://www.abcam.com/abpromise> or contact our technical team.

### **Terms and conditions**

---

- Guarantee only valid for products bought direct from Abcam or one of our authorized distributors