


## Product datasheet

### Anti-S100A9 + Calprotectin (S100A8/A9 complex) antibody [MAC387] $\alpha$ b22506

★★★★★ [22 Abreviews](#) [82 References](#) [2 Images](#)

#### Overview

<b>Product name</b>	Anti-S100A9 + Calprotectin (S100A8/A9 complex) antibody [MAC387]
<b>Description</b>	Mouse monoclonal [MAC387] to S100A9 + Calprotectin (S100A8/A9 complex)
<b>Host species</b>	Mouse
<b>Tested applications</b>	<b>Suitable for:</b> IHC-P
<b>Species reactivity</b>	<b>Reacts with:</b> Human <b>Predicted to work with:</b> Rabbit, Horse, Guinea pig, Cow, Cat, Dog, Pig, Monkey, Baboon  <b>Does not react with:</b> Rat
<b>Immunogen</b>	Tissue, cells or virus corresponding to Human S100A9 + Calprotectin (S100A8/A9 complex). Affinity purified solubilized human monocyte preparation.
<b>Positive control</b>	IHC-P: Human Hodgkin's lymphoma tissue.
<b>General notes</b>	<p>This antibody clone is manufactured by Abcam. If you require a custom buffer formulation or conjugation for your experiments, please contact <a href="mailto:orders@abcam.com">orders@abcam.com</a>.</p> <p>The Life Science industry has been in the grips of a reproducibility crisis for a number of years. Abcam is leading the way in addressing this with our range of recombinant monoclonal antibodies and knockout edited cell lines for gold-standard validation. Please check that this product meets your needs before purchasing.</p> <p>If you have any questions, special requirements or concerns, please send us an inquiry and/or contact our Support team ahead of purchase. Recommended alternatives for this product can be found below, along with publications, customer reviews and Q&amp;As</p>

#### Properties

<b>Form</b>	Liquid
<b>Storage instructions</b>	Shipped at 4°C. Store at +4°C short term (1-2 weeks). Upon delivery aliquot. Store at -20°C or -80°C. Avoid freeze / thaw cycle.
<b>Storage buffer</b>	pH: 7.40 Preservative: 0.02% Sodium azide Constituent: PBS
<b>Purity</b>	Protein G purified

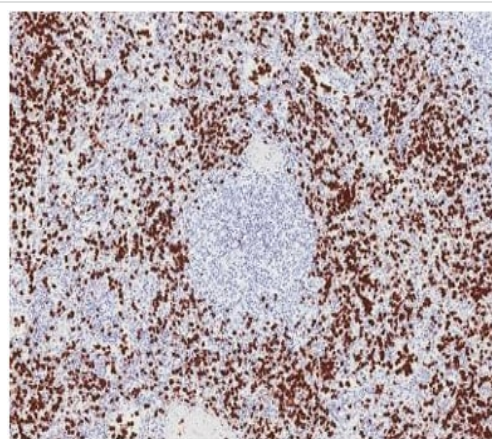
<b>Clonality</b>	Monoclonal
<b>Clone number</b>	MAC387
<b>Myeloma</b>	NS1
<b>Isotype</b>	IgG1

## Applications

**The Abpromise guarantee** Our **Abpromise guarantee** covers the use of ab22506 in the following tested applications. The application notes include recommended starting dilutions; optimal dilutions/concentrations should be determined by the end user.

Application	Abreviews	Notes
IHC-P	★★★★★ (18)	Use a concentration of 1 µg/ml.

## Images

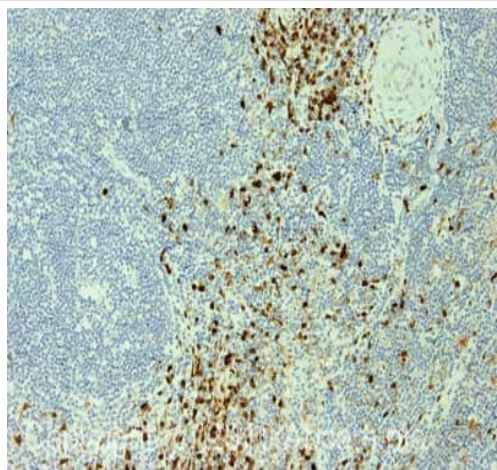


2011 Abcam

Immunohistochemistry (Formalin/PFA-fixed paraffin-embedded sections) - Anti-S100A9 + Calprotectin (S100A8/A9 complex) antibody [MAC387] (ab22506)

This image is courtesy of an Abreview submitted by Elizabeth Chlipala

ab22506 staining Macrophages in human spleen tissue sections by Immunohistochemistry (IHC-P - paraformaldehyde-fixed, paraffin-embedded sections). Tissue was fixed with 10% NBF and blocked with 0.250% casein for 5 minutes at 25°C; antigen retrieval was by proteinase K. Samples were incubated with primary antibody (1/5000 in Tris-HCL) for 30 minutes at 25°C. A HRP-conjugated labeled polymer was used as the secondary antibody.



IHC image of Macrophage staining in human Hodgkins lymphoma formalin fixed paraffin embedded tissue section, performed on a Leica Bond™ system using the standard protocol F. The section was pre-treated using heat mediated antigen retrieval with sodium citrate buffer (pH6, epitope retrieval solution 1) for 20 mins. The section was then incubated with ab22506, 1µg/ml, for 15 mins at room temperature and detected using an HRP conjugated compact polymer system. DAB was used as the chromogen. The section was then counterstained with haematoxylin and mounted with DPX.

Immunohistochemistry (Formalin/PFA-fixed paraffin-embedded sections) - Anti-S100A9 + Calprotectin (S100A8/A9 complex) antibody [MAC387] (ab22506)

**Please note:** All products are "FOR RESEARCH USE ONLY. NOT FOR USE IN DIAGNOSTIC PROCEDURES"

### Our Abpromise to you: Quality guaranteed and expert technical support

---

- Replacement or refund for products not performing as stated on the datasheet
- Valid for 12 months from date of delivery
- Response to your inquiry within 24 hours
- We provide support in Chinese, English, French, German, Japanese and Spanish
- Extensive multi-media technical resources to help you
- We investigate all quality concerns to ensure our products perform to the highest standards

If the product does not perform as described on this datasheet, we will offer a refund or replacement. For full details of the Abpromise, please visit <https://www.abcam.com/abpromise> or contact our technical team.

### Terms and conditions

---

- Guarantee only valid for products bought direct from Abcam or one of our authorized distributors