

## Product datasheet

# Anti-S100A9 antibody [EPR3556] ab92468

Recombinant RabMAb

[1 Abreviews](#) [5 References](#) [2 Images](#)

### Overview

<b>Product name</b>	Anti-S100A9 antibody [EPR3556]
<b>Description</b>	Rabbit monoclonal [EPR3556] to S100A9
<b>Host species</b>	Rabbit
<b>Tested applications</b>	<b>Suitable for:</b> IHC-P <b>Unsuitable for:</b> ICC/IF,IP or WB
<b>Species reactivity</b>	<b>Reacts with:</b> Human
<b>Immunogen</b>	Synthetic peptide. This information is proprietary to Abcam and/or its suppliers.
<b>Positive control</b>	WB: Human tonsil lysate and peripheral blood leukocyte cell lysate IHC-P: Human spleen tissue
<b>General notes</b>	<p>This product is a recombinant monoclonal antibody, which offers several advantages including:</p> <ul style="list-style-type: none"><li>- High batch-to-batch consistency and reproducibility</li><li>- Improved sensitivity and specificity</li><li>- Long-term security of supply</li><li>- Animal-free production</li></ul> <p>For more information <a href="#">see here</a>.</p> <p>Our RabMAb<sup>®</sup> technology is a patented hybridoma-based technology for making rabbit monoclonal antibodies. For details on our patents, please refer to <a href="#">RabMAb<sup>®</sup> patents</a>.</p> <p>Mouse, Rat: We have preliminary internal testing data to indicate this antibody may not react with these species. Please contact us for more information.</p>

### Properties

<b>Form</b>	Liquid
<b>Storage instructions</b>	Shipped at 4°C. Store at -20°C. Stable for 12 months at -20°C.
<b>Storage buffer</b>	pH: 7.20 Preservative: 0.01% Sodium azide Constituents: 9% PBS, 40% Glycerol (glycerin, glycerine), 0.05% BSA, 50% Tissue culture supernatant
<b>Purity</b>	Tissue culture supernatant
<b>Clonality</b>	Monoclonal

**Clone number**                      EPR3556  
**Isotype**                                IgG

## Applications

---

**The Abpromise guarantee**        Our **Abpromise guarantee** covers the use of ab92468 in the following tested applications. The application notes include recommended starting dilutions; optimal dilutions/concentrations should be determined by the end user.

Application	Abreviews	Notes
IHC-P		

**Application notes**                      IHC-P: 1/100 - 1/250. Perform heat mediated antigen retrieval before commencing with IHC staining protocol.  
WB: 1/1000 - 1/10,000. Predicted molecular weight: 13 kDa.  
  
Is unsuitable for ICC/IF or IP.  
  
Not yet tested in other applications.  
Optimal dilutions/concentrations should be determined by the end user.

## Target

---

**Function**                                      Calcium-binding protein. Has antimicrobial activity towards bacteria and fungi. Important for resistance to invasion by pathogenic bacteria. Up-regulates transcription of genes that are under the control of NF-kappa-B. Plays a role in the development of endotoxic shock in response to bacterial lipopolysaccharide (LPS) (By similarity). Promotes tubulin polymerization when unphosphorylated. Promotes phagocyte migration and infiltration of granulocytes at sites of wounding. Plays a role as a pro-inflammatory mediator in acute and chronic inflammation and up-regulates the release of IL8 and cell-surface expression of ICAM1. Extracellular calprotectin binds to target cells and promotes apoptosis. Antimicrobial and proapoptotic activity is inhibited by zinc ions.

**Tissue specificity**                      Expressed by macrophages in acutely inflamed tissues and in chronic inflammation. Detected in peripheral blood leukocytes, in neutrophils and granulocytes. Detected at sites of vascular inflammation (at protein level). Also expressed in epithelial cells constitutively or induced during dermatoses.

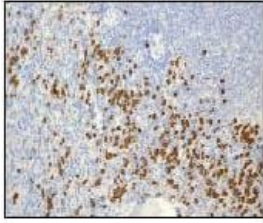
**Sequence similarities**                      Belongs to the S-100 family.  
Contains 2 EF-hand domains.

**Post-translational modifications**        Phosphorylated. Phosphorylation inhibits activation of tubulin polymerization.

**Cellular localization**                      Secreted. Cytoplasm. Cytoplasm > cytoskeleton. Cell membrane. Associates with tubulin filaments in activated monocytes. Targeted to the cell surface upon calcium influx. Released from blood leukocytes upon exposure to CSF2/GM-CSF, bacterial lipopolysaccharide (LPS) and during inflammatory processes. Serum levels are high in patients suffering from chronic inflammation.

## Images

---



Immunohistochemistry (Formalin/PFA-fixed paraffin-embedded sections) - Anti-S100A9 antibody [EPR3556] (ab92468)

ab92468, at a 1/100 dilution, staining S100A9 in paraffin embedded Human spleen tissue by Immunohistochemistry.

Heat mediated antigen retrieval was performed before commencing with IHC staining protocol.

### Why choose a recombinant antibody?



Anti-S100A9 antibody [EPR3556] (ab92468)

**Please note:** All products are "FOR RESEARCH USE ONLY. NOT FOR USE IN DIAGNOSTIC PROCEDURES"

### Our Abpromise to you: Quality guaranteed and expert technical support

- Replacement or refund for products not performing as stated on the datasheet
- Valid for 12 months from date of delivery
- Response to your inquiry within 24 hours
- We provide support in Chinese, English, French, German, Japanese and Spanish
- Extensive multi-media technical resources to help you
- We investigate all quality concerns to ensure our products perform to the highest standards

If the product does not perform as described on this datasheet, we will offer a refund or replacement. For full details of the Abpromise, please visit <https://www.abcam.com/abpromise> or contact our technical team.

### Terms and conditions

- Guarantee only valid for products bought direct from Abcam or one of our authorized distributors