

Product datasheet

Anti-S100P antibody [EPR6142] ab124743

KO VALIDATED Recombinant RabMAb

3 References 13 Images

Overview

Product name	Anti-S100P antibody [EPR6142]
Description	Rabbit monoclonal [EPR6142] to S100P
Host species	Rabbit
Tested applications	Suitable for: Flow Cyt (Intra), WB, IHC-P, ICC/IF
Species reactivity	Reacts with: Human
Immunogen	Synthetic peptide within Human S100P aa 1-100. The exact sequence is proprietary.
Positive control	BxPC3 cell lysate; Human pancreatic adenocarcinoma, placenta and spleen tissues. WB: HeLa cells.
General notes	<p>This product is a recombinant monoclonal antibody, which offers several advantages including:</p> <ul style="list-style-type: none"> - High batch-to-batch consistency and reproducibility - Improved sensitivity and specificity - Long-term security of supply - Animal-free production <p>For more information see here.</p> <p>Our RabMAb[®] technology is a patented hybridoma-based technology for making rabbit monoclonal antibodies. For details on our patents, please refer to RabMAb[®] patents.</p> <p>Mouse, Rat: We have preliminary internal testing data to indicate this antibody may not react with these species. Please contact us for more information.</p>

Properties

Form	Liquid
Storage instructions	Shipped at 4°C. Store at -20°C. Stable for 12 months at -20°C.
Storage buffer	<p>pH: 7.2</p> <p>Preservative: 0.01% Sodium azide</p> <p>Constituents: 40% Glycerol (glycerin, glycerine), 0.05% BSA, 59% PBS</p>
Purity	Protein A purified
Clonality	Monoclonal
Clone number	EPR6142

Isotype

IgG

Applications

The Abpromise guarantee

Our **Abpromise guarantee** covers the use of ab124743 in the following tested applications.

The application notes include recommended starting dilutions; optimal dilutions/concentrations should be determined by the end user.

Application	Abreviews	Notes
Flow Cyt (Intra)		Use a concentration of 1 µg/ml.
WB		1/1000. Detects a band of approximately 10 kDa (predicted molecular weight: 10 kDa).
IHC-P		1/150 - 1/300. Perform heat mediated antigen retrieval before commencing with IHC staining protocol. See <u>IHC antigen retrieval protocols</u> .
ICC/IF		1/150.

Target

Tissue specificity

Up-regulated in various pancreatic ductal adenocarcinomas and pancreatic intraepithelial neoplasias.

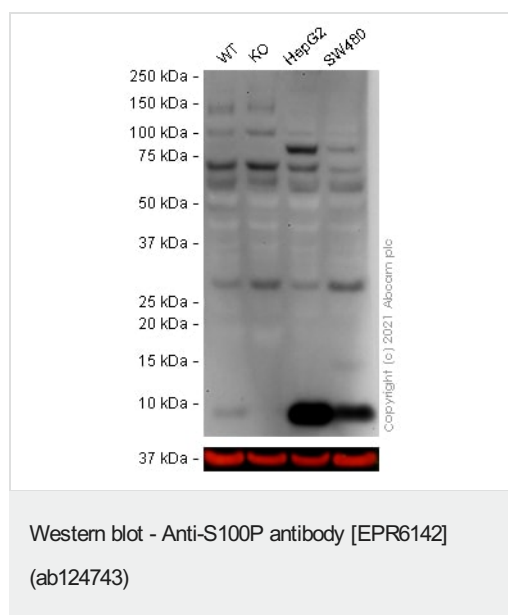
Sequence similarities

Belongs to the S-100 family.
Contains 2 EF-hand domains.

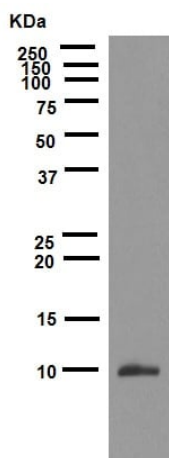
Cellular localization

Nucleus. Cytoplasm. Colocalizes with S100PBP in the nucleus.

Images



ab124743 was shown to react with S100P in wild-type HeLa cells in western blot. Loss of signal was observed when S100P knockout sample was used. Membranes were blocked in fluorescent western blot (TBS-based) blocking solution before incubation with ab124743 overnight at 4 °C at a 1 in 1000 dilution. Blots were incubated with HRP conjugated Goat anti-Rabbit (H+L) secondary antibody at 1/5000 for 1 hour at room temperature before development with Optiblot ECL reagent (**ab133456**) and imaging.



Western blot - Anti-S100P antibody [EPR6142]
(ab124743)

Anti-S100P antibody [EPR6142] (ab124743) at 1/1000 dilution
(purified) + BxPC-3 cell lysate at 10 µg

Secondary

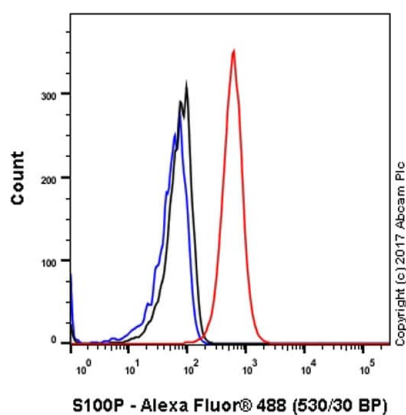
HRP goat anti-rabbit (H+L) at 1/1000 dilution

Predicted band size: 10 kDa

Observed band size: 10 kDa

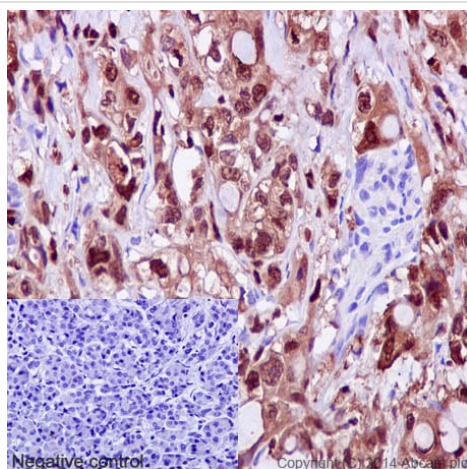
Blocking buffer: 5% NFDM/TBST

Dilution buffer: 5% NFDM/TBST



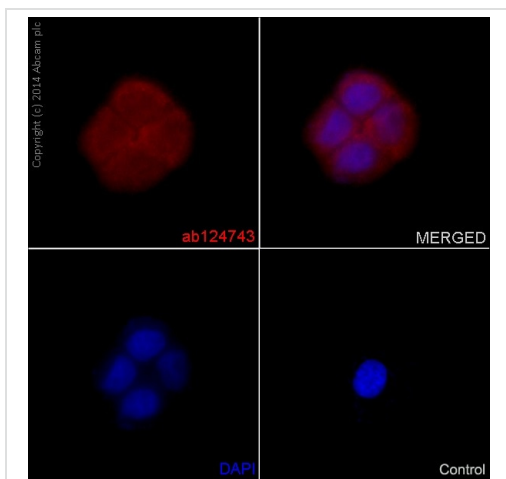
Flow Cytometry (Intracellular) - Anti-S100P antibody
[EPR6142] (ab124743)

Intracellular Flow Cytometry analysis of BxPC-3 (human Pancreas adenocarcinoma) cells labeling S100P with purified ab124743 at 1/1700 dilution (1 µg/ml) (red). Cells were fixed with 4% paraformaldehyde and permeabilised with 90% methanol. A Goat anti rabbit IgG (Alexa Fluor® 488) (1/2000 dilution) was used as the secondary antibody. Rabbit monoclonal IgG (Black) was used as the isotype control, cells without incubation with primary antibody and secondary antibody (Blue) were used as the unlabeled control.



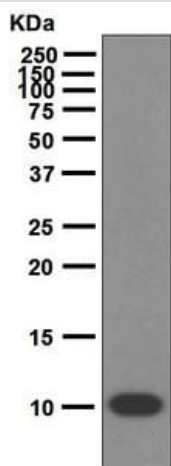
Immunohistochemistry (Formalin/PFA-fixed paraffin-
embedded sections) - Anti-S100P antibody
[EPR6142] (ab124743)

Immunohistochemical staining of paraffin embedded human pancreatic adenocarcinoma with purified ab124743 at a working dilution of 1 in 300. The secondary antibody used is a HRP polymer for rabbit IgG. The sample is counter-stained with hematoxylin. Antigen retrieval was performed using Tris-EDTA buffer, pH 9.0. PBS was used instead of the primary antibody as the negative control, and is shown in the inset.



Immunocytochemistry/ Immunofluorescence - Anti-S100P antibody [EPR6142] (ab124743)

Immunofluorescence staining of BxPC-3 cells with purified ab124743 at a working dilution of 1 in 150, counter-stained with DAPI. The secondary antibody was Alexa Fluor® 555 goat anti-rabbit, used at a dilution of 1 in 500. The cells were fixed in 4% PFA. The negative control is shown in bottom right hand panel - for the negative control, purified ab124743 was used at a dilution of 1/200 followed by an Alexa Fluor® 555 goat anti-mouse antibody at a dilution of 1/500.



Western blot - Anti-S100P antibody [EPR6142] (ab124743)

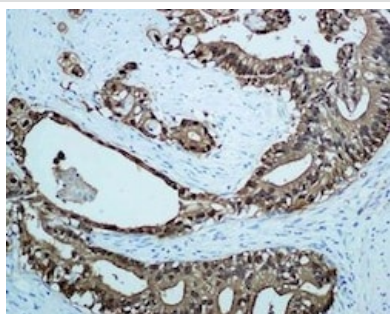
Anti-S100P antibody [EPR6142] (ab124743) at 1/1000 dilution (unpurified) + BxPC3 cell lysate at 10 µg

Secondary

Goat anti-Rabbit HRP at 1/2000 dilution

Predicted band size: 10 kDa

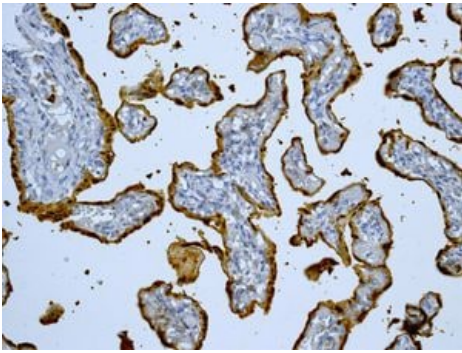
Observed band size: 10 kDa



Immunohistochemistry (Formalin/PFA-fixed paraffin-embedded sections) - Anti-S100P antibody [EPR6142] (ab124743)

Unpurified ab124743, at 1/500 dilution, staining S100P in paraffin-embedded human pancreatic adenocarcinoma tissue by immunohistochemistry.

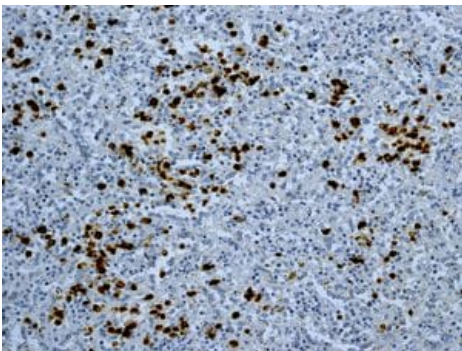
Perform heat mediated antigen retrieval before commencing with IHC staining protocol.



Immunohistochemistry (Formalin/PFA-fixed paraffin-embedded sections) - Anti-S100P antibody [EPR6142] (ab124743)

Unpurified ab124743, at 1/500 dilution, staining S100P in paraffin-embedded human placenta tissue by immunohistochemistry.

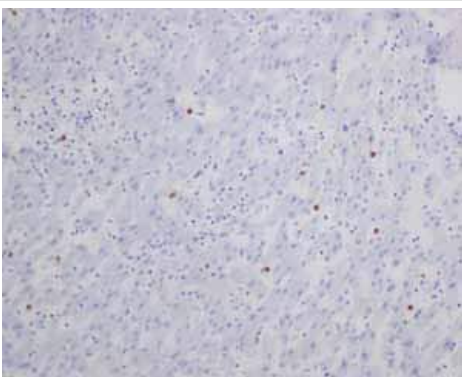
Perform heat mediated antigen retrieval before commencing with IHC staining protocol.



Immunohistochemistry (Formalin/PFA-fixed paraffin-embedded sections) - Anti-S100P antibody [EPR6142] (ab124743)

Unpurified ab124743, at 1/500 dilution, staining S100P in paraffin-embedded human spleen tissue by immunohistochemistry.

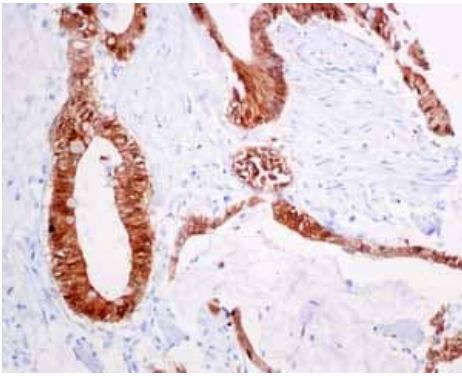
Perform heat mediated antigen retrieval before commencing with IHC staining protocol.



Immunohistochemistry (Formalin/PFA-fixed paraffin-embedded sections) - Anti-S100P antibody [EPR6142] (ab124743)

Unpurified ab124743 showing negative staining in normal liver tissue.

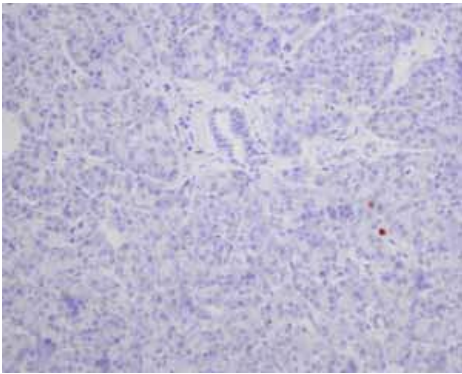
Perform heat mediated antigen retrieval before commencing with IHC staining protocol.



Unpurified ab124743 showing positive staining in colonic adenocarcinoma tissue.

Perform heat mediated antigen retrieval before commencing with IHC staining protocol.

Immunohistochemistry (Formalin/PFA-fixed paraffin-embedded sections) - Anti-S100P antibody [EPR6142] (ab124743)



Unpurified ab124743 showing negative staining in normal pancreas tissue.

Perform heat mediated antigen retrieval before commencing with IHC staining protocol.

Immunohistochemistry (Formalin/PFA-fixed paraffin-embedded sections) - Anti-S100P antibody [EPR6142] (ab124743)

Why choose a recombinant antibody?



Anti-S100P antibody [EPR6142] (ab124743)

Please note: All products are "FOR RESEARCH USE ONLY. NOT FOR USE IN DIAGNOSTIC PROCEDURES"

Our Abpromise to you: Quality guaranteed and expert technical support

- Replacement or refund for products not performing as stated on the datasheet
- Valid for 12 months from date of delivery
- Response to your inquiry within 24 hours

- We provide support in Chinese, English, French, German, Japanese and Spanish
- Extensive multi-media technical resources to help you
- We investigate all quality concerns to ensure our products perform to the highest standards

If the product does not perform as described on this datasheet, we will offer a refund or replacement. For full details of the Abpromise, please visit <https://www.abcam.com/abpromise> or contact our technical team.

Terms and conditions

- Guarantee only valid for products bought direct from Abcam or one of our authorized distributors