




Product datasheet

Anti-S1P antibody - C-terminal ab224618

★★★★★ [3 Abreviews](#) [1 References](#) [2 Images](#)

Overview

Product name	Anti-S1P antibody - C-terminal
Description	Rabbit polyclonal to S1P - C-terminal
Host species	Rabbit
Tested applications	Suitable for: WB, IHC-P
Species reactivity	Reacts with: Mouse, Human Predicted to work with: Rat, Chinese hamster 
Immunogen	Recombinant fragment corresponding to Human S1P aa 800 to the C-terminus (C terminal). Database link: Q14703  Run BLAST with  Run BLAST with
Positive control	IHC-P: Human lung and small intestine tissues.
General notes	<p>The Life Science industry has been in the grips of a reproducibility crisis for a number of years. Abcam is leading the way in addressing this with our range of recombinant monoclonal antibodies and knockout edited cell lines for gold-standard validation. Please check that this product meets your needs before purchasing.</p> <p>If you have any questions, special requirements or concerns, please send us an inquiry and/or contact our Support team ahead of purchase. Recommended alternatives for this product can be found below, along with publications, customer reviews and Q&As</p>

Properties

Form	Liquid
Storage instructions	Shipped at 4°C. Store at +4°C short term (1-2 weeks). Upon delivery aliquot. Store at -20°C long term. Avoid freeze / thaw cycle.
Storage buffer	pH: 7.30 Preservative: 0.02% Sodium azide Constituents: 50% Glycerol (glycerin, glycerine), PBS
Purity	Immunogen affinity purified
Clonality	Polyclonal
Isotype	IgG

Applications

The Abpromise guarantee

Our **Abpromise guarantee** covers the use of ab224618 in the following tested applications.

The application notes include recommended starting dilutions; optimal dilutions/concentrations should be determined by the end user.

Application	Abreviews	Notes
WB	★★★★★ (1)	Use at an assay dependent concentration.
IHC-P		1/20 - 1/200.

Target

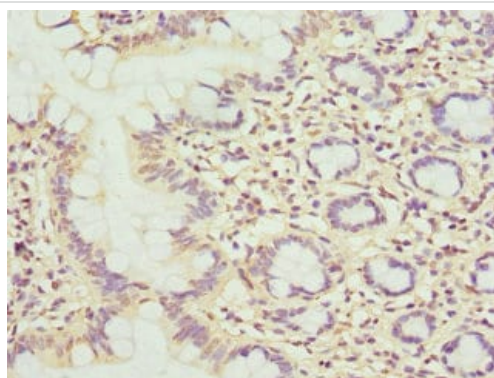
Relevance

S1P (also known as MBTPS1,SKI1), was first discovered as one of two enzymes that cleave the sterol regulatory binding proteins (SREBPs), in the case of S1P at “site-1,” a hydrophilic loop extending into the lumen of the ER. The MBTPS1 domain structure contains a signal sequence followed by a propeptide domain, a catalytic domain, a transmembrane domain and a cytoplasmic domain.

Cellular localization

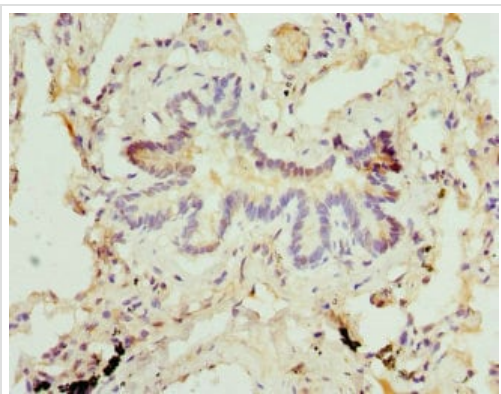
Endoplasmic reticulum membrane; Single-pass type I membrane protein. Golgi apparatus membrane; Single-pass type I membrane protein.

Images



Paraffin-embedded human small intestine tissue stained for S1P using ab224618 at 1/100 dilution in immunohistochemical analysis.

Immunohistochemistry (Formalin/PFA-fixed paraffin-embedded sections) - Anti-S1P antibody - C-terminal (ab224618)



Paraffin-embedded human lung tissue stained for S1P using ab224618 at 1/100 dilution in immunohistochemical analysis.

Immunohistochemistry (Formalin/PFA-fixed paraffin-embedded sections) - Anti-S1P antibody - C-terminal (ab224618)

Please note: All products are "FOR RESEARCH USE ONLY. NOT FOR USE IN DIAGNOSTIC PROCEDURES"

Our Abpromise to you: Quality guaranteed and expert technical support

- Replacement or refund for products not performing as stated on the datasheet
- Valid for 12 months from date of delivery
- Response to your inquiry within 24 hours
- We provide support in Chinese, English, French, German, Japanese and Spanish
- Extensive multi-media technical resources to help you
- We investigate all quality concerns to ensure our products perform to the highest standards

If the product does not perform as described on this datasheet, we will offer a refund or replacement. For full details of the Abpromise, please visit <https://www.abcam.com/abpromise> or contact our technical team.

Terms and conditions

- Guarantee only valid for products bought direct from Abcam or one of our authorized distributors