


## Product datasheet

### Anti-S2P antibody ab196797

★★★★☆ [4 Abreviews](#) [1 References](#) [1 Image](#)

#### Overview

<b>Product name</b>	Anti-S2P antibody
<b>Description</b>	Rabbit polyclonal to S2P
<b>Host species</b>	Rabbit
<b>Tested applications</b>	<b>Suitable for:</b> ICC/IF
<b>Species reactivity</b>	<b>Reacts with:</b> Human <b>Predicted to work with:</b> Mouse 
<b>Immunogen</b>	Synthetic peptide corresponding to Human S2P (internal sequence). Database link: <a href="#">O43462</a>
<b>Positive control</b>	A549 cells.
<b>General notes</b>	<p>The Life Science industry has been in the grips of a reproducibility crisis for a number of years. Abcam is leading the way in addressing this with our range of recombinant monoclonal antibodies and knockout edited cell lines for gold-standard validation. Please check that this product meets your needs before purchasing.</p> <p>If you have any questions, special requirements or concerns, please send us an inquiry and/or contact our Support team ahead of purchase. Recommended alternatives for this product can be found below, along with publications, customer reviews and Q&amp;As</p>

#### Properties

<b>Form</b>	Liquid
<b>Storage instructions</b>	Shipped at 4°C. Store at +4°C short term (1-2 weeks). Upon delivery aliquot. Store at -20°C long term. Avoid freeze / thaw cycle.
<b>Storage buffer</b>	pH: 7.40 Preservative: 0.02% Sodium azide Constituents: 50% Glycerol (glycerin, glycerine), 0.87% Sodium chloride, 49% PBS  PBS is without Mg <sup>2+</sup> and Ca <sup>2+</sup>
<b>Purity</b>	Immunogen affinity purified
<b>Clonality</b>	Polyclonal
<b>Isotype</b>	IgG

## Applications

### The Abpromise guarantee

Our **Abpromise guarantee** covers the use of ab196797 in the following tested applications.

The application notes include recommended starting dilutions; optimal dilutions/concentrations should be determined by the end user.

Application	Abreviews	Notes
ICC/IF	★★★★★ (3)	1/100 - 1/500.

## Target

### Function

Intramembrane proteolysis of sterol-regulatory element-binding proteins (SREBPs) within the first transmembrane segment thereby releasing the N-terminal segment with a portion of the transmembrane segment attached. Site-2 cleavage comes after site-1 cleavage which takes place in the luminal loop.

### Tissue specificity

Expressed in heart, brain, placenta, lung, liver, muscle, kidney and pancreas.

### Involvement in disease

Defects in MBTPS2 are the cause of ichthyosis follicularis-atrichia-photophobia syndrome (IFAPS) [MIM:308205]. A syndrome characterized by a peculiar triad of follicular ichthyosis, total or subtotal atrichia, and photophobia of varying degree. Histopathologically, the epidermal granular layer is generally well-preserved or thickened at the infundibulum. Hair follicles are poorly developed and tend to be surrounded by an inflammatory infiltrate. A subgroup of patients is described with lamellar rather than follicular ichthyosis. Non-consistent features may include growth and psychomotor retardation, aganglionic megacolon, seizures and nail dystrophy. Defects in MBTPS2 are a cause of keratosis follicularis spinulosa decalvans X-linked (KFSDX) [MIM:308800]. A rare disorder affecting the skin and the eye. Affected men show thickening of the skin of the neck, ears, and extremities, especially the palms and soles, loss of eyebrows, eyelashes and beard, thickening of the eyelids with blepharitis and ectropion, and corneal degeneration.

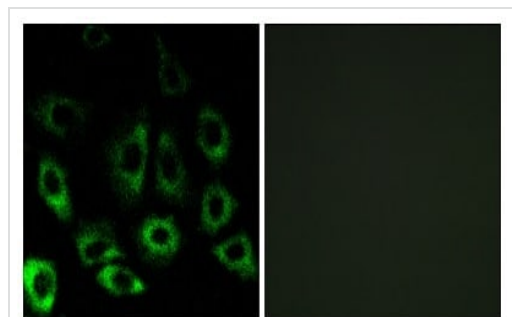
### Sequence similarities

Belongs to the peptidase M50A family.

### Cellular localization

Membrane. Cytoplasm.

## Images



Immunocytochemistry/ Immunofluorescence analysis of A549 cells labeling S2P with ab196797 at a 1/100 dilution. Right image treated with synthesized peptide.

Immunocytochemistry/ Immunofluorescence - Anti-S2P antibody (ab196797)

### **Our Abpromise to you: Quality guaranteed and expert technical support**

---

- Replacement or refund for products not performing as stated on the datasheet
- Valid for 12 months from date of delivery
- Response to your inquiry within 24 hours
  
- We provide support in Chinese, English, French, German, Japanese and Spanish
- Extensive multi-media technical resources to help you
- We investigate all quality concerns to ensure our products perform to the highest standards

If the product does not perform as described on this datasheet, we will offer a refund or replacement. For full details of the Abpromise, please visit <https://www.abcam.com/abpromise> or contact our technical team.

### **Terms and conditions**

---

- Guarantee only valid for products bought direct from Abcam or one of our authorized distributors