


## Product datasheet

### Anti-SAE2 / UBA2 antibody ab95835

1 Image

#### Overview

---

<b>Product name</b>	Anti-SAE2 / UBA2 antibody
<b>Description</b>	Rabbit polyclonal to SAE2 / UBA2
<b>Host species</b>	Rabbit
<b>Tested applications</b>	<b>Suitable for:</b> WB
<b>Species reactivity</b>	<b>Reacts with:</b> Human <b>Predicted to work with:</b> Mouse, Rat, Chicken, Cow, Dog, Zebrafish 
<b>Immunogen</b>	Synthetic peptide corresponding to Human SAE2/ UBA2 aa 150-250 conjugated to keyhole limpet haemocyanin. (Peptide available as <a href="#">ab109093</a> )
<b>Positive control</b>	This antibody gave a positive signal in both Human brain and Human heart tissue lysates as well as the following whole cell lysates: HeLa; Jurkat; HepG2; HEK293; Caco2.
<b>General notes</b>	<p>The Life Science industry has been in the grips of a reproducibility crisis for a number of years. Abcam is leading the way in addressing this with our range of recombinant monoclonal antibodies and knockout edited cell lines for gold-standard validation. Please check that this product meets your needs before purchasing.</p> <p>If you have any questions, special requirements or concerns, please send us an inquiry and/or contact our Support team ahead of purchase. Recommended alternatives for this product can be found below, along with publications, customer reviews and Q&amp;As</p>

#### Properties

---

<b>Form</b>	Liquid
<b>Storage instructions</b>	Shipped at 4°C. Store at +4°C short term (1-2 weeks). Upon delivery aliquot. Store at -20°C or -80°C. Avoid freeze / thaw cycle.
<b>Storage buffer</b>	pH: 7.40 Preservative: 0.02% Sodium azide Constituent: PBS

Batches of this product that have a concentration < 1mg/ml may have BSA added as a stabilising agent. If you would like information about the formulation of a specific lot, please contact our scientific support team who will be happy to help.

<b>Purity</b>	Immunogen affinity purified
<b>Clonality</b>	Polyclonal
<b>Isotype</b>	IgG

## Applications

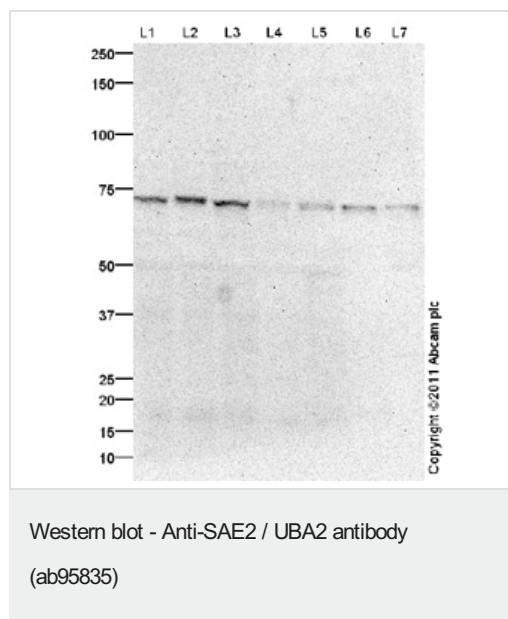
**The Abpromise guarantee** Our **Abpromise guarantee** covers the use of ab95835 in the following tested applications. The application notes include recommended starting dilutions; optimal dilutions/concentrations should be determined by the end user.

Application	Abreviews	Notes
WB		Use a concentration of 1 µg/ml. Detects a band of approximately 71 kDa (predicted molecular weight: 71 kDa).

## Target

<b>Function</b>	The heterodimer acts as a E1 ligase for SUMO1, SUMO2, SUMO3, and probably SUMO4. It mediates ATP-dependent activation of SUMO proteins followed by formation of a thioester bond between a SUMO protein and a conserved active site cysteine residue on UBA2/SAE2.
<b>Pathway</b>	Protein modification; protein sumoylation.
<b>Sequence similarities</b>	Belongs to the ubiquitin-activating E1 family.
<b>Cellular localization</b>	Nucleus.

## Images



**All lanes :** Anti-SAE2 / UBA2 antibody (ab95835) at 1 µg/ml

**Lane 1 :** HeLa (Human epithelial carcinoma cell line) Whole Cell Lysate

**Lane 2 :** Jurkat (Human T cell lymphoblast-like cell line) Whole Cell Lysate

**Lane 3 :** HEK293 (Human embryonic kidney cell line) Whole Cell Lysate

**Lane 4 :** HepG2 (Human hepatocellular liver carcinoma cell line) Whole Cell Lysate

**Lane 5 :** Caco 2 (Human colonic carcinoma cell line) Whole Cell Lysate

**Lane 6 :** Human brain tissue lysate - total protein ([ab29466](#))

**Lane 7 :** Human heart tissue lysate - total protein ([ab29431](#))

Lysates/proteins at 10 µg per lane.

## Secondary

**All lanes :** Goat Anti-Rabbit IgG H&L (HRP) preadsorbed  
(**ab97080**) at 1/5000 dilution

Developed using the ECL technique.

Performed under reducing conditions.

**Predicted band size:** 71 kDa

**Observed band size:** 71 kDa

**Exposure time:** 20 minutes

Abcam recommends using milk as the blocking agent at a concentration of 3%. Abcam welcomes customer feedback and would appreciate any comments regarding this product and the data presented above.

**Please note:** All products are "FOR RESEARCH USE ONLY. NOT FOR USE IN DIAGNOSTIC PROCEDURES"

### **Our Abpromise to you: Quality guaranteed and expert technical support**

---

- Replacement or refund for products not performing as stated on the datasheet
- Valid for 12 months from date of delivery
- Response to your inquiry within 24 hours
- We provide support in Chinese, English, French, German, Japanese and Spanish
- Extensive multi-media technical resources to help you
- We investigate all quality concerns to ensure our products perform to the highest standards

If the product does not perform as described on this datasheet, we will offer a refund or replacement. For full details of the Abpromise, please visit <https://www.abcam.com/abpromise> or contact our technical team.

### **Terms and conditions**

---

- Guarantee only valid for products bought direct from Abcam or one of our authorized distributors