

## Product datasheet

# Anti-Salivary alpha amylase antibody [EPR19605] ab201450

Recombinant RabMAb

[1 References](#) [7 Images](#)

### Overview

---

<b>Product name</b>	Anti-Salivary alpha amylase antibody [EPR19605]
<b>Description</b>	Rabbit monoclonal [EPR19605] to Salivary alpha amylase
<b>Host species</b>	Rabbit
<b>Specificity</b>	This product reacts with Salivary alpha amylase (P04745), Pancreatic alpha amylase (P04746) and Carcinoid alpha amylase (P19961) due to high sequence homology.
<b>Tested applications</b>	<b>Suitable for:</b> IHC-P, WB
<b>Species reactivity</b>	<b>Reacts with:</b> Human
<b>Immunogen</b>	Recombinant fragment. This information is proprietary to Abcam and/or its suppliers.
<b>Positive control</b>	WB: Human salivary alpha-amylase fragment recombinant protein; human pancreatic alpha-amylase fragment recombinant protein; human alpha-carcinoid alpha-amylase fragment recombinant protein; human parotid gland and pancreas lysates. IHC-P: Human parotid gland and pancreas tissues
<b>General notes</b>	<p>This product is a recombinant monoclonal antibody, which offers several advantages including:</p> <ul style="list-style-type: none"><li>- High batch-to-batch consistency and reproducibility</li><li>- Improved sensitivity and specificity</li><li>- Long-term security of supply</li><li>- Animal-free production</li></ul> <p>For more information <a href="#">see here</a>.</p> <p>Our RabMAb<sup>®</sup> technology is a patented hybridoma-based technology for making rabbit monoclonal antibodies. For details on our patents, please refer to <a href="#">RabMAb<sup>®</sup> patents</a>.</p>

### Properties

---

<b>Form</b>	Liquid
<b>Storage instructions</b>	Shipped at 4°C. Store at +4°C short term (1-2 weeks). Upon delivery aliquot. Store at -20°C long term. Avoid freeze / thaw cycle.
<b>Storage buffer</b>	pH: 7.2 Preservative: 0.01% Sodium azide Constituents: 59% PBS, 40% Glycerol (glycerin, glycerine), 0.05% BSA

<b>Purity</b>	Protein A purified
<b>Clonality</b>	Monoclonal
<b>Clone number</b>	EPR19605
<b>Isotype</b>	IgG

## Applications

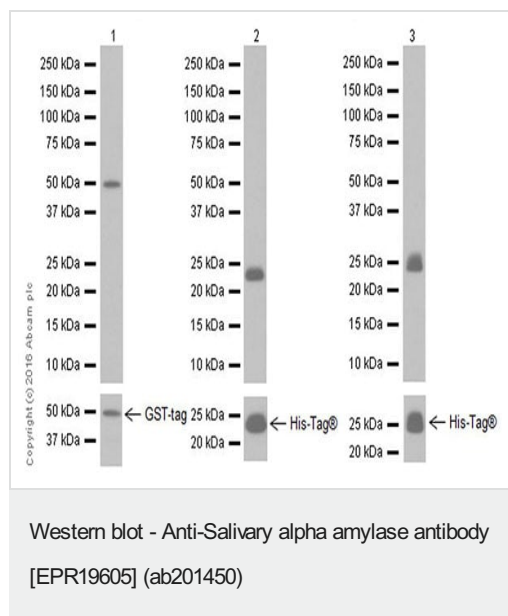
**The Abpromise guarantee** Our **Abpromise guarantee** covers the use of ab201450 in the following tested applications. The application notes include recommended starting dilutions; optimal dilutions/concentrations should be determined by the end user.

Application	Abreviews	Notes
<b>IHC-P</b>		1/2000. Perform heat mediated antigen retrieval with Tris/EDTA buffer pH 9.0 before commencing with IHC staining protocol.
<b>WB</b>		1/5000. Detects a band of approximately 57 kDa (predicted molecular weight: 58 kDa).

## Target

**Sequence similarities** Belongs to the glycosyl hydrolase 13 family.  
**Cellular localization** Secreted.

## Images



**All lanes** : Anti-Salivary alpha amylase antibody [EPR19605] (ab201450) at 1/10000 dilution

**Lane 1** : Human salivary alpha-amylase fragment recombinant protein

**Lane 2** : Human pancreatic alpha-amylase fragment recombinant protein

**Lane 3** : Human alpha-carcinoid alpha-amylase fragment recombinant protein

Lysates/proteins at 0.01 µg per lane.

### Secondary

**All lanes** : Goat Anti-Rabbit IgG H&L (HRP) (**ab97051**) at 1/100000 dilution

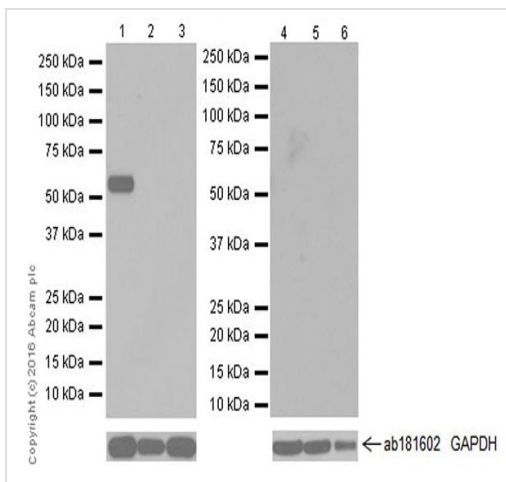
**Predicted band size:** 58 kDa

**Observed band size:** 22,22,50 kDa

**Exposure time:** 15 seconds

Blocking/Dilution buffer: 5% NFDm/TBST.

Human salivary alpha-amylase contains aa311-511 with a GST-tag. Human pancreatic alpha-amylase and alpha-carcinoid alpha-amylase fragment recombinant proteins contain aa311-511 with a His-Tag<sup>®</sup>. These three recombinant proteins were made in-house.



Western blot - Anti-Salivary alpha amylase antibody [EPR19605] (ab201450)

**Lanes 1-3 :** Anti-Salivary alpha amylase antibody [EPR19605] (ab201450) at 1/20000 dilution

**Lanes 4-6 :** Anti-Salivary alpha amylase antibody [EPR19605] (ab201450) at 1/1000 dilution

**Lane 1 :** Human parotid gland lysate

**Lane 2 :** Human fetal brain lysate

**Lane 3 :** Human fetal liver lysate

**Lane 4 :** Human fetal heart lysate

**Lane 5 :** Human fetal kidney lysate

**Lane 6 :** Human fetal spleen lysate

Lysates/proteins at 10 µg per lane.

### Secondary

**All lanes :** Goat Anti-Rabbit IgG Peroxidase Conjugate, specific to the non-reduced form of IgG at 1/10000 dilution

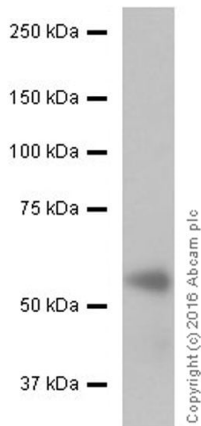
**Predicted band size:** 58 kDa

**Observed band size:** 57 kDa

**Exposure time:** 3 minutes

Blocking/Dilution buffer: 5% NFDm/TBST.

The expression profile observed is consistent with what has been described in the literature (PMID: 3261213).



Western blot - Anti-Salivary alpha amylase antibody [EPR19605] (ab201450)

Anti-Salivary alpha amylase antibody [EPR19605] (ab201450) at 1/5000 dilution + Human pancreas lysate at 10 µg

**Secondary**

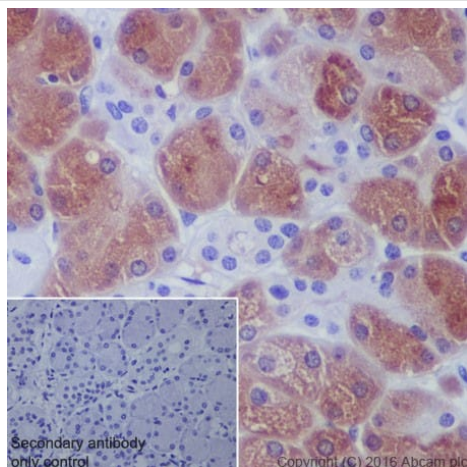
Goat Anti-Rabbit IgG Peroxidase Conjugate, specific to the non-reduced form of IgG at 1/10000 dilution

**Predicted band size:** 58 kDa

**Observed band size:** 57 kDa

**Exposure time:** 10 seconds

Blocking/Dilution buffer: 5% NFDm/TBST.

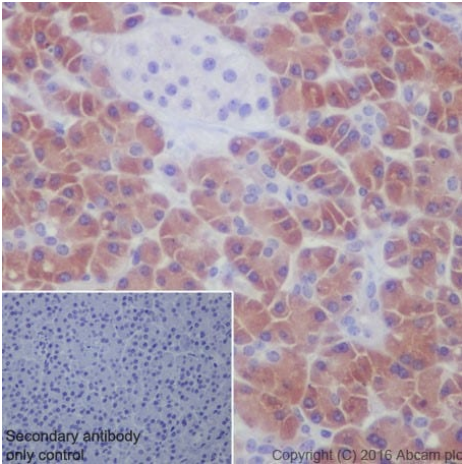


Immunohistochemistry (Formalin/PFA-fixed paraffin-embedded sections) - Anti-Salivary alpha amylase antibody [EPR19605] (ab201450)

Immunohistochemical analysis of paraffin-embedded human parotid gland tissue labeling salivary alpha-amylase + pancreatic alpha-amylase + alpha-carcinoid alpha-amylase with ab201450 at 1/2000 dilution, followed by Goat Anti-Rabbit IgG H&L (HRP) (**ab97051**) at 1/500 dilution. Cytoplasmic staining on human parotid gland is observed. Counter stained with Hematoxylin.

Secondary antibody only control: Used PBS instead of primary antibody, secondary antibody is Goat Anti-Rabbit IgG H&L (HRP) (**ab97051**) at 1/500 dilution.

Perform heat mediated antigen retrieval with Tris/EDTA buffer pH 9.0 before commencing with IHC staining protocol.

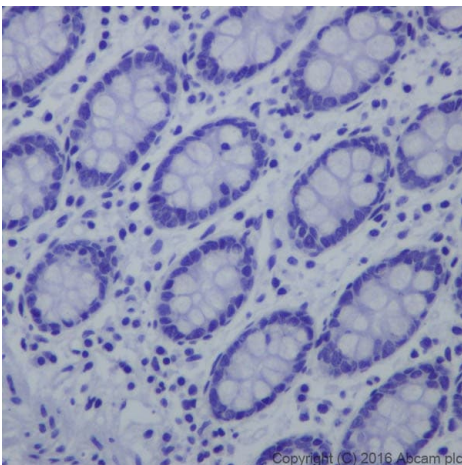


Immunohistochemistry (Formalin/PFA-fixed paraffin-embedded sections) - Anti-Salivary alpha amylase antibody [EPR19605] (ab201450)

Immunohistochemical analysis of paraffin-embedded human pancreas tissue labeling salivary alpha-amylase + pancreatic alpha-amylase + alpha-carcinoid alpha-amylase with ab201450 at 1/2000 dilution, followed by Goat Anti-Rabbit IgG H&L (HRP) ([ab97051](#)) at 1/500 dilution. Cytoplasmic staining on human pancreas is observed. Counter stained with Hematoxylin.

Secondary antibody only control: Used PBS instead of primary antibody, secondary antibody is Goat Anti-Rabbit IgG H&L (HRP) ([ab97051](#)) at 1/500 dilution.

Perform heat mediated antigen retrieval with Tris/EDTA buffer pH 9.0 before commencing with IHC staining protocol.



Immunohistochemistry (Formalin/PFA-fixed paraffin-embedded sections) - Anti-Salivary alpha amylase antibody [EPR19605] (ab201450)

Immunohistochemical analysis of paraffin-embedded human colon tissue with ab201450 at 1/2000 dilution, followed by Goat Anti-Rabbit IgG H&L (HRP) ([ab97051](#)) at 1/500 dilution.

**Negative control:** No staining on human colon.

Counter stained with Hematoxylin.

Perform heat mediated antigen retrieval with Tris/EDTA buffer pH 9.0 before commencing with IHC staining protocol.

### Why choose a recombinant antibody?



**Research with confidence**  
Consistent and reproducible results



**Long-term and scalable supply**  
Recombinant technology



**Success from the first experiment**  
Confirmed specificity



**Ethical standards compliant**  
Animal-free production

Anti-Salivary alpha amylase antibody [EPR19605]  
(ab201450)

**Please note:** All products are "FOR RESEARCH USE ONLY. NOT FOR USE IN DIAGNOSTIC PROCEDURES"

### Our Abpromise to you: Quality guaranteed and expert technical support

---

- Replacement or refund for products not performing as stated on the datasheet
- Valid for 12 months from date of delivery
- Response to your inquiry within 24 hours
- We provide support in Chinese, English, French, German, Japanese and Spanish
- Extensive multi-media technical resources to help you
- We investigate all quality concerns to ensure our products perform to the highest standards

If the product does not perform as described on this datasheet, we will offer a refund or replacement. For full details of the Abpromise, please visit <https://www.abcam.com/abpromise> or contact our technical team.

### Terms and conditions

---

- Guarantee only valid for products bought direct from Abcam or one of our authorized distributors