


### Anti-SALL1 antibody ab31526

★ ★ ★ ★ ★ [3 Abreviews](#) [15 References](#) [3 Images](#)

#### Overview

<b>Product name</b>	Anti-SALL1 antibody
<b>Description</b>	Rabbit polyclonal to SALL1
<b>Host species</b>	Rabbit
<b>Specificity</b>	Replenishment batches of ab31526 are tested in WB. Previous batches were additionally validated in ICC/IF. This application is still expected to work and is covered by our Abpromise guarantee.
<b>Tested applications</b>	<b>Suitable for:</b> ICC/IF, WB
<b>Species reactivity</b>	<b>Reacts with:</b> Mouse <b>Predicted to work with:</b> Chicken, Human, Drosophila melanogaster 
<b>Immunogen</b>	Synthetic peptide conjugated to KLH derived from within residues 1300 to the C-terminus of Human SALL1. Read Abcam's proprietary immunogen policy (Peptide available as <a href="#">ab31903</a> .)
<b>Positive control</b>	ICC/IF: mES cells. WB: E14Tg2a (Mouse embryonic stem cell line) Whole Cell Lysate
<b>General notes</b>	<p>The Life Science industry has been in the grips of a reproducibility crisis for a number of years. Abcam is leading the way in addressing this with our range of recombinant monoclonal antibodies and knockout edited cell lines for gold-standard validation. Please check that this product meets your needs before purchasing.</p> <p>If you have any questions, special requirements or concerns, please send us an inquiry and/or contact our Support team ahead of purchase. Recommended alternatives for this product can be found below, along with publications, customer reviews and Q&amp;As</p>

#### Properties

<b>Form</b>	Liquid
<b>Storage instructions</b>	Shipped at 4°C. Store at +4°C short term (1-2 weeks). Upon delivery aliquot. Store at -20°C or -80°C. Avoid freeze / thaw cycle.
<b>Storage buffer</b>	<p>pH: 7.40</p> <p>Preservative: 0.02% Sodium azide</p> <p>Constituent: PBS</p> <p>Batches of this product that have a concentration &lt; 1mg/ml may have BSA added as a stabilising agent. If you would like information about the formulation of a specific lot, please contact our</p>

	scientific support team who will be happy to help.
<b>Purity</b>	Immunogen affinity purified
<b>Clonality</b>	Polyclonal
<b>Isotype</b>	IgG

## Applications

**The Abpromise guarantee** Our **Abpromise guarantee** covers the use of ab31526 in the following tested applications.

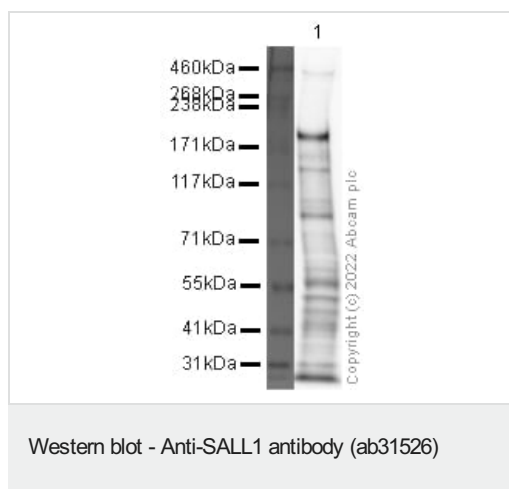
The application notes include recommended starting dilutions; optimal dilutions/concentrations should be determined by the end user.

Application	Abreviews	Notes
ICC/IF		Use a concentration of 1 µg/ml.
WB		Use a concentration of 1 µg/ml. Detects a band of approximately 200 kDa (predicted molecular weight: 140 kDa).

## Target

<b>Function</b>	Transcriptional repressor involved in organogenesis.
<b>Tissue specificity</b>	Highest levels in kidney. Lower levels in adult brain (enriched in corpus callosum, lower expression in substantia nigra) and liver.
<b>Involvement in disease</b>	Defects in SALL1 are the cause of Townes-Brocks syndrome (TBS) [MIM:107480]. TBS is a rare, autosomal dominant malformation syndrome with a combination of imperforate anus, triphalangeal and supernumerary thumbs, malformed ears and sensorineural hearing loss. Defects in SALL1 may cause a phenotype overlapping with TBS, similar to bronchio-oto-renal syndrome (BOR) [MIM:113650]. BOR is an autosomal dominant disorder, manifested by various combinations of preauricular pits, branchial fistulae or cysts, lacrimal duct stenosis, hearing loss, structural defects of the outer, middle, or inner ear, and renal dysplasia. Associated defects include asthenic habitus, long narrow facies, constricted palate, deep overbite, and myopia. Hearing loss may be due to Mondini type cochlear defect and stapes fixation.
<b>Sequence similarities</b>	Belongs to the sal C2H2-type zinc-finger protein family. Contains 9 C2H2-type zinc fingers.
<b>Developmental stage</b>	In fetal brain exclusively in neurons of the subependymal region of hypothalamus lateral to the third ventricle.
<b>Cellular localization</b>	Nucleus.

## Images



Anti-SALL1 antibody (ab31526) at 1 µg/ml + Mouse embryonic stem cell lysate at 10 µg

### Secondary

Goat polyclonal to Rabbit IgG - H&L - Pre-Adsorbed (HRP) at 1/50000 dilution

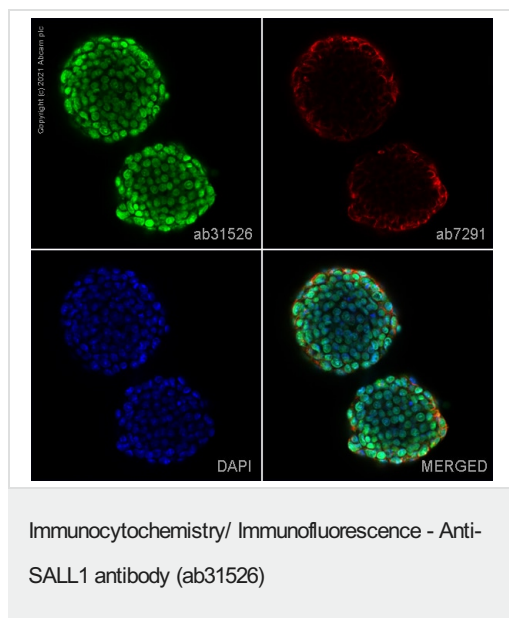
**Predicted band size:** 140 kDa

**Observed band size:** 200 kDa

**Exposure time:** 8 minutes

Blocking buffer: 2% BSA block

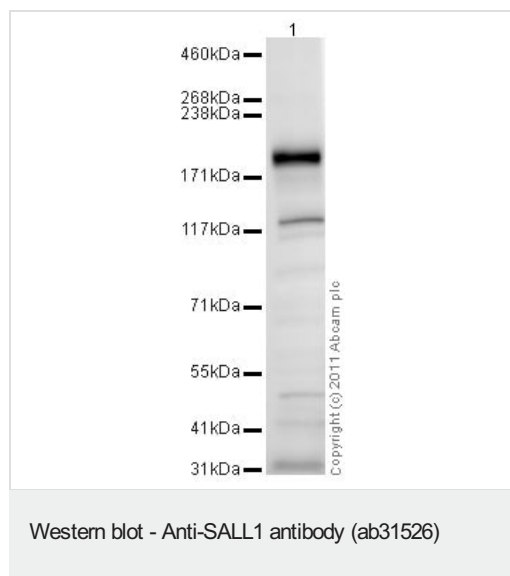
Gel type: TA



ab31526 staining SALL1 in mES cells. The cells were fixed with 100% methanol (5 min), permeabilized with 0.1% PBS-Tween for 5 minutes and then blocked with 1% BSA/10% normal goat serum/0.3M glycine in 0.1% PBS-Tween for 1h. The cells were then incubated overnight at 4°C with ab31526 at 1µg/ml and **ab7291**, Mouse monoclonal [DM1A] to alpha Tubulin - Loading Control. Cells were then incubated with **ab150081**, Goat polyclonal Secondary Antibody to Rabbit IgG - H&L (Alexa Fluor® 488), pre-adsorbed at 1/1000 dilution (shown in green) and **ab150120**, Goat polyclonal Secondary Antibody to Mouse IgG - H&L (Alexa Fluor® 594), pre-adsorbed at 1/1000 dilution (shown in pseudocolour red). Nuclear DNA was labelled with DAPI (shown in blue).

Also suitable in cells fixed with 4% paraformaldehyde (10 min).

Image was acquired with a confocal microscope (Leica-Microsystems TCS SP8) and a single confocal section is shown.



Anti-SALL1 antibody (ab31526) at 1 µg/ml + E14Tg2a (Mouse embryonic stem cell line) Whole Cell Lysate at 10 µg

#### Secondary

Goat Anti-Rabbit IgG H&L (HRP) preadsorbed (**ab97080**) at 1/5000 dilution

Performed under reducing conditions.

**Predicted band size:** 140 kDa

**Observed band size:** 200 kDa

**Additional bands at:** 130 kDa. We are unsure as to the identity of these extra bands.

**Exposure time:** 2 minutes

Although the predicted band size is 140 kDa based on Swiss-prot data, a band of 200 kDa has been previously observed. J Biol Chem. 2011 Jan 14;286(2):1037-45 PMID:21062744

**Please note:** All products are "FOR RESEARCH USE ONLY. NOT FOR USE IN DIAGNOSTIC PROCEDURES"

#### Our Abpromise to you: Quality guaranteed and expert technical support

- Replacement or refund for products not performing as stated on the datasheet
- Valid for 12 months from date of delivery
- Response to your inquiry within 24 hours
- We provide support in Chinese, English, French, German, Japanese and Spanish
- Extensive multi-media technical resources to help you
- We investigate all quality concerns to ensure our products perform to the highest standards

If the product does not perform as described on this datasheet, we will offer a refund or replacement. For full details of the Abpromise, please visit <https://www.abcam.com/abpromise> or contact our technical team.

#### Terms and conditions

- Guarantee only valid for products bought direct from Abcam or one of our authorized distributors