




Product datasheet

Anti-SAP30L antibody - C-terminal ab220491

[2 Images](#)

Overview

Product name	Anti-SAP30L antibody - C-terminal
Description	Rabbit polyclonal to SAP30L - C-terminal
Host species	Rabbit
Tested applications	Suitable for: WB, ICC/IF
Species reactivity	Reacts with: Human Predicted to work with: Mouse, Xenopus laevis, Xenopus tropicalis 
Immunogen	Recombinant fragment corresponding to Human SAP30L aa 150 to the C-terminus (C terminal). Database link: Q9HAJ7  Run BLAST with  Run BLAST with
Positive control	WB: RT4, U251 MG cell lysate, human liver and tonsil tissue lysates. ICC/IF: MCF7 cells.
General notes	<p>The Life Science industry has been in the grips of a reproducibility crisis for a number of years. Abcam is leading the way in addressing this with our range of recombinant monoclonal antibodies and knockout edited cell lines for gold-standard validation. Please check that this product meets your needs before purchasing.</p> <p>If you have any questions, special requirements or concerns, please send us an inquiry and/or contact our Support team ahead of purchase. Recommended alternatives for this product can be found below, along with publications, customer reviews and Q&As</p>

Properties

Form	Liquid
Storage instructions	Shipped at 4°C. Store at +4°C short term (1-2 weeks). Upon delivery aliquot. Store at -20°C long term. Avoid freeze / thaw cycle.
Storage buffer	pH: 7.20 Preservative: 0.02% Sodium azide Constituents: 40% Glycerol (glycerin, glycerine), PBS
Purity	Immunogen affinity purified
Clonality	Polyclonal
Isotype	IgG

Applications

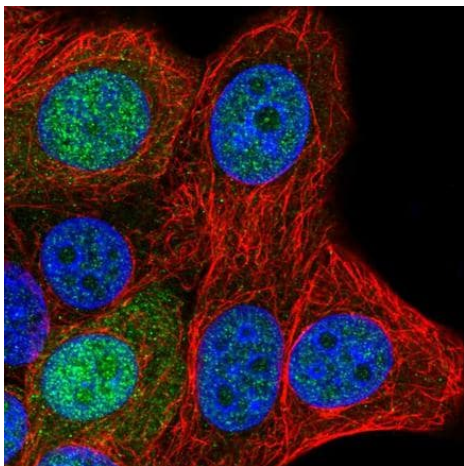
The Abpromise guarantee Our **Abpromise guarantee** covers the use of ab220491 in the following tested applications. The application notes include recommended starting dilutions; optimal dilutions/concentrations should be determined by the end user.

Application	Abreviews	Notes
WB		Use a concentration of 0.04 - 0.4 µg/ml. Predicted molecular weight: 21 kDa.
ICC/IF		Use a concentration of 0.25 - 2 µg/ml. Fixation/Permeabilization: PFA/Triton X-100.

Target

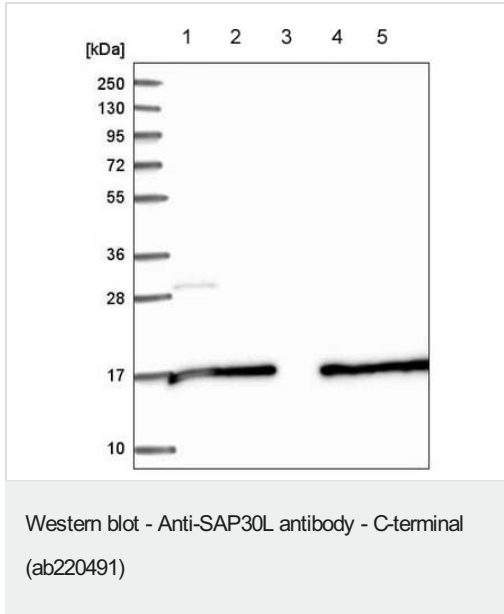
Function	Involved in the functional recruitment of the class 1 Sin3-histone deacetylase complex (HDAC) to the nucleolus.
Tissue specificity	Expressed in all tissues tested with highest levels in testis.
Sequence similarities	Belongs to the SAP30 family.
Cellular localization	Nucleus > nucleolus.

Images



Immunofluorescent analysis of MCF7 cells (PFA-fixed/Triton X-100 permeabilized) labeling SAP30L with ab220491 at 4 µg/mL (green).

Immunocytochemistry/ Immunofluorescence - Anti-SAP30L antibody - C-terminal (ab220491)



All lanes : Anti-SAP30L antibody - C-terminal (ab220491) at 1/100 dilution

Lane 1 : RT4 cell lysate

Lane 2 : U251 MG cell lysate

Lane 3 : Human plasma lysate

Lane 4 : Human liver lysate

Lane 5 : Human tonsil lysate

Predicted band size: 21 kDa

Please note: All products are "FOR RESEARCH USE ONLY. NOT FOR USE IN DIAGNOSTIC PROCEDURES"

Our Abpromise to you: Quality guaranteed and expert technical support

- Replacement or refund for products not performing as stated on the datasheet
- Valid for 12 months from date of delivery
- Response to your inquiry within 24 hours
- We provide support in Chinese, English, French, German, Japanese and Spanish
- Extensive multi-media technical resources to help you
- We investigate all quality concerns to ensure our products perform to the highest standards

If the product does not perform as described on this datasheet, we will offer a refund or replacement. For full details of the Abpromise, please visit <https://www.abcam.com/abpromise> or contact our technical team.

Terms and conditions

- Guarantee only valid for products bought direct from Abcam or one of our authorized distributors