


## Product datasheet

### Anti-SAR1B antibody [EPR10105(B)] ab155278

Recombinant RabMAb

★★★★★ [3 Abreviews](#) [4 References](#) [6 Images](#)

#### Overview

Product name	Anti-SAR1B antibody [EPR10105(B)]
Description	Rabbit monoclonal [EPR10105(B)] to SAR1B
Host species	Rabbit
Tested applications	<b>Suitable for:</b> Flow Cyt (Intra), ICC/IF, WB, IHC-P
Species reactivity	<b>Reacts with:</b> Human <b>Predicted to work with:</b> Mouse, Rat 
Immunogen	Synthetic peptide. This information is proprietary to Abcam and/or its suppliers.
Positive control	293T, fetal liver, fetal brain and Human skeletal muscle lysates; Human gastric carcinoma and brain tissue; 293T cells.
General notes	<p>This product is a recombinant monoclonal antibody, which offers several advantages including:</p> <ul style="list-style-type: none"> <li>- High batch-to-batch consistency and reproducibility</li> <li>- Improved sensitivity and specificity</li> <li>- Long-term security of supply</li> <li>- Animal-free production</li> </ul> <p>For more information <a href="#">see here</a>.</p> <p>Our RabMAb<sup>®</sup> technology is a patented hybridoma-based technology for making rabbit monoclonal antibodies. For details on our patents, please refer to <a href="#">RabMAb<sup>®</sup> patents</a>.</p>

#### Properties

Form	Liquid
Storage instructions	Shipped at 4°C. Store at -20°C.
Storage buffer	pH: 7.2 Preservative: 0.01% Sodium azide Constituents: 9% PBS, 40% Glycerol (glycerin, glycerine), 0.05% BSA, 50% Tissue culture supernatant
Purity	Tissue culture supernatant
Clonality	Monoclonal
Clone number	EPR10105(B)

Isotype

IgG

## Applications

### The Abpromise guarantee

Our **Abpromise guarantee** covers the use of ab155278 in the following tested applications.

The application notes include recommended starting dilutions; optimal dilutions/concentrations should be determined by the end user.

Application	Abreviews	Notes
Flow Cyt (Intra)		1/10 - 1/100. <b>ab172730</b> - Rabbit monoclonal IgG, is suitable for use as an isotype control with this antibody.
ICC/IF	★★★★★ (2)	1/50 - 1/100.
WB	★★★★★ (1)	1/1000 - 1/10000. Predicted molecular weight: 22 kDa.
IHC-P		1/50 - 1/100. Perform heat mediated antigen retrieval with citrate buffer pH 6 before commencing with IHC staining protocol.

## Target

### Function

Involved in transport from the endoplasmic reticulum to the Golgi apparatus. Activated by the guanine nucleotide exchange factor PREB. Involved in the selection of the protein cargo and the assembly of the COPII coat complex.

### Tissue specificity

Expressed in many tissues including small intestine, liver, muscle and brain.

### Involvement in disease

Defects in SAR1B are the cause of chylomicron retention disease (CMRD) [MIM:246700]; also known as Anderson disease (ANDD). CMRD is an autosomal recessive disorder of severe fat malabsorption associated with failure to thrive in infancy. The condition is characterized by deficiency of fat-soluble vitamins, low blood cholesterol levels, and a selective absence of chylomicrons from blood. Affected individuals accumulate chylomicron-like particles in membrane-bound compartments of enterocytes, which contain large cytosolic lipid droplets.

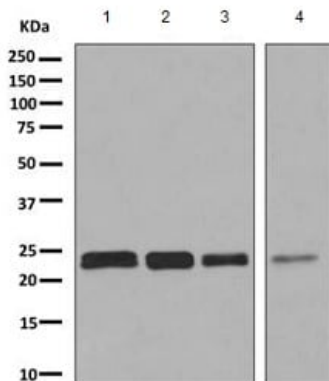
### Sequence similarities

Belongs to the small GTPase superfamily. SAR1 family.

### Cellular localization

Endoplasmic reticulum membrane. Golgi apparatus > Golgi stack membrane. Associated with the endoplasmic reticulum and Golgi stacks, in particular in the juxta-nuclear Golgi region.

## Images



Western blot - Anti-SAR1B antibody [EPR10105(B)] (ab155278)

**All lanes :** Anti-SAR1B antibody [EPR10105(B)] (ab155278) at 1/1000 dilution

**Lane 1 :** 293T cell lysate

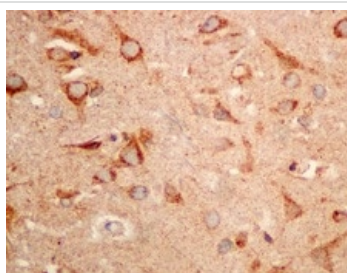
**Lane 2 :** Fetal liver tissue lysate

**Lane 3 :** Fetal brain tissue lysate

**Lane 4 :** Human skeletal muscle tissue lysate

Lysates/proteins at 10 µg per lane.

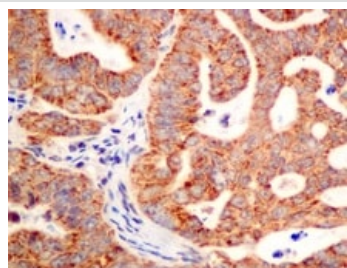
**Predicted band size:** 22 kDa



Immunohistochemistry (Formalin/PFA-fixed paraffin-embedded sections) - Anti-SAR1B antibody [EPR10105(B)] (ab155278)

Immunohistochemical analysis of paraffin embedded Human brain tissue labeling SAR1B with ab155278 at 1/50 dilution.

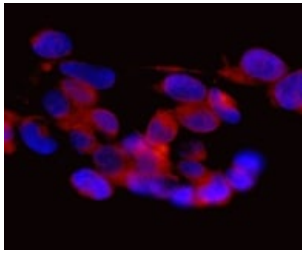
Perform heat mediated antigen retrieval with citrate buffer pH 6 before commencing with IHC staining protocol.



Immunohistochemistry (Formalin/PFA-fixed paraffin-embedded sections) - Anti-SAR1B antibody [EPR10105(B)] (ab155278)

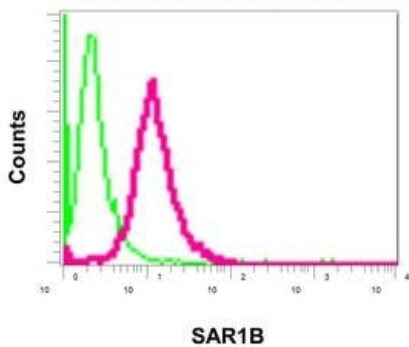
Immunohistochemical analysis of paraffin embedded Human gastric carcinoma tissue labeling SAR1B with ab155278 at 1/50 dilution.

Perform heat mediated antigen retrieval with citrate buffer pH 6 before commencing with IHC staining protocol.



Immunofluorescence analysis of 293T cells labeling SAR1B with ab155278 at a 1/50 dilution.

Immunocytochemistry/ Immunofluorescence - Anti-SAR1B antibody [EPR10105(B)] (ab155278)



Intracellular flow cytometric analysis of permeabilized 293T cells using ab155278 at a 1/10 dilution (red) or a rabbit IgG (negative) (green).

Flow Cytometry (Intracellular) - Anti-SAR1B antibody [EPR10105(B)] (ab155278)

Why choose a recombinant antibody?



Anti-SAR1B antibody [EPR10105(B)] (ab155278)

**Please note:** All products are "FOR RESEARCH USE ONLY. NOT FOR USE IN DIAGNOSTIC PROCEDURES"

**Our Promise to you: Quality guaranteed and expert technical support**

- Replacement or refund for products not performing as stated on the datasheet
- Valid for 12 months from date of delivery

- Response to your inquiry within 24 hours
- We provide support in Chinese, English, French, German, Japanese and Spanish
- Extensive multi-media technical resources to help you
- We investigate all quality concerns to ensure our products perform to the highest standards

If the product does not perform as described on this datasheet, we will offer a refund or replacement. For full details of the Abpromise, please visit <https://www.abcam.com/abpromise> or contact our technical team.

#### **Terms and conditions**

---

- Guarantee only valid for products bought direct from Abcam or one of our authorized distributors