

Anti-SARM antibody ab17812

★★★★☆ [4 Abreviews](#) [3 References](#) [3 Images](#)

Overview

Product name	Anti-SARM antibody
Description	Rabbit polyclonal to SARM
Host species	Rabbit
Tested applications	Suitable for: WB, ICC/IF
Species reactivity	Reacts with: Mouse, Human
Immunogen	Synthetic peptide (Human) (C terminal).
Positive control	Daudi cells
General notes	<p>The Life Science industry has been in the grips of a reproducibility crisis for a number of years. Abcam is leading the way in addressing this with our range of recombinant monoclonal antibodies and knockout edited cell lines for gold-standard validation. Please check that this product meets your needs before purchasing.</p> <p>If you have any questions, special requirements or concerns, please send us an inquiry and/or contact our Support team ahead of purchase. Recommended alternatives for this product can be found below, along with publications, customer reviews and Q&As</p>

Properties

Form	Liquid
Storage instructions	Shipped at 4°C. Store at +4°C short term (1-2 weeks). Store at +4°C.
Storage buffer	pH: 7.2 Preservative: 0.02% Sodium azide Constituent: PBS
Purity	Immunogen affinity purified
Clonality	Polyclonal
Isotype	IgG

Applications

The Abpromise guarantee Our **Abpromise guarantee** covers the use of ab17812 in the following tested applications. The application notes include recommended starting dilutions; optimal dilutions/concentrations should be determined by the end user.

Application	Abreviews	Notes
WB	★★★★★ (4)	Use a concentration of 0.5 - 2 µg/ml. Predicted molecular weight: 80 kDa.
ICC/IF		Use a concentration of 2 µg/ml.

Target

Function

Involved in innate immune response. Acts as a negative regulator of TICAM1/TRIF-dependent Toll-like receptor signaling by inhibiting induction of TLR3- and TLR4-dependent genes. Specifically blocks TICAM1/TRIF-dependent transcription-factor activation and gene induction, without affecting the MYD88-dependent pathway or non-TLR signaling. Negative regulator of NF-kappa-B and IRF activation.

Tissue specificity

Predominantly expressed in kidney and liver. Expressed at lower level in placenta.

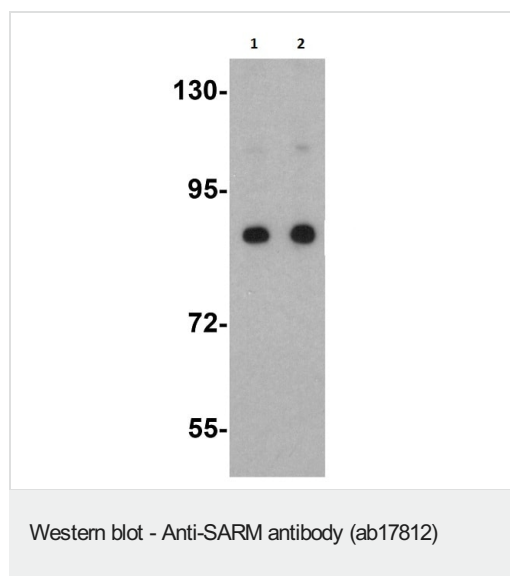
Sequence similarities

Contains 2 SAM (sterile alpha motif) domains.
Contains 1 TIR domain.

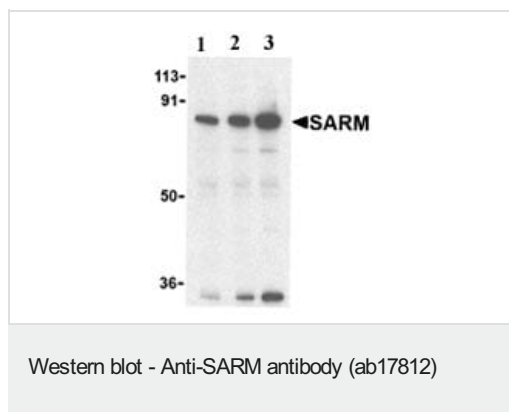
Cellular localization

Cytoplasm.

Images



Western Blot of Daudi cell lysate labeling SARM with Anti-SARM antibody (ab17812) at (1) 0.5 and (2) 1µg/ml.



Lane 1 : Anti-SARM antibody (ab17812) at 0.5 µg/ml

Lane 2 : Anti-SARM antibody (ab17812) at 1 µg/ml

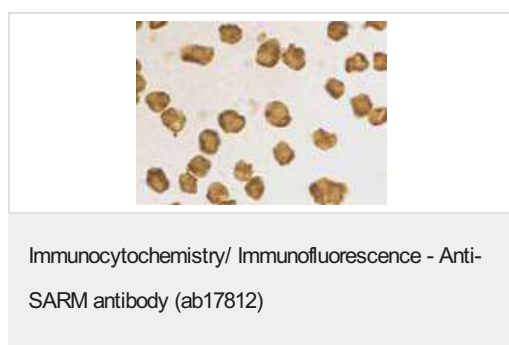
Lane 3 : Anti-SARM antibody (ab17812) at 2 µg/ml

All lanes : Daudi cell lysate

Predicted band size: 80 kDa

Observed band size: 80 kDa

Western blot analysis of SARM (79 kDa) in Daudi cell lysates with ab17812 at (A) 0.5, (B) 1, and (C) 2 µg/ml.



ab17812 at 2µg/ml staining of SARM in Daudi cells by ICC/IF

Please note: All products are "FOR RESEARCH USE ONLY. NOT FOR USE IN DIAGNOSTIC PROCEDURES"

Our Abpromise to you: Quality guaranteed and expert technical support

- Replacement or refund for products not performing as stated on the datasheet
- Valid for 12 months from date of delivery
- Response to your inquiry within 24 hours
- We provide support in Chinese, English, French, German, Japanese and Spanish
- Extensive multi-media technical resources to help you
- We investigate all quality concerns to ensure our products perform to the highest standards

If the product does not perform as described on this datasheet, we will offer a refund or replacement. For full details of the Abpromise, please visit <https://www.abcam.com/abpromise> or contact our technical team.

Terms and conditions

- Guarantee only valid for products bought direct from Abcam or one of our authorized distributors