


Product datasheet

Anti-SAT1 antibody ab105220

★★★★★ [1 Abreviews](#) [7 References](#) [1 Image](#)

Overview

| | |
|----------------------------|---|
| Product name | Anti-SAT1 antibody |
| Description | Rabbit polyclonal to SAT1 |
| Host species | Rabbit |
| Tested applications | Suitable for: WB |
| Species reactivity | Reacts with: Human Predicted to work with: Mouse, Rat, Rabbit, Cow, Pig, Macaque monkey, Gorilla, Chinese hamster  |
| Immunogen | Synthetic peptide corresponding to Human SAT1 aa 100 to the C-terminus conjugated to keyhole limpet haemocyanin. (Peptide available as ab127967) |
| Positive control | Recombinant Human SAT1 protein (ab87666) can be used as a positive control in WB. This antibody gave a positive signal in Human Adipose tissue lysate. |
| General notes | <p>The Life Science industry has been in the grips of a reproducibility crisis for a number of years. Abcam is leading the way in addressing this with our range of recombinant monoclonal antibodies and knockout edited cell lines for gold-standard validation. Please check that this product meets your needs before purchasing.</p> <p>If you have any questions, special requirements or concerns, please send us an inquiry and/or contact our Support team ahead of purchase. Recommended alternatives for this product can be found below, along with publications, customer reviews and Q&As</p> |

Properties

| | |
|-----------------------------|--|
| Form | Liquid |
| Storage instructions | Shipped at 4°C. Store at +4°C short term (1-2 weeks). Upon delivery aliquot. Store at -20°C or -80°C. Avoid freeze / thaw cycle. |
| Storage buffer | pH: 7.40 Preservative: 0.02% Sodium azide Constituents: 1% BSA, PBS |
| | Batches of this product that have a concentration < 1mg/ml may have BSA added as a stabilising agent. If you would like information about the formulation of a specific lot, please contact our scientific support team who will be happy to help. |

| | |
|------------------|-----------------------------|
| Purity | Immunogen affinity purified |
| Clonality | Polyclonal |
| Isotype | IgG |

Applications

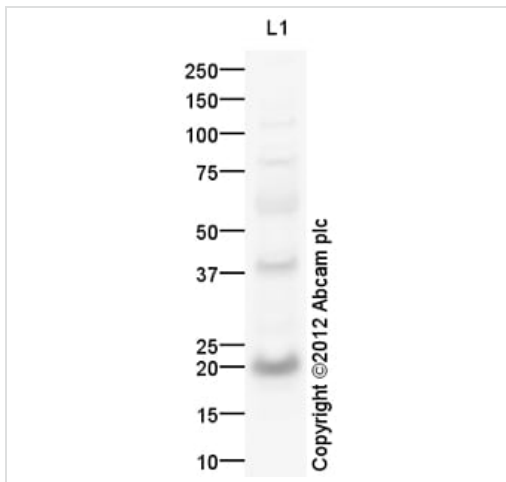
The Abpromise guarantee Our **Abpromise guarantee** covers the use of ab105220 in the following tested applications. The application notes include recommended starting dilutions; optimal dilutions/concentrations should be determined by the end user.

| Application | Abreviews | Notes |
|-------------|-----------|--|
| WB | | Use a concentration of 1 µg/ml. Detects a band of approximately 20 kDa (predicted molecular weight: 20 kDa). |

Target

| | |
|-------------------------------|--|
| Function | Enzyme which catalyzes the acetylation of polyamines. Substrate specificity: norspermidine = spermidine >> spermine > N(1)-acetylspermine > putrescine. This highly regulated enzyme allows a fine attenuation of the intracellular concentration of polyamines. Also involved in the regulation of polyamine transport out of cells. Acts on 1,3-diaminopropane, 1,5-diaminopentane, putrescine, spermidine (forming N(1)- and N(8)-acetylspermidine), spermine, N(1)-acetylspermidine and N(8)-acetylspermidine. |
| Pathway | Amine and polyamine degradation; putrescine degradation; N-acetylputrescine from putrescine: step 1/1. |
| Involvement in disease | Keratitis follicularis spinulosa decalvans X-linked |
| Sequence similarities | Belongs to the acetyltransferase family. Contains 1 N-acetyltransferase domain. |
| Cellular localization | Cytoplasm. |

Images



Western blot - Anti-SAT1 antibody (ab105220)

Anti-SAT1 antibody (ab105220) at 1 µg/ml + Human adipose normal tissue lysate - total protein (**ab28980**) at 25 µg

Secondary

Goat Anti-Rabbit IgG H&L (HRP) preadsorbed (**ab97080**) at 1/5000 dilution

Developed using the ECL technique.

Performed under reducing conditions.

Predicted band size: 20 kDa

Observed band size: 20 kDa

Additional bands at: 110 kDa, 39 kDa, 60 kDa, 78 kDa. We are unsure as to the identity of these extra bands.

Exposure time: 12 minutes

Please note: All products are "FOR RESEARCH USE ONLY. NOT FOR USE IN DIAGNOSTIC PROCEDURES"

Our Abpromise to you: Quality guaranteed and expert technical support

- Replacement or refund for products not performing as stated on the datasheet
- Valid for 12 months from date of delivery
- Response to your inquiry within 24 hours
- We provide support in Chinese, English, French, German, Japanese and Spanish
- Extensive multi-media technical resources to help you
- We investigate all quality concerns to ensure our products perform to the highest standards

If the product does not perform as described on this datasheet, we will offer a refund or replacement. For full details of the Abpromise, please visit <https://www.abcam.com/abpromise> or contact our technical team.

Terms and conditions

- Guarantee only valid for products bought direct from Abcam or one of our authorized distributors