


Product datasheet

Anti-SBDS antibody ab154222

4 Images

Overview

Product name	Anti-SBDS antibody
Description	Rabbit polyclonal to SBDS
Host species	Rabbit
Tested applications	Suitable for: WB, IHC-P, ICC/IF
Species reactivity	Reacts with: Mouse, Human Predicted to work with: Rat, Chicken, Cow, Xenopus laevis, Xenopus tropicalis 
Immunogen	Recombinant fragment corresponding to Human SBDS aa 1-250. Database link: Q9Y3A5
Positive control	Recombinant Human SBDS protein (ab99957) can be used as a positive control in WB. 293T, A431, H1299, HepG2, Molt-4, Raji and Mouse liver lysate, HeLa cells, H1299 xenograft tissue.
General notes	<p>The Life Science industry has been in the grips of a reproducibility crisis for a number of years. Abcam is leading the way in addressing this with our range of recombinant monoclonal antibodies and knockout edited cell lines for gold-standard validation. Please check that this product meets your needs before purchasing.</p> <p>If you have any questions, special requirements or concerns, please send us an inquiry and/or contact our Support team ahead of purchase. Recommended alternatives for this product can be found below, along with publications, customer reviews and Q&As</p>

Properties

Form	Liquid
Storage instructions	Shipped at 4°C. Upon delivery aliquot. Store at -20°C or -80°C. Avoid freeze / thaw cycle.
Storage buffer	pH: 7.00 Preservative: 0.01% Thimerosal (merthiolate) Constituents: 1.21% Tris, 0.75% Glycine, 10% Glycerol (glycerin, glycerine)
Purity	Immunogen affinity purified
Clonality	Polyclonal
Isotype	IgG

Applications

The Abpromise guarantee

Our **Abpromise guarantee** covers the use of ab154222 in the following tested applications.

The application notes include recommended starting dilutions; optimal dilutions/concentrations should be determined by the end user.

Application	Abreviews	Notes
WB		1/500 - 1/3000. Predicted molecular weight: 29 kDa.
IHC-P		1/100 - 1/1000.
ICC/IF		1/100 - 1/1000.

Target

Function

Required for the assembly of mature ribosomes and ribosome biogenesis. Together with EFTUD1, triggers the GTP-dependent release of EIF6 from 60S pre-ribosomes in the cytoplasm, thereby activating ribosomes for translation competence by allowing 80S ribosome assembly and facilitating EIF6 recycling to the nucleus, where it is required for 60S rRNA processing and nuclear export. Required for normal levels of protein synthesis. May play a role in cellular stress resistance. May play a role in cellular response to DNA damage. May play a role in cell proliferation.

Tissue specificity

Widely expressed.

Involvement in disease

Defects in SBDS are the cause of Shwachman-Diamond syndrome (SDS) [MIM:260400]. SDS is an autosomal recessive disorder characterized by pancreatic exocrine insufficiency, hematologic dysfunction, and skeletal abnormalities.

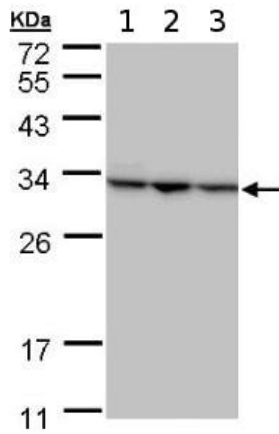
Sequence similarities

Belongs to the SDO1/SBDS family.

Cellular localization

Cytoplasm. Nucleus > nucleolus. Nucleus > nucleoplasm. Cytoplasm > cytoskeleton > spindle. Primarily detected in the cytoplasm, and at low levels in nucleus and nucleolus (PubMed:19602484 and PubMed:17475909). Detected in the nucleolus during G1 and G2 phase of the cell cycle, and diffusely distributed in the nucleus during S phase. Detected at the mitotic spindle. Colocalizes with the microtubule organizing center during interphase.

Images



Western blot - Anti-SBDS antibody (ab154222)

All lanes : Anti-SBDS antibody (ab154222) at 1/1000 dilution

Lane 1 : H1299 whole cell lysate

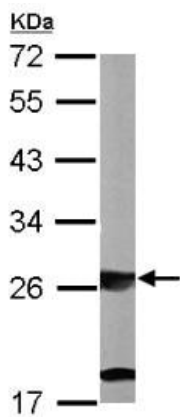
Lane 2 : HeLa whole cell lysate

Lane 3 : HepG2 whole cell lysate

Lysates/proteins at 30 µg per lane.

Predicted band size: 29 kDa

12% SDS PAGE

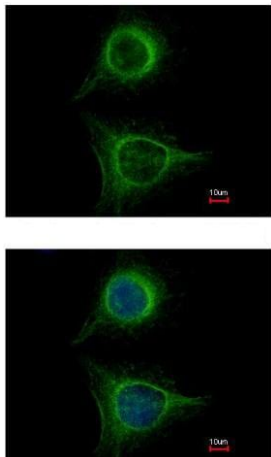


Western blot - Anti-SBDS antibody (ab154222)

Anti-SBDS antibody (ab154222) at 1/1000 dilution + Mouse liver whole cell lysate at 50 µg

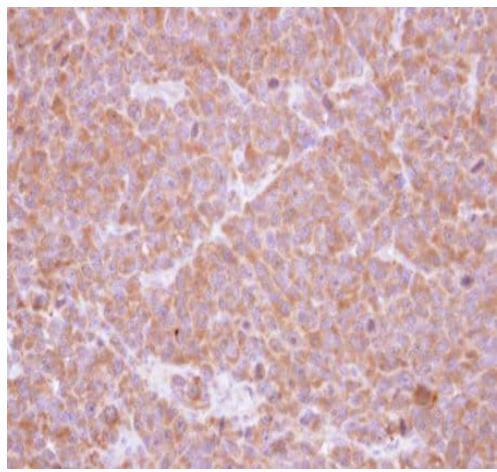
Predicted band size: 29 kDa

12% SDS PAGE



Immunocytochemistry/ Immunofluorescence - Anti-SBDS antibody (ab154222)

Immunofluorescence analysis of methanol-fixed HeLa cells, labelling SBDS with ab154222 at 1/500 dilution (top image), and costained with Hoescht 33342 (bottom image)



Immunohistochemical analysis of paraffin embedded Human H1299 xenograft tissue labelling SBDS with ab154222 at a 1/500 dilution.

Immunohistochemistry (Formalin/PFA-fixed paraffin-embedded sections) - Anti-SBDS antibody (ab154222)

Please note: All products are "FOR RESEARCH USE ONLY. NOT FOR USE IN DIAGNOSTIC PROCEDURES"

Our Abpromise to you: Quality guaranteed and expert technical support

- Replacement or refund for products not performing as stated on the datasheet
- Valid for 12 months from date of delivery
- Response to your inquiry within 24 hours
- We provide support in Chinese, English, French, German, Japanese and Spanish
- Extensive multi-media technical resources to help you
- We investigate all quality concerns to ensure our products perform to the highest standards

If the product does not perform as described on this datasheet, we will offer a refund or replacement. For full details of the Abpromise, please visit <https://www.abcam.com/abpromise> or contact our technical team.

Terms and conditions

- Guarantee only valid for products bought direct from Abcam or one of our authorized distributors