


## Product datasheet

### Anti-SBDS antibody [EPR7820] ab128946

Recombinant RabMAb

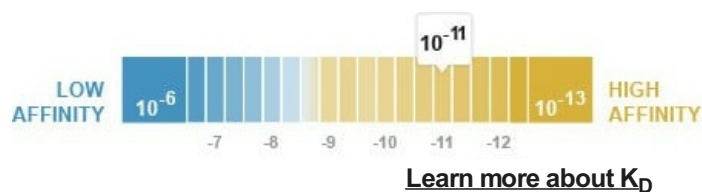
[4 References](#) [3 Images](#)

#### Overview

Product name	Anti-SBDS antibody [EPR7820]
Description	Rabbit monoclonal [EPR7820] to SBDS
Host species	Rabbit
Tested applications	<b>Suitable for:</b> WB <b>Unsuitable for:</b> Flow Cyt or IHC-P
Species reactivity	<b>Reacts with:</b> Human <b>Predicted to work with:</b> Mouse, Rat 
Immunogen	Synthetic peptide within Human SBDS aa 200-300 (C terminal). The exact sequence is proprietary.
Positive control	293T, HepG2, Caco 2 cell lysates
General notes	<p>This product is a recombinant monoclonal antibody, which offers several advantages including:</p> <ul style="list-style-type: none"> <li>- High batch-to-batch consistency and reproducibility</li> <li>- Improved sensitivity and specificity</li> <li>- Long-term security of supply</li> <li>- Animal-free production</li> </ul> <p>For more information <a href="#">see here</a>.</p> <p>Our RabMAb<sup>®</sup> technology is a patented hybridoma-based technology for making rabbit monoclonal antibodies. For details on our patents, please refer to <a href="#">RabMAb<sup>®</sup> patents</a>.</p>

#### Properties

Form	Liquid
Storage instructions	Shipped at 4°C. Store at -20°C. Stable for 12 months at -20°C.
Dissociation constant (K <sub>D</sub> )	K <sub>D</sub> = 1.88 x 10 <sup>-11</sup> M



<b>Storage buffer</b>	pH: 7.20 Preservative: 0.01% Sodium azide Constituents: 9% PBS, 40% Glycerol (glycerin, glycerine), 0.05% BSA, 50% Tissue culture supernatant
<b>Purity</b>	Protein A purified
<b>Clonality</b>	Monoclonal
<b>Clone number</b>	EPR7820
<b>Isotype</b>	IgG

## Applications

**The Abpromise guarantee** Our **Abpromise guarantee** covers the use of ab128946 in the following tested applications. The application notes include recommended starting dilutions; optimal dilutions/concentrations should be determined by the end user.

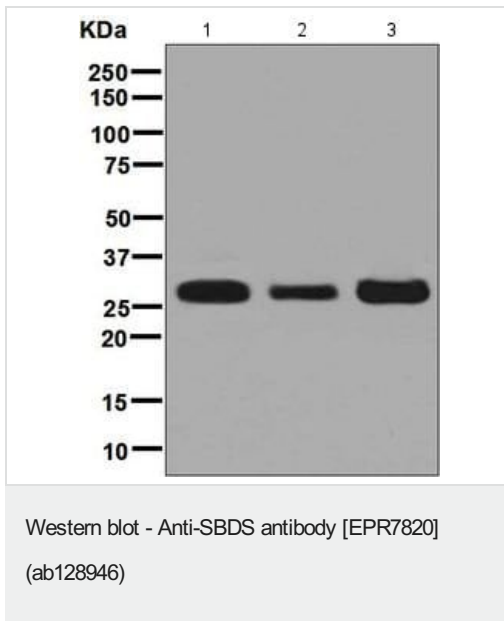
Application	Abreviews	Notes
<b>WB</b>		1/10000 - 1/50000. Predicted molecular weight: 29 kDa.

**Application notes** Is unsuitable for Flow Cyt or IHC-P.

## Target

<b>Function</b>	Required for the assembly of mature ribosomes and ribosome biogenesis. Together with EFTUD1, triggers the GTP-dependent release of EIF6 from 60S pre-ribosomes in the cytoplasm, thereby activating ribosomes for translation competence by allowing 80S ribosome assembly and facilitating EIF6 recycling to the nucleus, where it is required for 60S rRNA processing and nuclear export. Required for normal levels of protein synthesis. May play a role in cellular stress resistance. May play a role in cellular response to DNA damage. May play a role in cell proliferation.
<b>Tissue specificity</b>	Widely expressed.
<b>Involvement in disease</b>	Defects in SBDS are the cause of Shwachman-Diamond syndrome (SDS) [MIM:260400]. SDS is an autosomal recessive disorder characterized by pancreatic exocrine insufficiency, hematologic dysfunction, and skeletal abnormalities.
<b>Sequence similarities</b>	Belongs to the SDO1/SBDS family.
<b>Cellular localization</b>	Cytoplasm. Nucleus > nucleolus. Nucleus > nucleoplasm. Cytoplasm > cytoskeleton > spindle. Primarily detected in the cytoplasm, and at low levels in nucleus and nucleolus (PubMed:19602484 and PubMed:17475909). Detected in the nucleolus during G1 and G2 phase of the cell cycle, and diffusely distributed in the nucleus during S phase. Detected at the mitotic spindle. Colocalizes with the microtubule organizing center during interphase.

## Images



**All lanes** : Anti-SBDS antibody [EPR7820] (ab128946) at 1/10000 dilution

**Lane 1** : 293T cell lysate

**Lane 2** : HepG2 cell lysate

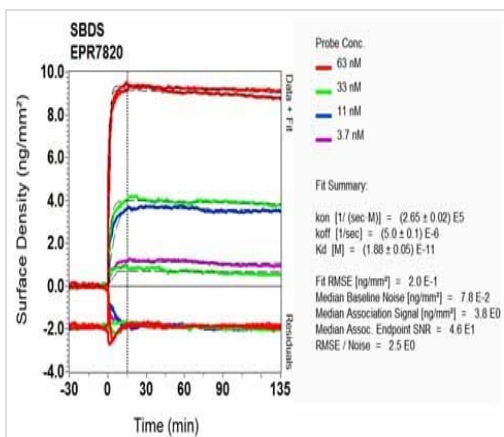
**Lane 3** : Caco 2 cell lysate

Lysates/proteins at 10 µg per lane.

### Secondary

**All lanes** : HRP labelled goat anti-rabbit at 1/2000 dilution

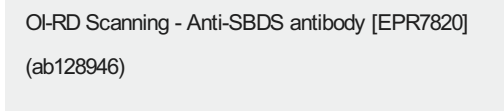
**Predicted band size:** 29 kDa



Equilibrium dissociation constant ( $K_D$ )

Learn more about  $K_D$

[Click here to learn more about  \$K\_D\$](#)



### Why choose a recombinant antibody?



**Research with confidence**  
Consistent and reproducible results



**Long-term and scalable supply**  
Recombinant technology



**Success from the first experiment**  
Confirmed specificity



**Ethical standards compliant**  
Animal-free production

Anti-SBDS antibody [EPR7820] (ab128946)

**Please note:** All products are "FOR RESEARCH USE ONLY. NOT FOR USE IN DIAGNOSTIC PROCEDURES"

### Our Abpromise to you: Quality guaranteed and expert technical support

---

- Replacement or refund for products not performing as stated on the datasheet
- Valid for 12 months from date of delivery
- Response to your inquiry within 24 hours
- We provide support in Chinese, English, French, German, Japanese and Spanish
- Extensive multi-media technical resources to help you
- We investigate all quality concerns to ensure our products perform to the highest standards

If the product does not perform as described on this datasheet, we will offer a refund or replacement. For full details of the Abpromise, please visit <https://www.abcam.com/abpromise> or contact our technical team.

### Terms and conditions

---

- Guarantee only valid for products bought direct from Abcam or one of our authorized distributors