




## Product datasheet

### Anti-SCAMP1 antibody ab3430

[2 References](#) [3 Images](#)

#### Overview

<b>Product name</b>	Anti-SCAMP1 antibody
<b>Description</b>	Rabbit polyclonal to SCAMP1
<b>Host species</b>	Rabbit
<b>Tested applications</b>	<b>Suitable for:</b> WB
<b>Species reactivity</b>	<b>Reacts with:</b> Mouse, Rat, Human <b>Predicted to work with:</b> Pig 
<b>Immunogen</b>	Synthetic peptide corresponding to Human SCAMP1 aa 1-17. Sequence: MSDFDSNPFADPDLNNP  (Peptide available as <a href="#">ab4969</a> ) <div>  <a href="#">Run BLAST with</a>  <a href="#">Run BLAST with</a> </div>
<b>Positive control</b>	WB: U-87MG, Neuro-2a, SH-SY5Y, SK-N-AS, T98G, IMR-32, Rat brain tissue and Wild-type HeLa cell lysate.
<b>General notes</b>	<p>The Life Science industry has been in the grips of a reproducibility crisis for a number of years. Abcam is leading the way in addressing this with our range of recombinant monoclonal antibodies and knockout edited cell lines for gold-standard validation. Please check that this product meets your needs before purchasing.</p> <p>If you have any questions, special requirements or concerns, please send us an inquiry and/or contact our Support team ahead of purchase. Recommended alternatives for this product can be found below, along with publications, customer reviews and Q&amp;As</p>

#### Properties

<b>Form</b>	Liquid
<b>Storage instructions</b>	Shipped at 4°C. Store at +4°C short term (1-2 weeks). Upon delivery aliquot. Store at -20°C or -80°C. Avoid freeze / thaw cycle.
<b>Storage buffer</b>	Constituents: 0.1% BSA, 99% PBS
<b>Purity</b>	Immunogen affinity purified
<b>Clonality</b>	Polyclonal

Applications

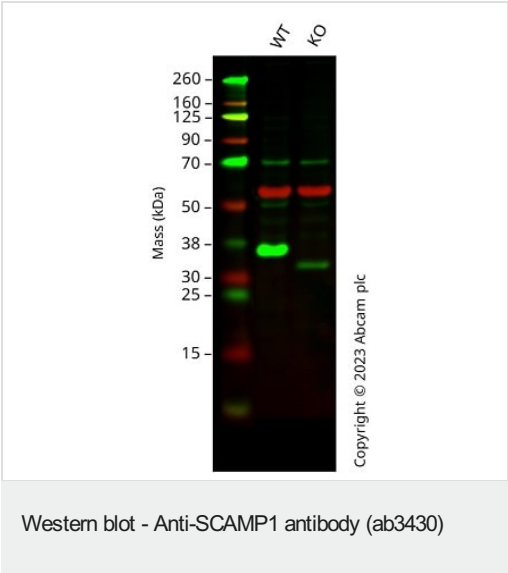
**The Abpromise guarantee** Our **Abpromise guarantee** covers the use of ab3430 in the following tested applications. The application notes include recommended starting dilutions; optimal dilutions/concentrations should be determined by the end user.

Application	Abreviews	Notes
WB		Use a concentration of 1 - 2 µg/ml. Detects a band of approximately 31 kDa (predicted molecular weight: 38 kDa). By Western blot, this antibody detects an ~31 kDa protein representing SCAMP 1 rat brain homogenate.

Target

Function	Functions in post-Golgi recycling pathways. Acts as a recycling carrier to the cell surface.
Tissue specificity	Widely expressed, with highest expression in brain.
Sequence similarities	Belongs to the SCAMP family.
Cellular localization	Golgi apparatus > trans-Golgi network membrane. Recycling endosome membrane.

Images



**All lanes :** Anti-SCAMP1 antibody (ab3430) at 1 µg/ml

**Lane 1 :** Wild-type HeLa cell lysate

**Lane 2 :** SCAMP1 knockout HeLa cell lysate

Lysates/proteins at 20 µg per lane.

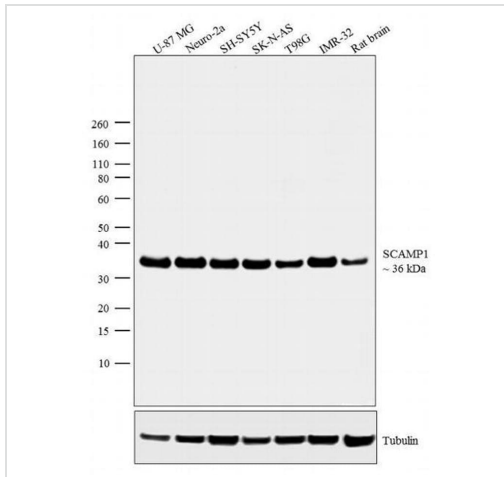
**Predicted band size:** 38 kDa

**Observed band size:** 36 kDa

**Lanes 1 - 2:** Merged signal (red and green). Green - ab3430 observed at 36 kDa. Red - loading control, **ab7291** (Mouse anti-Alpha Tubulin [DM1A]) observed at 55 kDa.

ab3430 was shown to react with SCAMP1 in wild-type HeLa cells in western blot. The bands observed in SCAMP1 knockout cell line **ab265567** (SCAMP1 knockout cell lysate **ab258184**) below 36 kDa may represent truncated forms and cleaved fragments. This has not been investigated further. HeLa wild-type and SCAMP1

knockout cell lysates were subjected to SDS-PAGE. Membranes were blocked in fluorescent western blot (TBS-based) blocking solution before incubation with ab3430 and **ab7291** (Mouse anti-Alpha Tubulin [DM1A]) overnight at 4°C at 1 µg/ml and a 1/20000 dilution respectively. Blots were incubated with Goat anti-Rabbit IgG H&L (IRDye® 800CW) preabsorbed (**ab216773**) and Goat anti-Mouse IgG H&L (IRDye® 680RD) preabsorbed (**ab216776**) secondary antibodies at 1/20000 dilution for 1 h at room temperature before imaging.



Western blot - Anti-SCAMP1 antibody (ab3430)

**All lanes :** Anti-SCAMP1 antibody (ab3430) at 2 µg/ml

**Lane 1 :** U-87MG (Human primary glioblastoma cell line) lysate

**Lane 2 :** Neuro-2a (Mouse brain) lysate

**Lane 3 :** SH-SY5Y (Human derived cell line) lysate

**Lane 4 :** SK-N-AS (Human neuroblastoma cell line) lysate

**Lane 5 :** T98G (Glioblastoma cell line) lysate

**Lane 6 :** IMR-32 (Human neuroblastoma cell line) lysate

**Lane 7 :** Rat brain tissue

Lysates/proteins at 30 µg per lane.

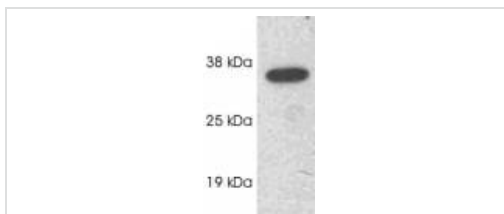
### Secondary

**All lanes :** Goat anti-Rabbit IgG (H+L), HRP conjugate at 1/4000 dilution

**Predicted band size:** 38 kDa

**Observed band size:** 36 kDa

**Blocking buffer:** 5% Milk.



Western blot - Anti-SCAMP1 antibody (ab3430)

Western blot detection of SCAMP1 on rat brain extract using ab3430.

**Please note:** All products are "FOR RESEARCH USE ONLY. NOT FOR USE IN DIAGNOSTIC PROCEDURES"

## **Our Abpromise to you: Quality guaranteed and expert technical support**

---

- Replacement or refund for products not performing as stated on the datasheet
- Valid for 12 months from date of delivery
- Response to your inquiry within 24 hours
  
- We provide support in Chinese, English, French, German, Japanese and Spanish
- Extensive multi-media technical resources to help you
- We investigate all quality concerns to ensure our products perform to the highest standards

If the product does not perform as described on this datasheet, we will offer a refund or replacement. For full details of the Abpromise, please visit <https://www.abcam.com/abpromise> or contact our technical team.

## **Terms and conditions**

---

- Guarantee only valid for products bought direct from Abcam or one of our authorized distributors