




## Product datasheet

# Anti-SCLY antibody - C-terminal ab190983

★★★★★ [1 Abreviews](#) [1 Image](#)

### Overview

---

<b>Product name</b>	Anti-SCLY antibody - C-terminal
<b>Description</b>	Rabbit polyclonal to SCLY - C-terminal
<b>Host species</b>	Rabbit
<b>Tested applications</b>	<b>Suitable for:</b> WB
<b>Species reactivity</b>	<b>Reacts with:</b> Human <b>Predicted to work with:</b> Cow 
<b>Immunogen</b>	Synthetic peptide corresponding to Human SCLY aa 400 to the C-terminus (C terminal). Database link: <a href="#">Q96I15</a>  <a href="#">Run BLAST with</a>  <a href="#">Run BLAST with</a>
<b>Positive control</b>	U87, HeLa, 293T, MCF-7, COLO320 and HE1080 cell lysates.
<b>General notes</b>	<p>The Life Science industry has been in the grips of a reproducibility crisis for a number of years. Abcam is leading the way in addressing this with our range of recombinant monoclonal antibodies and knockout edited cell lines for gold-standard validation. Please check that this product meets your needs before purchasing.</p> <p>If you have any questions, special requirements or concerns, please send us an inquiry and/or contact our Support team ahead of purchase. Recommended alternatives for this product can be found below, along with publications, customer reviews and Q&amp;As</p>

### Properties

---

<b>Form</b>	Liquid
<b>Storage instructions</b>	Shipped at 4°C. Store at +4°C short term (1-2 weeks). Upon delivery aliquot. Store at -20°C long term. Avoid freeze / thaw cycle.
<b>Storage buffer</b>	Preservatives: 0.025% Thimerosal (merthiolate), 0.025% Sodium azide Constituents: 2.5% BSA, 0.45% Sodium chloride, 0.1% Dibasic monohydrogen sodium phosphate
<b>Purity</b>	Immunogen affinity purified
<b>Clonality</b>	Polyclonal
<b>Isotype</b>	IgG

## Applications

### The Abpromise guarantee

Our **Abpromise guarantee** covers the use of ab190983 in the following tested applications.

The application notes include recommended starting dilutions; optimal dilutions/concentrations should be determined by the end user.

Application	Abreviews	Notes
WB		Use a concentration of 0.1 - 0.5 µg/ml. Predicted molecular weight: 48 kDa. The detection limit for SCLY is approximately 0.5ng/lane under reducing conditions.

## Target

### Function

Catalyzes the decomposition of L-selenocysteine to L-alanine and elemental selenium.

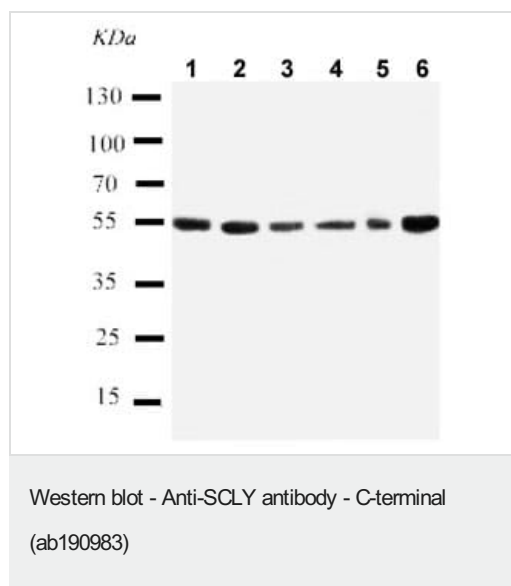
### Sequence similarities

Belongs to the class-V pyridoxal-phosphate-dependent aminotransferase family.

### Cellular localization

Cytoplasm > cytosol.

## Images



**All lanes :** Anti-SCLY antibody - C-terminal (ab190983) at 0.5 µg/ml

**Lane 1 :** U87 cell lysate

**Lane 2 :** HeLa cell lysate

**Lane 3 :** 293T cell lysate

**Lane 4 :** MCF-7 cell lysate

**Lane 5 :** COLO320 cell lysate

**Lane 6 :** HE1080 cell lysate

**Predicted band size:** 48 kDa

**Please note:** All products are "FOR RESEARCH USE ONLY. NOT FOR USE IN DIAGNOSTIC PROCEDURES"

## Our Abpromise to you: Quality guaranteed and expert technical support

- Replacement or refund for products not performing as stated on the datasheet
- Valid for 12 months from date of delivery
- Response to your inquiry within 24 hours
- We provide support in Chinese, English, French, German, Japanese and Spanish
- Extensive multi-media technical resources to help you

- We investigate all quality concerns to ensure our products perform to the highest standards

If the product does not perform as described on this datasheet, we will offer a refund or replacement. For full details of the Abpromise, please visit <https://www.abcam.com/abpromise> or contact our technical team.

### **Terms and conditions**

---

- Guarantee only valid for products bought direct from Abcam or one of our authorized distributors