

Anti-SCML2 antibody [SCMAD14A] ab51506

[1 References](#) [1 Image](#)

Overview

Product name	Anti-SCML2 antibody [SCMAD14A]
Description	Mouse monoclonal [SCMAD14A] to SCML2
Host species	Mouse
Tested applications	Suitable for: WB
Species reactivity	Reacts with: Mouse, Rat, Human
Immunogen	Recombinant fragment, C terminal. (Human)
Positive control	HeLa Whole cell lysate, NIH3T3 whole cell lysate, and F2408 whole cell lysate.
General notes	<p>The Life Science industry has been in the grips of a reproducibility crisis for a number of years. Abcam is leading the way in addressing this with our range of recombinant monoclonal antibodies and knockout edited cell lines for gold-standard validation. Please check that this product meets your needs before purchasing.</p> <p>If you have any questions, special requirements or concerns, please send us an inquiry and/or contact our Support team ahead of purchase. Recommended alternatives for this product can be found below, along with publications, customer reviews and Q&As</p>

Properties

Form	Liquid
Storage instructions	Shipped at 4°C. Store at +4°C short term (1-2 weeks). Upon delivery aliquot. Store at -20°C long term.
Storage buffer	<p>pH: 7.40</p> <p>Preservative: 0.05% Sodium azide</p> <p>Constituents: 0.812% Sodium chloride, 0.0225% Potassium chloride, 0.0204% Monobasic dihydrogen potassium phosphate, 0.1136% Dibasic monohydrogen sodium phosphate, 1% BSA, PBS</p>
Purity	Protein G purified
Purification notes	ab51506 purified using protein G column chromatography from culture supernatant of hybridoma cultured in a medium containing bovine IgG-depleted (approximately 95%) fetal bovine serum.
Clonality	Monoclonal
Clone number	SCMAD14A

Isotype

IgG1

Applications

The Abpromise guarantee

Our **Abpromise guarantee** covers the use of ab51506 in the following tested applications.

The application notes include recommended starting dilutions; optimal dilutions/concentrations should be determined by the end user.

Application	Abreviews	Notes
WB		1/200. Detects a band of approximately 100 kDa (predicted molecular weight: 77.3 kDa).

Target

Function

Putative Polycomb group (PcG) protein. PcG proteins act by forming multiprotein complexes, which are required to maintain the transcriptionally repressive state of homeotic genes throughout development.

Tissue specificity

Highly expressed in placenta, thymus and testis. Detected at lower levels in brain, liver, skeletal muscle, pancreas and ovary.

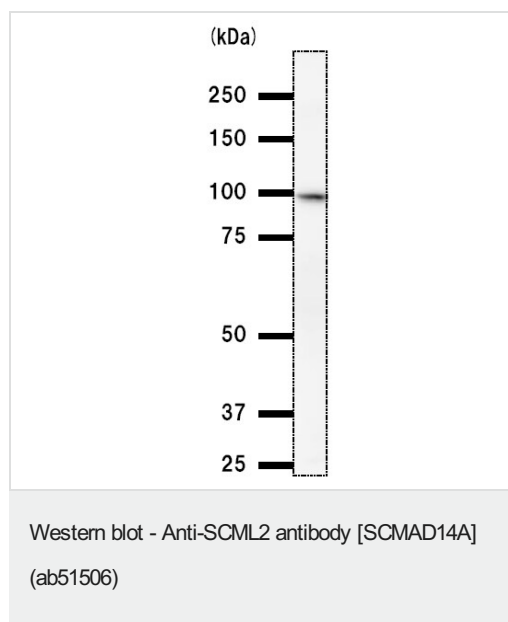
Sequence similarities

Belongs to the SCM family.
Contains 2 MBT repeats.
Contains 1 SAM (sterile alpha motif) domain.

Cellular localization

Nucleus.

Images



Anti-SCML2 antibody [SCMAD14A] (ab51506) at 1/200 dilution +
HeLa whole cell lysate at 25 µg

Secondary

Mouse IgG antibody at 1/2500 dilution

Predicted band size: 77.3 kDa

Observed band size: 100 kDa

Same results obtained using NIH3T3 whole cell lysate, and F2408 whole cell lysate.

Please note: All products are "FOR RESEARCH USE ONLY. NOT FOR USE IN DIAGNOSTIC PROCEDURES"

Our Abpromise to you: Quality guaranteed and expert technical support

- Replacement or refund for products not performing as stated on the datasheet
- Valid for 12 months from date of delivery
- Response to your inquiry within 24 hours

- We provide support in Chinese, English, French, German, Japanese and Spanish
- Extensive multi-media technical resources to help you
- We investigate all quality concerns to ensure our products perform to the highest standards

If the product does not perform as described on this datasheet, we will offer a refund or replacement. For full details of the Abpromise, please visit <https://www.abcam.com/abpromise> or contact our technical team.

Terms and conditions

- Guarantee only valid for products bought direct from Abcam or one of our authorized distributors