

## Product datasheet

# Anti-SCRIBBLE antibody [EPR4140(2)] ab125080

**KO VALIDATED** Recombinant RabMAb<sup>®</sup>

4 Images

### Overview

<b>Product name</b>	Anti-SCRIBBLE antibody [EPR4140(2)]
<b>Description</b>	Rabbit monoclonal [EPR4140(2)] to SCRIBBLE
<b>Host species</b>	Rabbit
<b>Tested applications</b>	<b>Suitable for:</b> WB, Flow Cyt (Intra) <b>Unsuitable for:</b> IHC-P or IP
<b>Species reactivity</b>	<b>Reacts with:</b> Human <b>Does not react with:</b> Mouse, Rat
<b>Immunogen</b>	Synthetic peptide within Human SCRIBBLE aa 1550-1650 (C terminal). The exact sequence is proprietary.
<b>Positive control</b>	293T, HeLa and MCF7 cell lysates; permeabilized 293T cells.
<b>General notes</b>	<p>This product is a recombinant monoclonal antibody, which offers several advantages including:</p> <ul style="list-style-type: none"><li>- High batch-to-batch consistency and reproducibility</li><li>- Improved sensitivity and specificity</li><li>- Long-term security of supply</li><li>- Animal-free production</li></ul> <p>For more information <a href="#">see here</a>.</p> <p>Our RabMAb<sup>®</sup> technology is a patented hybridoma-based technology for making rabbit monoclonal antibodies. For details on our patents, please refer to <a href="#">RabMAb<sup>®</sup> patents</a>.</p>

### Properties

<b>Form</b>	Liquid
<b>Storage instructions</b>	Shipped at 4°C. Store at -20°C. Stable for 12 months at -20°C.
<b>Storage buffer</b>	pH: 7.2 Preservative: 0.05% Sodium azide Constituents: 0.1% BSA, 40% Glycerol (glycerin, glycerine), 9.85% Tris glycine, 50% Tissue culture supernatant
<b>Purity</b>	Protein A purified
<b>Clonality</b>	Monoclonal
<b>Clone number</b>	EPR4140(2)

Isotype

IgG

## Applications

**The Abpromise guarantee** Our **Abpromise guarantee** covers the use of ab125080 in the following tested applications. The application notes include recommended starting dilutions; optimal dilutions/concentrations should be determined by the end user.

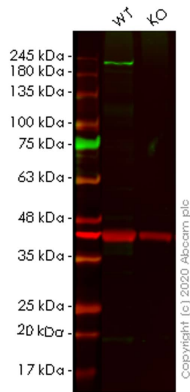
Application	Abreviews	Notes
WB		1/1000 - 1/10000. Detects a band of approximately 250 kDa (predicted molecular weight: 175 kDa).
Flow Cyt (Intra)		1/100 - 1/500. <b>ab172730</b> - Rabbit monoclonal IgG, is suitable for use as an isotype control with this antibody.

**Application notes** Is unsuitable for IHC-P or IP.

## Target

<b>Function</b>	Scaffold protein involved in different aspects of polarized cells differentiation regulating epithelial and neuronal morphogenesis. Most probably functions in the establishment of apico-basal cell polarity. May function in cell proliferation regulating progression from G1 to S phase and as a positive regulator of apoptosis for instance during acinar morphogenesis of the mammary epithelium. May also function in cell migration and adhesion and hence regulate cell invasion through MAPK signaling. May play a role in exocytosis and in the targeting synaptic vesicles to synapses. Functions as an activator of Rac GTPase activity.
<b>Tissue specificity</b>	Expressed in kidney, skeletal muscles, liver, lung, breast, intestine, placenta and skin mainly in epithelial cells (at protein level).
<b>Sequence similarities</b>	Belongs to the LAP (LRR and PDZ) protein family. Contains 16 LRR (leucine-rich) repeats. Contains 4 PDZ (DHR) domains.
<b>Post-translational modifications</b>	Ubiquitinated; targeted for UBE3A-dependent multiubiquitination in the presence of high-risk HPV E6 proteins and degraded.
<b>Cellular localization</b>	Cell membrane. Cell junction > adherens junction. Cytoplasm. Targeting to cell-cell junctions which is CDH1-dependent is required for the pro-apoptotic activity. Localizes to neuronal post- and pre-synaptic regions.

## Images



Western blot - Anti-SCRIBBLE antibody  
[EPR4140(2)] (ab125080)

**All lanes** : Anti-SCRIBBLE antibody [EPR4140(2)] (ab125080) at 1/500 dilution

**Lane 1** : Wild-type HeLa cell lysate

**Lane 2** : SCRIB knockout HeLa cell lysate

Lysates/proteins at 20 µg per lane.

### Secondary

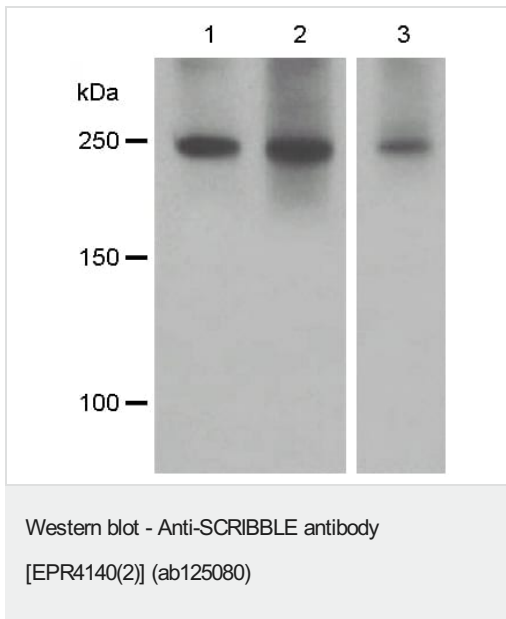
**All lanes** : Goat anti-Rabbit IgG H&L (IRDye® 800CW) preadsorbed (**ab216773**) at 1/10000 dilution

**Predicted band size:** 175 kDa

**Observed band size:** 240 kDa

**Lanes 1-2:** Merged signal (red and green). Green - ab125080 observed at 240 kDa. Red - loading control **ab8245** observed at 36 kDa.

ab125080 Anti-SCRIBBLE antibody [EPR4140(2)] was shown to specifically react with SCRIBBLE in wild-type HeLa cells. Loss of signal was observed when knockout cell line **ab265190** (knockout cell lysate **ab257660**) was used. Wild-type and SCRIBBLE knockout samples were subjected to SDS-PAGE. ab125080 and Anti-GAPDH antibody [6C5] - Loading Control (**ab8245**) were incubated overnight at 4°C at 1 in 500 dilution and 1 in 20000 dilution respectively. Blots were developed with Goat anti-Rabbit IgG H&L (IRDye® 800CW) preadsorbed (**ab216773**) and Goat anti-Mouse IgG H&L (IRDye® 680RD) preadsorbed (**ab216776**) secondary antibodies at 1 in 20000 dilution for 1 hour at room temperature before imaging.



**All lanes :** Anti-SCRIBBLE antibody [EPR4140(2)] (ab125080) at 1/1000 dilution

**Lane 1 :** 293T cell lysate

**Lane 2 :** HeLa cell lysate

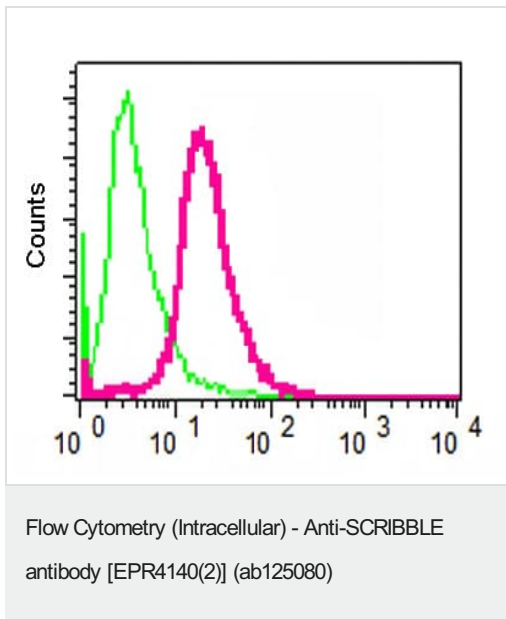
**Lane 3 :** MCF7 cell lysate

Lysates/proteins at 10 µg per lane.

**Secondary**





**All lanes :** Goat anti-Rabbit HRP at 1/2000 dilution

**Predicted band size:** 175 kDa



ab125080 at 1/100, staining SCRIBBLE in permeabilized 293T cells by intracellular flow cytometry (red), compared with a negative control Rabbit IgG antibody (green).

Why choose a recombinant antibody?

 <p><b>Research with confidence</b> Consistent and reproducible results</p>	 <p><b>Long-term and scalable supply</b> Recombinant technology</p>
 <p><b>Success from the first experiment</b> Confirmed specificity</p>	 <p><b>Ethical standards compliant</b> Animal-free production</p>

Anti-SCRIBBLE antibody [EPR4140(2)] (ab125080)

**Please note:** All products are "FOR RESEARCH USE ONLY. NOT FOR USE IN DIAGNOSTIC PROCEDURES"

### Our Abpromise to you: Quality guaranteed and expert technical support

---

- Replacement or refund for products not performing as stated on the datasheet
- Valid for 12 months from date of delivery
- Response to your inquiry within 24 hours
- We provide support in Chinese, English, French, German, Japanese and Spanish
- Extensive multi-media technical resources to help you
- We investigate all quality concerns to ensure our products perform to the highest standards

If the product does not perform as described on this datasheet, we will offer a refund or replacement. For full details of the Abpromise, please visit <https://www.abcam.com/abpromise> or contact our technical team.

### Terms and conditions

---

- Guarantee only valid for products bought direct from Abcam or one of our authorized distributors