

Product datasheet

Anti-SCRN1 antibody ab105355

[1 References](#) [3 Images](#)

Overview

Product name	Anti-SCRN1 antibody
Description	Rabbit polyclonal to SCRN1
Host species	Rabbit
Tested applications	Suitable for: ICC/IF, WB, IHC-P
Species reactivity	Reacts with: Human
Immunogen	20 amino acid synthetic peptide to a region within the C-terminus of Human SCRN1 (NP_001138985).
Positive control	Human kidney tissue
General notes	<p>The Life Science industry has been in the grips of a reproducibility crisis for a number of years. Abcam is leading the way in addressing this with our range of recombinant monoclonal antibodies and knockout edited cell lines for gold-standard validation. Please check that this product meets your needs before purchasing.</p> <p>If you have any questions, special requirements or concerns, please send us an inquiry and/or contact our Support team ahead of purchase. Recommended alternatives for this product can be found below, along with publications, customer reviews and Q&As</p>

Properties

Form	Liquid
Storage instructions	Shipped at 4°C. Store at 4°C (stable for up to 12 months). Store at -20°C or -80°C.
Storage buffer	pH: 7.2 Preservative: 0.02% Sodium azide Constituent: PBS
Purity	Immunogen affinity purified
Clonality	Polyclonal
Isotype	IgG

Applications

The Abpromise guarantee Our **Abpromise guarantee** covers the use of ab105355 in the following tested applications.

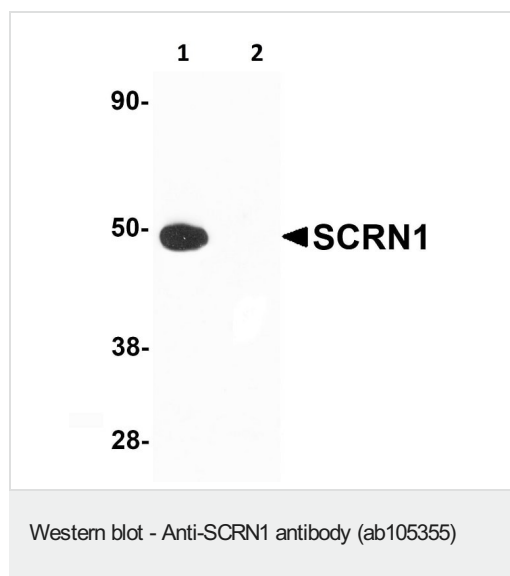
The application notes include recommended starting dilutions; optimal dilutions/concentrations should be determined by the end user.

Application	Abreviews	Notes
ICC/IF		Use a concentration of 20 µg/ml.
WB		Use a concentration of 1 - 2 µg/ml. Predicted molecular weight: 46 kDa.
IHC-P		Use a concentration of 5 µg/ml.

Target

Function	Regulates exocytosis in mast cells. Increases both the extent of secretion and the sensitivity of mast cells to stimulation with calcium.
Sequence similarities	Belongs to the peptidase C69 family. Secernin subfamily.
Cellular localization	Cytoplasm.

Images



All lanes : Anti-SCRIN1 antibody (ab105355) at 1 µg/ml

Lane 1 : Human kidney tissue lysate in the absence of blocking peptide

Lane 2 : Human kidney tissue lysate in the presence of blocking peptide

Predicted band size: 46 kDa



ab105355, at 5ug/ml, staining SCRIN1 in Human kidney tissue by immunohistochemistry.

Immunocytochemistry/ Immunofluorescence - Anti-
SCRN1 antibody (ab105355)

Immunofluorescence of SCRN1 in Human Kidney cells using
ab105355 at 20 ug/ml.

Please note: All products are "FOR RESEARCH USE ONLY. NOT FOR USE IN DIAGNOSTIC PROCEDURES"

Our Abpromise to you: Quality guaranteed and expert technical support

- Replacement or refund for products not performing as stated on the datasheet
- Valid for 12 months from date of delivery
- Response to your inquiry within 24 hours
- We provide support in Chinese, English, French, German, Japanese and Spanish
- Extensive multi-media technical resources to help you
- We investigate all quality concerns to ensure our products perform to the highest standards

If the product does not perform as described on this datasheet, we will offer a refund or replacement. For full details of the Abpromise, please visit <https://www.abcam.com/abpromise> or contact our technical team.

Terms and conditions

- Guarantee only valid for products bought direct from Abcam or one of our authorized distributors