

Anti-SCUBE1 antibody ab105358

[3 References](#) [3 Images](#)

Overview

Product name	Anti-SCUBE1 antibody
Description	Rabbit polyclonal to SCUBE1
Host species	Rabbit
Specificity	ab105358 is predicted to not crossreact with other SCUBE members.
Tested applications	Suitable for: WB, ICC
Species reactivity	Reacts with: Human
Immunogen	A 14 amino acid peptide near the center of Human SCUBE1 (NP_766638).
Positive control	WB: Daudi cell lysate ICC: Daudi cells
General notes	<p>The Life Science industry has been in the grips of a reproducibility crisis for a number of years. Abcam is leading the way in addressing this with our range of recombinant monoclonal antibodies and knockout edited cell lines for gold-standard validation. Please check that this product meets your needs before purchasing.</p> <p>If you have any questions, special requirements or concerns, please send us an inquiry and/or contact our Support team ahead of purchase. Recommended alternatives for this product can be found below, along with publications, customer reviews and Q&As</p>

Properties

Form	Liquid
Storage instructions	Shipped at 4°C. Store at +4°C.
Storage buffer	pH: 7.2 Preservative: 0.02% Sodium azide Constituent: PBS
Purity	Immunogen affinity purified
Clonality	Polyclonal
Isotype	IgG

Applications

The **Abpromise guarantee** Our **Abpromise guarantee** covers the use of ab105358 in the following tested applications.

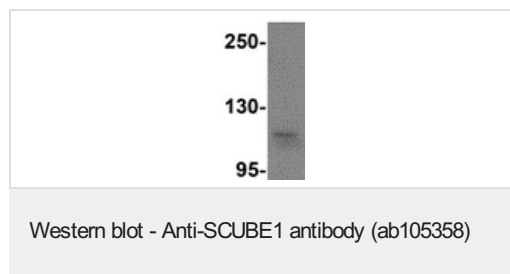
The application notes include recommended starting dilutions; optimal dilutions/concentrations should be determined by the end user.

Application	Abreviews	Notes
WB		Use a concentration of 1 - 2 µg/ml. Predicted molecular weight: 108 kDa.
ICC		Use a concentration of 20 µg/ml.

Target

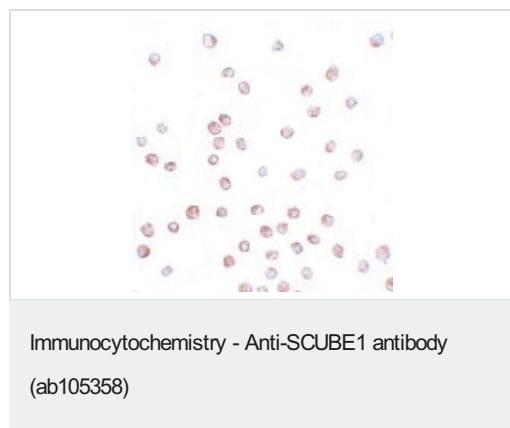
Function	Could function as an adhesive molecule and its matrix bound and soluble fragments may play a critical role in vascular biology.
Tissue specificity	Detected in endothelial cells. Highly expressed in platelets. Stored in platelet alpha granules, and transferred to the cell surface upon activation and aggregation. A smaller form, probably produced by limited proteolysis, after being released from the storage granules, is associated with thrombus and localized with the subendothelial matrices in atherosclerotic plaques.
Sequence similarities	Contains 1 CUB domain. Contains 9 EGF-like domains.
Post-translational modifications	N-glycosylated. Could be proteolytically cleaved to release a smaller active fragment.
Cellular localization	Secreted. Cell membrane.

Images



Anti-SCUBE1 antibody (ab105358) at 1 µg/ml + Daudi cell lysate at 15 µg

Predicted band size: 108 kDa



Immunocytochemical analysis of SCUBE1 in Daudi cells using ab105358 at 20 µg/ml.

Immunocytochemistry - Anti-SCUBE1 antibody
(ab105358)

Immunofluorescence of SCUBE1 in Daudi cells using ab105358 at
20 ug/ml.

Please note: All products are "FOR RESEARCH USE ONLY. NOT FOR USE IN DIAGNOSTIC PROCEDURES"

Our Abpromise to you: Quality guaranteed and expert technical support

- Replacement or refund for products not performing as stated on the datasheet
- Valid for 12 months from date of delivery
- Response to your inquiry within 24 hours
- We provide support in Chinese, English, French, German, Japanese and Spanish
- Extensive multi-media technical resources to help you
- We investigate all quality concerns to ensure our products perform to the highest standards

If the product does not perform as described on this datasheet, we will offer a refund or replacement. For full details of the Abpromise, please visit <https://www.abcam.com/abpromise> or contact our technical team.

Terms and conditions

- Guarantee only valid for products bought direct from Abcam or one of our authorized distributors