

# Anti-SCYL2 antibody ab103819

[1 References](#) [2 Images](#)

## Overview

<b>Product name</b>	Anti-SCYL2 antibody
<b>Description</b>	Rabbit polyclonal to SCYL2
<b>Host species</b>	Rabbit
<b>Tested applications</b>	<b>Suitable for:</b> WB
<b>Species reactivity</b>	<b>Reacts with:</b> Human
<b>Immunogen</b>	Recombinant full length protein within Human SCYL2 aa 1-950. The exact immunogen sequence used to generate this antibody is proprietary information. If additional detail on the immunogen is needed to determine the suitability of the antibody for your needs, please <b><a href="#">contact</a></b> our Scientific Support team to discuss your requirements.
<b>Positive control</b>	Jurkat cell line lysate. SCYL2 transfected 293T cell line lysate.
<b>General notes</b>	<p>The Life Science industry has been in the grips of a reproducibility crisis for a number of years. Abcam is leading the way in addressing this with our range of recombinant monoclonal antibodies and knockout edited cell lines for gold-standard validation. Please check that this product meets your needs before purchasing.</p> <p>If you have any questions, special requirements or concerns, please send us an inquiry and/or contact our Support team ahead of purchase. Recommended alternatives for this product can be found below, along with publications, customer reviews and Q&amp;As</p>

## Properties

<b>Form</b>	Liquid
<b>Storage instructions</b>	Shipped at 4°C. Upon delivery aliquot and store at -20°C. Avoid repeated freeze / thaw cycles.
<b>Storage buffer</b>	pH: 7.40 Constituent: 100% PBS
<b>Purity</b>	Protein A purified
<b>Clonality</b>	Polyclonal
<b>Isotype</b>	IgG

## Applications

## The Abpromise guarantee

Our **Abpromise guarantee** covers the use of ab103819 in the following tested applications.

The application notes include recommended starting dilutions; optimal dilutions/concentrations should be determined by the end user.

Application	Abreviews	Notes
WB		Use a concentration of 1 µg/ml. Predicted molecular weight: 104 kDa.

## Target

### Function

Component of AP2-containing clathrin coated structures at the plasma membrane or of endocytic coated vesicles. According to PubMed:15809293, probable serine/threonine-protein kinase that phosphorylates, in vitro, the beta2-subunit of the plasma membrane adapter complex AP2 and other proteins in presence of poly-L-lysine. According to PubMed:16914521, has no detectable kinase activity in vitro. May regulate clathrin-dependent trafficking between the TGN and/or the endosomal system.

### Sequence similarities

Belongs to the protein kinase superfamily.  
Contains 1 HEAT repeat.  
Contains 1 protein kinase domain.

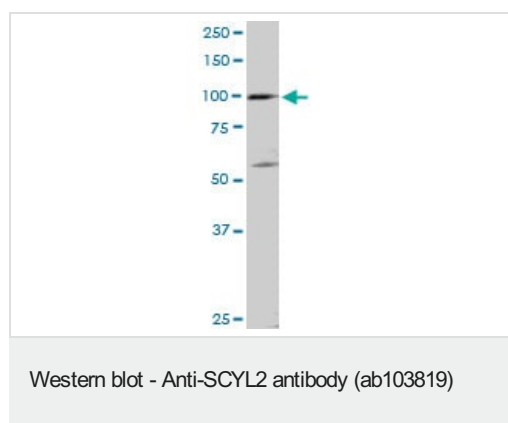
### Post-translational modifications

According to PubMed:15809293, autophosphorylated in presence of poly-L-lysine.

### Cellular localization

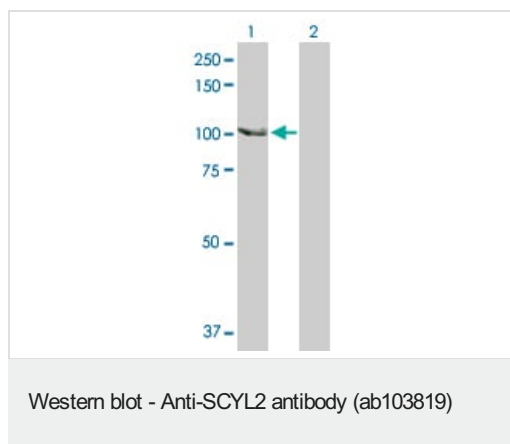
Cytoplasm > perinuclear region. Cytoplasmic vesicle > clathrin-coated vesicle. Golgi apparatus > trans-Golgi network membrane. Endosome membrane. According to PubMed:15809293, plasma membrane-associated in clathrin-coated vesicles. According to PubMed:16914521, colocalizes to the trans-Golgi network (TGN) and to endosomal membranes with clathrin, transferrin and plasma membrane adapter AP1 and AP3 complexes.

## Images



Anti-SCYL2 antibody (ab103819) at 1 µg/ml + Jurkat cell lysate at 50 µg

**Predicted band size:** 104 kDa



**All lanes :** Anti-SCYL2 antibody (ab103819) at 1 µg/ml

**Lane 1 :** SCYL2 transfected 293T cell line lysate

**Lane 2 :** Non transfected 293T cell line lysate

Lysates/proteins at 25 µg per lane.

**Predicted band size:** 104 kDa

**Please note:** All products are "FOR RESEARCH USE ONLY. NOT FOR USE IN DIAGNOSTIC PROCEDURES"

### Our Abpromise to you: Quality guaranteed and expert technical support

---

- Replacement or refund for products not performing as stated on the datasheet
- Valid for 12 months from date of delivery
- Response to your inquiry within 24 hours
- We provide support in Chinese, English, French, German, Japanese and Spanish
- Extensive multi-media technical resources to help you
- We investigate all quality concerns to ensure our products perform to the highest standards

If the product does not perform as described on this datasheet, we will offer a refund or replacement. For full details of the Abpromise, please visit <https://www.abcam.com/abpromise> or contact our technical team.

### Terms and conditions

---

- Guarantee only valid for products bought direct from Abcam or one of our authorized distributors