

Product datasheet

Anti-Seasonal and Swine H1N1 Neuraminidase antibody ab91645

[3 Images](#)

Overview

Product name	Anti-Seasonal and Swine H1N1 Neuraminidase antibody
Description	Rabbit polyclonal to Seasonal and Swine H1N1 Neuraminidase
Host species	Rabbit
Specificity	Recognizes the Neuraminidase from the both the Seasonal H1N1 Neuraminidase and Swine H1N1 Neuraminidase (A/California/14/2009 (H1N1)) in ELISA and WB. It will detect 2 ng of free peptide at 1 µg/mL.
Tested applications	Suitable for: ELISA, WB
Species reactivity	Reacts with: Influenza A virus (A/Georgia/20/2006(H1N1)), Influenza A virus (A/California/14/2009(H1N1))
Immunogen	Synthetic peptides from the Seasonal H1N1 Neuraminidase protein and the novel Swine H1N1 Neuraminidase protein (Genbank accession ACA33620 and ACQ76308).
Positive control	ELISA: Seasonal and Swine H1N1 Neuraminidase peptides, Swine H1N1 Neuraminidase recombinant protein. WB: Swine H1N1 Neuraminidase recombinant protein.
General notes	<p>The Life Science industry has been in the grips of a reproducibility crisis for a number of years. Abcam is leading the way in addressing this with our range of recombinant monoclonal antibodies and knockout edited cell lines for gold-standard validation. Please check that this product meets your needs before purchasing.</p> <p>If you have any questions, special requirements or concerns, please send us an inquiry and/or contact our Support team ahead of purchase. Recommended alternatives for this product can be found below, along with publications, customer reviews and Q&As</p>

Properties

Form	Liquid
Storage instructions	Shipped at 4°C. Store at +4°C.
Storage buffer	pH: 7.2 Preservative: 0.02% Sodium azide Constituent: PBS
Purity	Immunogen affinity purified

Clonality	Polyclonal
Isotype	IgG

Applications

The Abpromise guarantee Our **Abpromise guarantee** covers the use of ab91645 in the following tested applications. The application notes include recommended starting dilutions; optimal dilutions/concentrations should be determined by the end user.

Application	Abreviews	Notes
ELISA		
WB		

Application notes ELISA: Use at a concentration of 1 µg/ml.

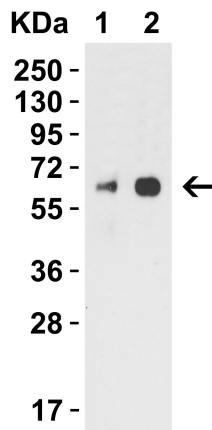
Not yet tested in other applications.
Optimal dilutions/concentrations should be determined by the end user.

Target

Relevance Influenza A virus is a major public health threat, killing more than 30,000 people per year in the USA. In early 2009, a novel swine-origin influenza A (H1N1) virus was identified in specimens obtained from patients in Mexico and the United States. Influenza A virus has one of sixteen possible Hemagglutinin (HA) surface proteins and one of nine possible neuraminidase (NA) surface proteins. The genetic make-up of this swine flu virus is unlike any other: it is an H1N1 strain that combines a triple assortment first identified in 1998 including human, swine, and avian influenza with two new pig H3N2 virus genes from Eurasia, themselves of recent human origin. The distinct antigenic properties of the new swine influenza virus compared with seasonal influenza A (H1N1) virus suggest that human immunity against new swine influenza virus is limited.

Cellular localization Cell Membrane

Images



Western blot - Anti-Seasonal and Swine H1N1
Neuraminidase antibody (ab91645)

All lanes : Anti-Seasonal and Swine H1N1 Neuraminidase
antibody (ab91645) at 2 µg/ml

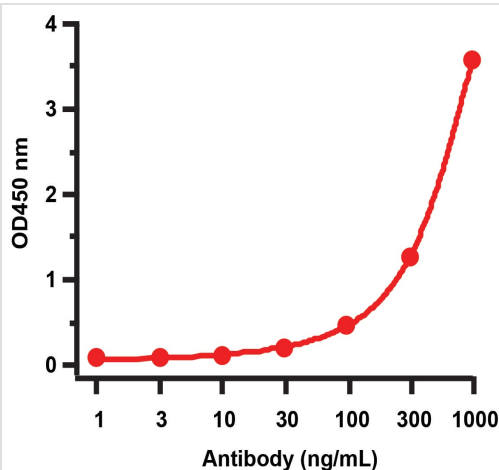
Lane 1 : 50 ng of Swine H1N1 Neuraminidase recombinant protein

Lane 2 : 100 ng of Swine H1N1 Neuraminidase recombinant
protein

Secondary

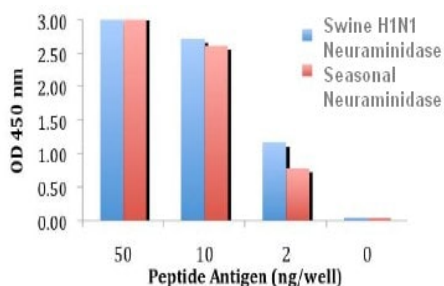
All lanes : Goat anti-rabbit IgG HRP conjugate at 1/10000 dilution

1h incubation at RT in 5% NFDM/TBST.



ELISA - Anti-Seasonal and Swine H1N1
Neuraminidase antibody (ab91645)

Validation with H1N1 NA Protein Coating Antigen: Swine H1N1
Neuraminidase recombinant protein, 2 µg/mL, incubated at 4°C
overnight. Detection Antibodies: ab91645, dilution: 1-1000 ng/mL,
incubated at RT for 1 hr. Secondary Antibodies: Goat anti-rabbit at
1/10000 dilution, incubated at RT for 1 hr.



ELISA - Anti-Seasonal and Swine H1N1
Neuraminidase antibody (ab91645)

ELISA using ab91645 at 1 µg/ml, detects 2 ng of free peptide
(Seasonal and Swine H1N1 Neuraminidase).

Please note: All products are "FOR RESEARCH USE ONLY. NOT FOR USE IN DIAGNOSTIC PROCEDURES"

Our Abpromise to you: Quality guaranteed and expert technical support

- Replacement or refund for products not performing as stated on the datasheet
- Valid for 12 months from date of delivery
- Response to your inquiry within 24 hours

- We provide support in Chinese, English, French, German, Japanese and Spanish
- Extensive multi-media technical resources to help you
- We investigate all quality concerns to ensure our products perform to the highest standards

If the product does not perform as described on this datasheet, we will offer a refund or replacement. For full details of the Abpromise, please visit <https://www.abcam.com/abpromise> or contact our technical team.

Terms and conditions

- Guarantee only valid for products bought direct from Abcam or one of our authorized distributors