


## Product datasheet

# Anti-SEC13L1 antibody ab155771

[2 Images](#)

### Overview

---

<b>Product name</b>	Anti-SEC13L1 antibody
<b>Description</b>	Rabbit polyclonal to SEC13L1
<b>Host species</b>	Rabbit
<b>Tested applications</b>	<b>Suitable for:</b> WB, IHC-P
<b>Species reactivity</b>	<b>Reacts with:</b> Human <b>Predicted to work with:</b> Mouse, Rat, Cow, Xenopus laevis, Zebrafish, Xenopus tropicalis 
<b>Immunogen</b>	Recombinant fragment, corresponding to a region within amino acids 112-322 of Human SEC13L1 (Uniprot ID: P55735).
<b>Positive control</b>	293T, A431, Jurkat and Raji whole cell lysates; Human U87 xenograft tissue.
<b>General notes</b>	<p>The Life Science industry has been in the grips of a reproducibility crisis for a number of years. Abcam is leading the way in addressing this with our range of recombinant monoclonal antibodies and knockout edited cell lines for gold-standard validation. Please check that this product meets your needs before purchasing.</p> <p>If you have any questions, special requirements or concerns, please send us an inquiry and/or contact our Support team ahead of purchase. Recommended alternatives for this product can be found below, along with publications, customer reviews and Q&amp;As</p>

### Properties

---

<b>Form</b>	Liquid
<b>Storage instructions</b>	Shipped at 4°C. Upon delivery aliquot. Store at -20°C or -80°C. Avoid freeze / thaw cycle.
<b>Storage buffer</b>	pH: 7.00 Preservative: 0.01% Thimerosal (merthiolate) Constituents: 1.21% Tris, 0.75% Glycine, 20% Glycerol (glycerin, glycerine)
<b>Purity</b>	Immunogen affinity purified
<b>Clonality</b>	Polyclonal
<b>Isotype</b>	IgG

### Applications

---

## The Abpromise guarantee

Our **Abpromise guarantee** covers the use of ab155771 in the following tested applications.

The application notes include recommended starting dilutions; optimal dilutions/concentrations should be determined by the end user.

Application	Abreviews	Notes
WB		1/500 - 1/3000. Predicted molecular weight: 35 kDa.
IHC-P		1/100 - 1/1000.

## Target

### Function

Functions as a component of the nuclear pore complex (NPC) and the COPII coat. At the endoplasmic reticulum, SEC13 is involved in the biogenesis of COPII-coated vesicles.

### Sequence similarities

Belongs to the WD repeat SEC13 family.  
Contains 6 WD repeats.

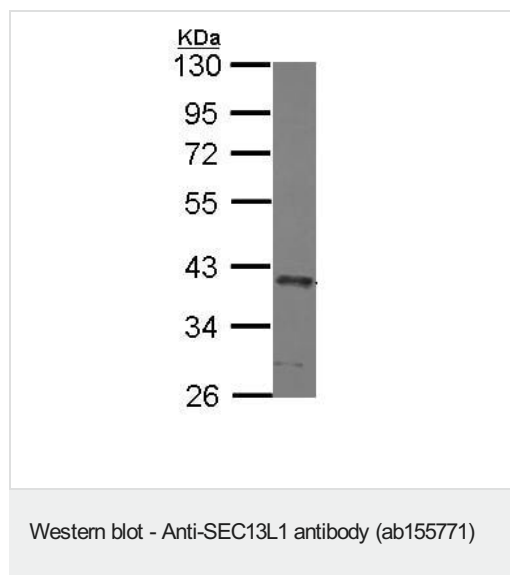
### Cellular localization

Cytoplasmic vesicle > COPII-coated vesicle membrane. Endoplasmic reticulum membrane.  
Nucleus > nuclear pore complex. In interphase, localizes at both sides of the NPC.

### Form

It is a constituent of the endoplasmic reticulum and the nuclear pore complex. Functions as a component of the nuclear pore complex (NPC) and the COPII coat. At the endoplasmic reticulum, SEC13 is involved in the biogenesis of COPII-coated vesicles. Cellular location: Cytoplasmic vesicle, Endoplasmic reticulum, Membrane, Nuclear pore complex, Nucleus.

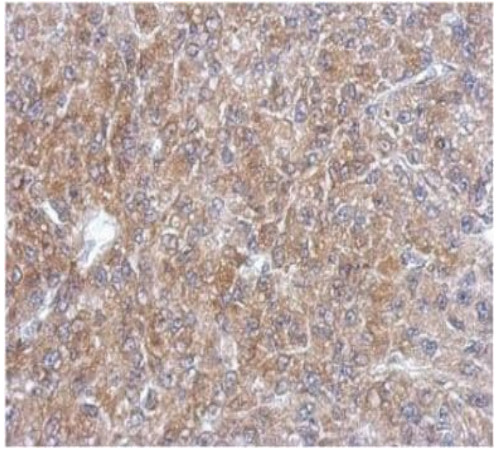
## Images



Anti-SEC13L1 antibody (ab155771) at 1/1000 dilution + A431 whole cell lysate at 30 µg

**Predicted band size:** 35 kDa

10% SDS PAGE



Immunohistochemical analysis of paraffin-embedded Human U87 xenograft tissue labeling SEC13L1 with ab155771 at 1/500 dilution.

Immunohistochemistry (Formalin/PFA-fixed paraffin-embedded sections) - Anti-SEC13L1 antibody (ab155771)

**Please note:** All products are "FOR RESEARCH USE ONLY. NOT FOR USE IN DIAGNOSTIC PROCEDURES"

### **Our Abpromise to you: Quality guaranteed and expert technical support**

---

- Replacement or refund for products not performing as stated on the datasheet
- Valid for 12 months from date of delivery
- Response to your inquiry within 24 hours
- We provide support in Chinese, English, French, German, Japanese and Spanish
- Extensive multi-media technical resources to help you
- We investigate all quality concerns to ensure our products perform to the highest standards

If the product does not perform as described on this datasheet, we will offer a refund or replacement. For full details of the Abpromise, please visit <https://www.abcam.com/abpromise> or contact our technical team.

### **Terms and conditions**

---

- Guarantee only valid for products bought direct from Abcam or one of our authorized distributors