




Product datasheet

Anti-SEC24B antibody ab122445

2 Images

Overview

Product name	Anti-SEC24B antibody
Description	Rabbit polyclonal to SEC24B
Host species	Rabbit
Tested applications	Suitable for: ICC/IF, IHC-P
Species reactivity	Reacts with: Human
Immunogen	antigen sequence: SFQGAASSAS HLHTSASQPY SSFVNHYNSP AMYSASSSVA SQGFPSTCGH YAMSTVSNAAYPSVSYPSLP AGDTYGQMFT SQNAPTVR, corresponding to amino acids 133-220 of Human SEC24B <div>  Run BLAST with  Run BLAST with  </div>
Positive control	IHC: Human kidney tissue ICC/IF: Human cell line A-431
General notes	<p>The Life Science industry has been in the grips of a reproducibility crisis for a number of years. Abcam is leading the way in addressing this with our range of recombinant monoclonal antibodies and knockout edited cell lines for gold-standard validation. Please check that this product meets your needs before purchasing.</p> <p>If you have any questions, special requirements or concerns, please send us an inquiry and/or contact our Support team ahead of purchase. Recommended alternatives for this product can be found below, along with publications, customer reviews and Q&As</p>

Properties

Form	Liquid
Storage instructions	Shipped at 4°C. Upon delivery aliquot and store at -20°C. Avoid repeated freeze / thaw cycles.
Storage buffer	pH: 7.20 Preservative: 0.02% Sodium azide Constituents: 40% Glycerol (glycerin, glycerine), 59% PBS
Purity	Immunogen affinity purified
Clonality	Polyclonal
Isotype	IgG

Applications

The Abpromise guarantee

Our **Abpromise guarantee** covers the use of ab122445 in the following tested applications.

The application notes include recommended starting dilutions; optimal dilutions/concentrations should be determined by the end user.

Application	Abreviews	Notes
ICC/IF		Use a concentration of 0.25 - 2 µg/ml.
IHC-P		1/200 - 1/500. Perform heat mediated antigen retrieval with citrate buffer pH 6 before commencing with IHC staining protocol.

Target

Function

Component of the COPII coat, that covers ER-derived vesicles involved in transport from the endoplasmic reticulum to the Golgi apparatus. COPII acts in the cytoplasm to promote the transport of secretory, plasma membrane, and vacuolar proteins from the endoplasmic reticulum to the Golgi complex.

Tissue specificity

Expressed in fibroblasts, hepatocytes, and lymphocytes.

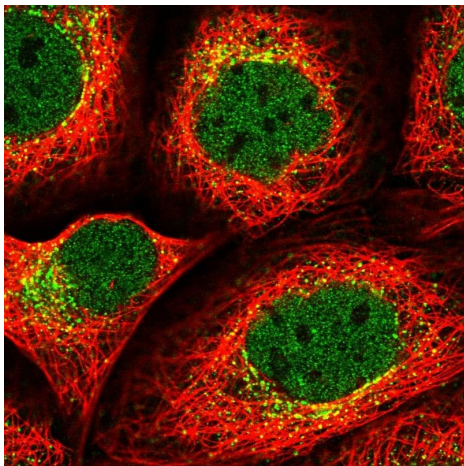
Sequence similarities

Belongs to the SEC23/SEC24 family. SEC24 subfamily.

Cellular localization

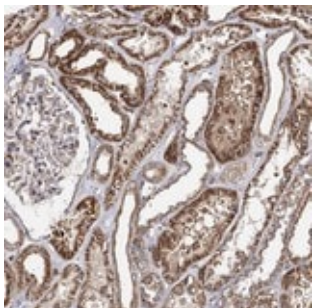
Cytoplasm. Cytoplasm > perinuclear region. Endoplasmic reticulum membrane. Golgi apparatus membrane. Golgi apparatus membrane.

Images



Immunocytochemistry/immunofluorescence analysis of human cell line A-431 labelling SEC24B with ab122445 at 2 µg/mL shows localization to nucleoplasm & vesicles.

Immunocytochemistry/ Immunofluorescence - Anti-SEC24B antibody (ab122445)



ab122445, at 1/200 dilution, staining SEC24B in paraffin-embedded Human kidney tissue by Immunohistochemistry.

Immunohistochemistry (Formalin/PFA-fixed paraffin-embedded sections) - Anti-SEC24B antibody (ab122445)

Please note: All products are "FOR RESEARCH USE ONLY. NOT FOR USE IN DIAGNOSTIC PROCEDURES"

Our Abpromise to you: Quality guaranteed and expert technical support

- Replacement or refund for products not performing as stated on the datasheet
- Valid for 12 months from date of delivery
- Response to your inquiry within 24 hours
- We provide support in Chinese, English, French, German, Japanese and Spanish
- Extensive multi-media technical resources to help you
- We investigate all quality concerns to ensure our products perform to the highest standards

If the product does not perform as described on this datasheet, we will offer a refund or replacement. For full details of the Abpromise, please visit <https://www.abcam.com/abpromise> or contact our technical team.

Terms and conditions

- Guarantee only valid for products bought direct from Abcam or one of our authorized distributors