


Anti-Selenophosphate synthetase 1 antibody ab153923

1 Image

Overview

Product name	Anti-Selenophosphate synthetase 1 antibody
Description	Rabbit polyclonal to Selenophosphate synthetase 1
Host species	Rabbit
Tested applications	Suitable for: WB
Species reactivity	Reacts with: Human Predicted to work with: Mouse, Rat, Chicken, Cow, Dog, Xenopus laevis, Monkey, Zebrafish, Xenopus tropicalis 
Immunogen	Recombinant fragment corresponding to a region within amino acids 164-392 of Human Selenophosphate synthetase 1.
Positive control	A431, H1299, HeLa and HepG2 cell lysates.
General notes	<p>The Life Science industry has been in the grips of a reproducibility crisis for a number of years. Abcam is leading the way in addressing this with our range of recombinant monoclonal antibodies and knockout edited cell lines for gold-standard validation. Please check that this product meets your needs before purchasing.</p> <p>If you have any questions, special requirements or concerns, please send us an inquiry and/or contact our Support team ahead of purchase. Recommended alternatives for this product can be found below, along with publications, customer reviews and Q&As</p>

Properties

Form	Liquid
Storage instructions	Shipped at 4°C. Upon delivery aliquot. Store at -20°C or -80°C. Avoid freeze / thaw cycle.
Storage buffer	pH: 7.00 Preservative: 0.01% Thimerosal (merthiolate) Constituents: 1.21% Tris, 0.75% Glycine, 10% Glycerol (glycerin, glycerine)
Purity	Immunogen affinity purified
Clonality	Polyclonal
Isotype	IgG

Applications

The Abpromise guarantee

Our **Abpromise guarantee** covers the use of ab153923 in the following tested applications.

The application notes include recommended starting dilutions; optimal dilutions/concentrations should be determined by the end user.

Application	Abreviews	Notes
WB		1/500 - 1/3000. Predicted molecular weight: 43 kDa.

Target

Function

Synthesizes selenophosphate from selenide and ATP.

Tissue specificity

Isoform 1 and isoform 2 are gradually expressed during the cell cycle until G2/M phase and then decreased. Isoform 3 is gradually expressed during the cell cycle until S phase and then decreased.

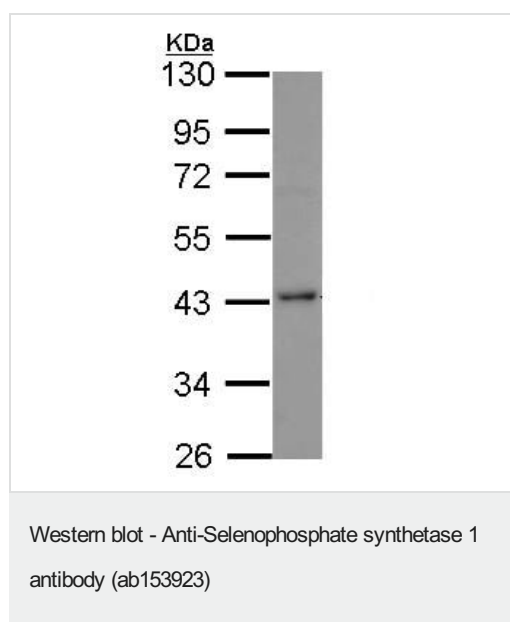
Sequence similarities

Belongs to the selenophosphate synthase 1 family. Class II subfamily.

Cellular localization

Cytoplasm and Cell membrane. Nucleus membrane.

Images



Anti-Selenophosphate synthetase 1 antibody (ab153923) at 1/1000 dilution + HepG2 whole cell lysate at 30 µg

Predicted band size: 43 kDa

10% SDS PAGE

Please note: All products are "FOR RESEARCH USE ONLY. NOT FOR USE IN DIAGNOSTIC PROCEDURES"

Our Abpromise to you: Quality guaranteed and expert technical support

- Replacement or refund for products not performing as stated on the datasheet
- Valid for 12 months from date of delivery
- Response to your inquiry within 24 hours
- We provide support in Chinese, English, French, German, Japanese and Spanish
- Extensive multi-media technical resources to help you

- We investigate all quality concerns to ensure our products perform to the highest standards

If the product does not perform as described on this datasheet, we will offer a refund or replacement. For full details of the Abpromise, please visit <https://www.abcam.com/abpromise> or contact our technical team.

Terms and conditions

- Guarantee only valid for products bought direct from Abcam or one of our authorized distributors