


Product datasheet

Anti-SEMA3D antibody [EPR13458(B)] - C-terminal ab180174

Recombinant RabMAb

★★★★★ **1 Abreviews** [3 Images](#)

Overview

Product name	Anti-SEMA3D antibody [EPR13458(B)] - C-terminal
Description	Rabbit monoclonal [EPR13458(B)] to SEMA3D - C-terminal
Host species	Rabbit
Tested applications	Suitable for: WB, Flow Cyt (Intra) Unsuitable for: ICC/IF, IHC-P or IP
Species reactivity	Reacts with: Human Predicted to work with: Mouse, Rat 
Immunogen	Synthetic peptide. This information is proprietary to Abcam and/or its suppliers.
Positive control	MCF7 cells, 293T, MCF7, fetal brain and fetal heart lysates.
General notes	<p>This product is a recombinant monoclonal antibody, which offers several advantages including:</p> <ul style="list-style-type: none"> - High batch-to-batch consistency and reproducibility - Improved sensitivity and specificity - Long-term security of supply - Animal-free production <p>For more information see here.</p> <p>Our RabMAb[®] technology is a patented hybridoma-based technology for making rabbit monoclonal antibodies. For details on our patents, please refer to RabMAb[®] patents.</p>

Properties

Form	Liquid
Storage instructions	Shipped at 4°C. Store at +4°C short term (1-2 weeks). Upon delivery aliquot. Store at -20°C long term. Avoid freeze / thaw cycle.
Storage buffer	pH: 7.20 Preservative: 0.01% Sodium azide Constituents: 9% PBS, 40% Glycerol (glycerin, glycerine), 0.05% BSA, 50% Tissue culture supernatant
Purity	Tissue culture supernatant

Clonality	Monoclonal
Clone number	EPR13458(B)
Isotype	IgG

Applications

The Abpromise guarantee Our **Abpromise guarantee** covers the use of ab180174 in the following tested applications. The application notes include recommended starting dilutions; optimal dilutions/concentrations should be determined by the end user.

Application	Abreviews	Notes
WB	★★★★★ (1)	1/1000 - 1/5000. Predicted molecular weight: 90 kDa.
Flow Cyt (Intra)		1/10 - 1/100. ab172730 - Rabbit monoclonal IgG, is suitable for use as an isotype control with this antibody.

Application notes Is unsuitable for ICC/IF, IHC-P or IP.

Target

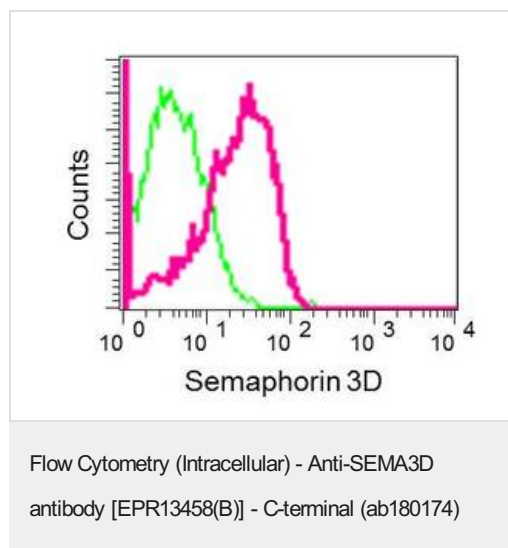
Function Induces the collapse and paralysis of neuronal growth cones. Could potentially act as repulsive cues toward specific neuronal populations. Binds to neuropilin.

Sequence similarities Belongs to the semaphorin family.
Contains 1 Ig-like C2-type (immunoglobulin-like) domain.
Contains 1 PSI domain.
Contains 1 Sema domain.

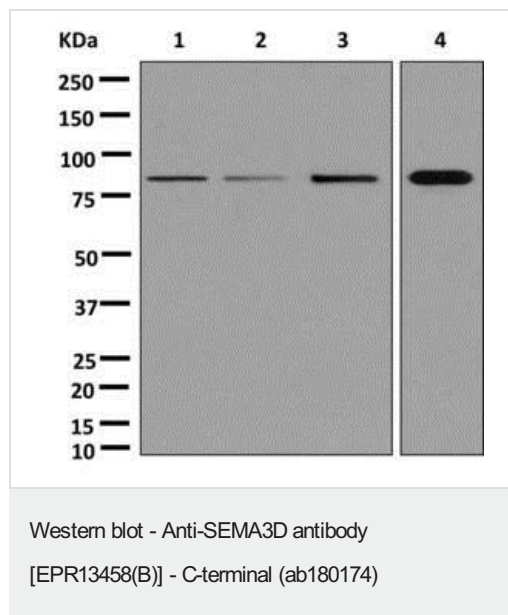
Domain Strong binding to neuropilin is mediated by the carboxy third of the protein.

Cellular localization Secreted.

Images



Intracellular flow cytometric analysis of permeabilized MCF7 cells labeling SEMA3D using ab180174 at 1/10 (red) or a rabbit IgG (negative) (green).



All lanes : Anti-SEMA3D antibody [EPR13458(B)] - C-terminal (ab180174) at 1/1000 dilution

Lane 1 : 293T cell lysate

Lane 2 : Fetal brain lysate

Lane 3 : MCF7 cell lysate

Lane 4 : Fetal heart lysate

Lysates/proteins at 10 µg per lane.

Secondary

All lanes : Standard HRP labeled goat anti-rabbit at 1/2000 dilution

Developed using the ECL technique.

Predicted band size: 90 kDa

Why choose a recombinant antibody?

Research with confidence
Consistent and reproducible results

Long-term and scalable supply
Recombinant technology

Success from the first experiment
Confirmed specificity

Ethical standards compliant
Animal-free production

Anti-SEMA3D antibody [EPR13458(B)] - C-terminal (ab180174)

Please note: All products are "FOR RESEARCH USE ONLY. NOT FOR USE IN DIAGNOSTIC PROCEDURES"

Our Abpromise to you: Quality guaranteed and expert technical support

- Replacement or refund for products not performing as stated on the datasheet
- Valid for 12 months from date of delivery
- Response to your inquiry within 24 hours
- We provide support in Chinese, English, French, German, Japanese and Spanish
- Extensive multi-media technical resources to help you
- We investigate all quality concerns to ensure our products perform to the highest standards

If the product does not perform as described on this datasheet, we will offer a refund or replacement. For full details of the Abpromise, please visit <https://www.abcam.com/abpromise> or contact our technical team.

Terms and conditions

- Guarantee only valid for products bought direct from Abcam or one of our authorized distributors