




Product datasheet

Anti-SEMA5A antibody ab51957

★★★★☆ [2 Abreviews](#) [1 References](#) [1 Image](#)

Overview

Product name	Anti-SEMA5A antibody
Description	Goat polyclonal to SEMA5A
Host species	Goat
Tested applications	Suitable for: IHC-P
Species reactivity	Reacts with: Human Predicted to work with: Mouse, Rat, Cow, Dog 
Immunogen	Synthetic peptide corresponding to SEMA5A aa 91-110 (internal sequence). Sequence: DEATKKACYSKGKS <div>  Run BLAST with  Run BLAST with </div>
General notes	<p>The Life Science industry has been in the grips of a reproducibility crisis for a number of years. Abcam is leading the way in addressing this with our range of recombinant monoclonal antibodies and knockout edited cell lines for gold-standard validation. Please check that this product meets your needs before purchasing.</p> <p>If you have any questions, special requirements or concerns, please send us an inquiry and/or contact our Support team ahead of purchase. Recommended alternatives for this product can be found below, along with publications, customer reviews and Q&As</p>

Properties

Form	Liquid
Storage instructions	Shipped at 4°C. Upon delivery aliquot and store at -20°C or -80°C. Avoid repeated freeze / thaw cycles.
Storage buffer	pH: 7.30 Preservative: 0.02% Sodium azide Constituents: 0.5% BSA, Tris buffered saline
Purity	Immunogen affinity purified
Purification notes	ab51957 was purified from goat serum by ammonium sulphate precipitation followed by antigen affinity chromatography using the immunizing peptide.
Clonality	Polyclonal

Isotype

IgG

Applications

The Abpromise guarantee

Our **Abpromise guarantee** covers the use of ab51957 in the following tested applications.

The application notes include recommended starting dilutions; optimal dilutions/concentrations should be determined by the end user.

Application	Abreviews	Notes
IHC-P		Use a concentration of 4 - 6 µg/ml.

Target

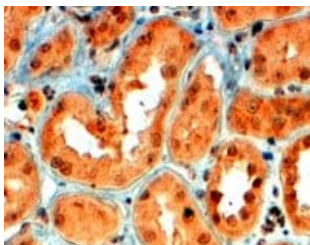
Relevance

Members of the semaphorin protein family are involved in axonal guidance during neural development. Semaphorin 5a is thought to have a bifunctional role in axon guidance, exerting both attractive and inhibitory effects on developing axons associated with limbic function. The thrombospondin repeats of Semaphorin 5a physically interact with both heparan sulfate proteoglycans and chondroitin sulfate proteoglycans, inducing attractive and inhibitory guidance cues, respectively. The biological responses to Semaphorin 5a are induced through binding to its high-affinity receptor, plexin B3, triggering intracellular signaling through Met.

Cellular localization

Membrane; single-pass type I membrane protein

Images



ab51957 at 4µg/ml staining SEMA5A in Human kidney tissue by Immunohistochemistry (Formalin/PFA-fixed paraffin-embedded sections). Steamed antigen retrieval with citrate buffer pH 6 was performed. Antibody was detected by HRP-staining.

Immunohistochemistry (Formalin/PFA-fixed paraffin-embedded sections) - Anti-SEMA5A antibody (ab51957)

Please note: All products are "FOR RESEARCH USE ONLY. NOT FOR USE IN DIAGNOSTIC PROCEDURES"

Our Abpromise to you: Quality guaranteed and expert technical support

- Replacement or refund for products not performing as stated on the datasheet
- Valid for 12 months from date of delivery
- Response to your inquiry within 24 hours
- We provide support in Chinese, English, French, German, Japanese and Spanish

- Extensive multi-media technical resources to help you
- We investigate all quality concerns to ensure our products perform to the highest standards

If the product does not perform as described on this datasheet, we will offer a refund or replacement. For full details of the Abpromise, please visit <https://www.abcam.com/abpromise> or contact our technical team.

Terms and conditions

- Guarantee only valid for products bought direct from Abcam or one of our authorized distributors