

Anti-SEMA6D antibody - N-terminal ab198745

[1 References](#) [1 Image](#)

Overview

Product name	Anti-SEMA6D antibody - N-terminal
Description	Rabbit polyclonal to SEMA6D - N-terminal
Host species	Rabbit
Tested applications	Suitable for: IHC-P
Species reactivity	Reacts with: Human
Immunogen	Synthetic peptide within Human SEMA6D (N terminal). The exact sequence is proprietary. From isoform 8 (NP_705872). Database link: Q8NFY4-8
Positive control	paraffin-embedded Human liver cancer tissue
General notes	<p>The Life Science industry has been in the grips of a reproducibility crisis for a number of years. Abcam is leading the way in addressing this with our range of recombinant monoclonal antibodies and knockout edited cell lines for gold-standard validation. Please check that this product meets your needs before purchasing.</p> <p>If you have any questions, special requirements or concerns, please send us an inquiry and/or contact our Support team ahead of purchase. Recommended alternatives for this product can be found below, along with publications, customer reviews and Q&As</p>

Properties

Form	Liquid
Storage instructions	Shipped at 4°C. Store at +4°C short term (1-2 weeks). Upon delivery aliquot. Store at -20°C long term. Avoid freeze / thaw cycle.
Storage buffer	pH: 7.4 Preservative: 0.05% Sodium azide Constituents: 50% Glycerol (glycerin, glycerine), 49% PBS
Purity	Immunogen affinity purified
Clonality	Polyclonal
Isotype	IgG

Applications

The Abpromise guarantee

Our **Abpromise guarantee** covers the use of ab198745 in the following tested applications.

The application notes include recommended starting dilutions; optimal dilutions/concentrations should be determined by the end user.

Application	Abreviews	Notes
IHC-P		1/25 - 1/100.

Target

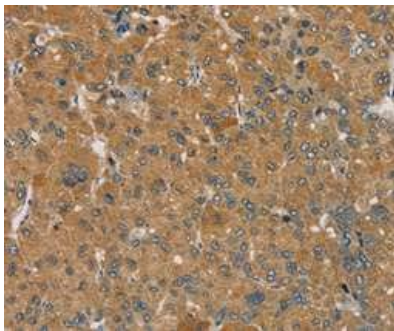
Relevance

SEMA6D belongs to the semaphorin family of proteins, which are a large family of secreted and transmembrane proteins, some of which function as repellent signals during axon guidance. SEMA6D shows growth cone collapsing activity on dorsal root ganglion (DRG) neurons in vitro and may be a stop signal for DRG neurons in their target areas, and possibly also for other neurons. It may also be involved in the maintenance and remodeling of neuronal connections.

Cellular localization

Isoforms 1-6: Cell membrane; Single-pass type I membrane protein. Isoform 7: Cytoplasm.

Images



Immunohistochemical analysis of paraffin-embedded Human liver cancer tissue labeling SEMA6D using ab198745 at 1/25 dilution.

Immunohistochemistry (Formalin/PFA-fixed paraffin-embedded sections) - Anti-SEMA6D antibody - N-terminal (ab198745)

Please note: All products are "FOR RESEARCH USE ONLY. NOT FOR USE IN DIAGNOSTIC PROCEDURES"

Our Abpromise to you: Quality guaranteed and expert technical support

- Replacement or refund for products not performing as stated on the datasheet
- Valid for 12 months from date of delivery
- Response to your inquiry within 24 hours
- We provide support in Chinese, English, French, German, Japanese and Spanish
- Extensive multi-media technical resources to help you
- We investigate all quality concerns to ensure our products perform to the highest standards

If the product does not perform as described on this datasheet, we will offer a refund or replacement. For full details of the Abpromise, please visit <https://www.abcam.com/abpromise> or contact our technical team.

Terms and conditions

- Guarantee only valid for products bought direct from Abcam or one of our authorized distributors