

Product datasheet

Anti-SENP2 antibody ab58418

[8 References](#) [2 Images](#)

Overview

Product name	Anti-SENP2 antibody
Description	Rabbit polyclonal to SENP2
Host species	Rabbit
Tested applications	Suitable for: WB, ICC/IF
Species reactivity	Reacts with: Human
Immunogen	Synthetic peptide corresponding to Human SENP2 aa 481-530. Database link: Q9HC62
Positive control	WB: MDA-MB-435 cell extract. ICC/IF: HepG2 cells.
General notes	<p>The Life Science industry has been in the grips of a reproducibility crisis for a number of years. Abcam is leading the way in addressing this with our range of recombinant monoclonal antibodies and knockout edited cell lines for gold-standard validation. Please check that this product meets your needs before purchasing.</p> <p>If you have any questions, special requirements or concerns, please send us an inquiry and/or contact our Support team ahead of purchase. Recommended alternatives for this product can be found below, along with publications, customer reviews and Q&As</p>

Properties

Form	Liquid
Storage instructions	Shipped at 4°C. Store at -20°C. Stable for 12 months at -20°C.
Storage buffer	pH: 7.40 Preservative: 0.02% Sodium azide Constituents: PBS, 50% Glycerol (glycerin, glycerine), 0.87% Sodium chloride
	Without Mg ⁺² and Ca ⁺²
Purity	Immunogen affinity purified
Clonality	Polyclonal
Isotype	IgG

Applications

The Abpromise guarantee

Our **Abpromise guarantee** covers the use of ab58418 in the following tested applications.

The application notes include recommended starting dilutions; optimal dilutions/concentrations should be determined by the end user.

Application	Abreviews	Notes
WB		1/500 - 1/1000. Detects a band of approximately 70 kDa (predicted molecular weight: 68 kDa).
ICC/IF		Use a concentration of 5 µg/ml.

Target

Function

Protease that catalyzes two essential functions in the SUMO pathway: processing of full-length SUMO1, SUMO2 and SUMO3 to their mature forms and deconjugation of SUMO1, SUMO2 and SUMO3 from targeted proteins. May down-regulate CTNNB1 levels and thereby modulate the Wnt pathway.

Sequence similarities

Belongs to the peptidase C48 family.

Domain

The N-terminus is necessary and sufficient for nuclear envelope targeting.

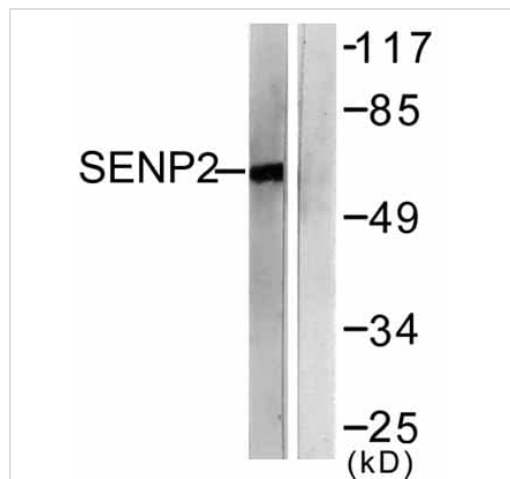
Post-translational modifications

Polyubiquitinated; which leads to proteasomal degradation.

Cellular localization

Nucleus > nuclear pore complex. Nucleus membrane. Cytoplasm. Shuttles between cytoplasm and nucleus.

Images



Western blot - Anti-SENP2 antibody (ab58418)

All lanes : Anti-SENP2 antibody (ab58418) at 1/500 dilution

Lane 1 : MDA-MB-435 cell extract

Lane 2 : MDA-MB-435 cell extract with immunizing peptide

Predicted band size: 68 kDa

Observed band size: 70 kDa

Immunocytochemistry/ Immunofluorescence - Anti-SENP2 antibody (ab58418)

ICC/IF image of ab58418 stained HepG2 cells. The cells were 4% formaldehyde fixed (10 min) and then incubated in 1%BSA / 10% normal goat serum / 0.3M glycine in 0.1% PBS-Tween for 1h to permeabilise the cells and block non-specific protein-protein interactions. The cells were then incubated with the antibody

(ab58418, 5µg/ml) overnight at +4°C. The secondary antibody (green) was Alexa Fluor® 488 goat anti-mouse IgG (H+L) used at a 1/1000 dilution for 1h. Alexa Fluor® 594 WGA was used to label plasma membranes (red) at a 1/200 dilution for 1h. DAPI was used to stain the cell nuclei (blue) at a concentration of 1.43µM.

Please note: All products are "FOR RESEARCH USE ONLY. NOT FOR USE IN DIAGNOSTIC PROCEDURES"

Our Abpromise to you: Quality guaranteed and expert technical support

- Replacement or refund for products not performing as stated on the datasheet
- Valid for 12 months from date of delivery
- Response to your inquiry within 24 hours

- We provide support in Chinese, English, French, German, Japanese and Spanish
- Extensive multi-media technical resources to help you
- We investigate all quality concerns to ensure our products perform to the highest standards

If the product does not perform as described on this datasheet, we will offer a refund or replacement. For full details of the Abpromise, please visit <https://www.abcam.com/abpromise> or contact our technical team.

Terms and conditions

- Guarantee only valid for products bought direct from Abcam or one of our authorized distributors