




Anti-SEPT7 antibody ab186010

★★★★★ [2 Abreviews](#) [2 Images](#)

Overview

Product name	Anti-SEPT7 antibody
Description	Rabbit polyclonal to SEPT7
Host species	Rabbit
Tested applications	Suitable for: IP, WB
Species reactivity	<p>Reacts with: Mouse, Human</p> <p>Predicted to work with: Rat, Rabbit, Horse, Chicken, Guinea pig, Cow, Cat, Dog, Pig, Chimpanzee, Rhesus monkey, Gorilla, Chinese hamster, Orangutan </p>
Immunogen	<p>Synthetic peptide within Human SEPT7 aa 50-150. The exact immunogen sequence used to generate this antibody is proprietary information. If additional detail on the immunogen is needed to determine the suitability of the antibody for your needs, please contact our Scientific Support team to discuss your requirements. NP_001779.3</p> <p>Database link: Q16181</p> <p style="text-align: right;">  Run BLAST with  Run BLAST with </p>
Positive control	HeLa, 293T, Jurkat, TCMK-1, NIH3T3 whole cell lysates,
General notes	<p>The Life Science industry has been in the grips of a reproducibility crisis for a number of years. Abcam is leading the way in addressing this with our range of recombinant monoclonal antibodies and knockout edited cell lines for gold-standard validation. Please check that this product meets your needs before purchasing.</p> <p>If you have any questions, special requirements or concerns, please send us an inquiry and/or contact our Support team ahead of purchase. Recommended alternatives for this product can be found below, along with publications, customer reviews and Q&As</p>

Properties

Form	Liquid
Storage instructions	Shipped at 4°C. Store at +4°C short term (1-2 weeks). Upon delivery aliquot. Store at -20°C long term. Avoid freeze / thaw cycle.
Storage buffer	<p>pH: 7.00</p> <p>Preservative: 0.09% Sodium azide</p> <p>Constituent: 99% Tris citrate/phosphate</p> <p>pH 7.0-8.0</p>

Purity	Immunogen affinity purified
Clonality	Polyclonal
Isotype	IgG

Applications

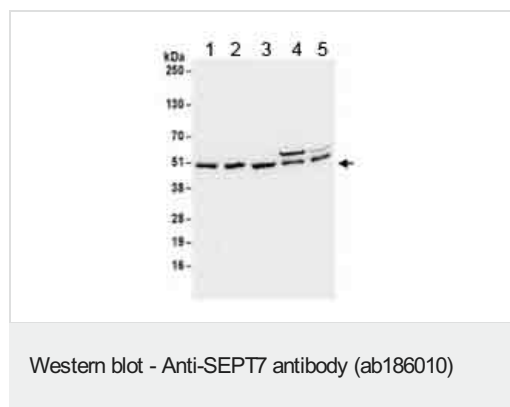
The Abpromise guarantee Our **Abpromise guarantee** covers the use of ab186010 in the following tested applications. The application notes include recommended starting dilutions; optimal dilutions/concentrations should be determined by the end user.

Application	Abreviews	Notes
IP		Use at 2-10 µg/mg of lysate.
WB	★★★★★ (2)	1/2000 - 1/10000. Predicted molecular weight: 51 kDa.

Target

Function	Filament-forming cytoskeletal GTPase. Required for normal organization of the actin cytoskeleton. Required for normal progress through mitosis. Involved in cytokinesis. Required for normal association of CENPE with the kinetochore. Plays a role in ciliogenesis and collective cell movements.
Tissue specificity	Widely expressed.
Sequence similarities	Belongs to the septin family.
Cellular localization	Cytoplasm. Chromosome > centromere > kinetochore. Cytoplasm > cytoskeleton > spindle. Cleavage furrow. Midbody. Cytoplasm > cytoskeleton > cilium axoneme. Distributed throughout the cytoplasm in prometaphase cells. Associated with the spindle during metaphase. Associated with the central spindle and at the cleavage furrow in anaphase cells. Detected at the midbody in telophase. Associated with actin stress fibers.

Images



All lanes : Anti-SEPT7 antibody (ab186010) at 0.1 µg/ml

Lane 1 : HeLa whole cell lysate

Lane 2 : 293T cell whole cell lysate

Lane 3 : Jurkat whole cell lysate

Lane 4 : TCMK-1 whole cell lysate

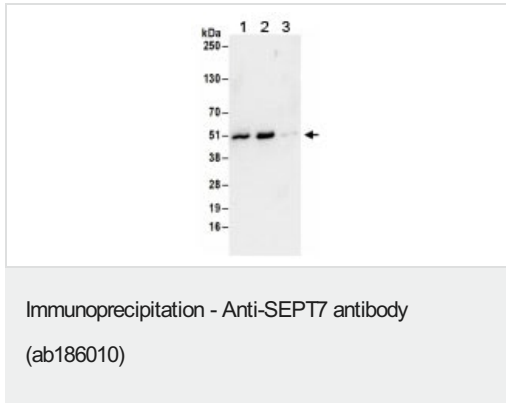
Lane 5 : NIH3T3 whole cell lysate

Lysates/proteins at 50 µg per lane.

Developed using the ECL technique.

Predicted band size: 51 kDa

Exposure time: 30 seconds



Detection of SEPT7 by Western Blot of Immunoprecipitates.
Samples: Whole cell lysate (1 mg for IP; 20% of IP loaded) from HeLa cells was immunoprecipitated using ab186010 at 6 µg/mg (1), a control rabbit anti-SEPT7 antibody (2) and negative control IgG (3). For blotting immunoprecipitated SEPT7 ab186010 was used at 1 µg/ml. ECL with an exposure time of 10 seconds was used for detection.

Please note: All products are "FOR RESEARCH USE ONLY. NOT FOR USE IN DIAGNOSTIC PROCEDURES"

Our Abpromise to you: Quality guaranteed and expert technical support

- Replacement or refund for products not performing as stated on the datasheet
- Valid for 12 months from date of delivery
- Response to your inquiry within 24 hours
- We provide support in Chinese, English, French, German, Japanese and Spanish
- Extensive multi-media technical resources to help you
- We investigate all quality concerns to ensure our products perform to the highest standards

If the product does not perform as described on this datasheet, we will offer a refund or replacement. For full details of the Abpromise, please visit <https://www.abcam.com/abpromise> or contact our technical team.

Terms and conditions

- Guarantee only valid for products bought direct from Abcam or one of our authorized distributors