


Product datasheet

Anti-Septin 8 antibody ab154112

[2 Images](#)

Overview

Product name	Anti-Septin 8 antibody
Description	Rabbit polyclonal to Septin 8
Host species	Rabbit
Tested applications	Suitable for: WB, ICC/IF
Species reactivity	Reacts with: Human Predicted to work with: Mouse, Rat, Rabbit, Cow, Xenopus tropicalis 
Immunogen	Recombinant fragment, corresponding to a region within amino acids 174-458 of Human Septin 8 (UniProt ID: Q92599).
Positive control	A549, HeLa, HepG2 and HCT116 whole cell lysates; HeLa cells
General notes	<p>The Life Science industry has been in the grips of a reproducibility crisis for a number of years. Abcam is leading the way in addressing this with our range of recombinant monoclonal antibodies and knockout edited cell lines for gold-standard validation. Please check that this product meets your needs before purchasing.</p> <p>If you have any questions, special requirements or concerns, please send us an inquiry and/or contact our Support team ahead of purchase. Recommended alternatives for this product can be found below, along with publications, customer reviews and Q&As</p>

Properties

Form	Liquid
Storage instructions	Shipped at 4°C. Upon delivery aliquot and store at -20°C or -80°C. Avoid repeated freeze / thaw cycles.
Storage buffer	pH: 7.00 Preservative: 0.01% Thimerosal (merthiolate) Constituents: 1.21% Tris, 0.75% Glycine, 20% Glycerol (glycerin, glycerine)
Purity	Immunogen affinity purified
Clonality	Polyclonal
Isotype	IgG

Applications

The Abpromise guarantee

Our **Abpromise guarantee** covers the use of ab154112 in the following tested applications.

The application notes include recommended starting dilutions; optimal dilutions/concentrations should be determined by the end user.

Application	Abreviews	Notes
WB		1/500 - 1/3000. Predicted molecular weight: 56 kDa.
ICC/IF		1/100 - 1/1000.

Target

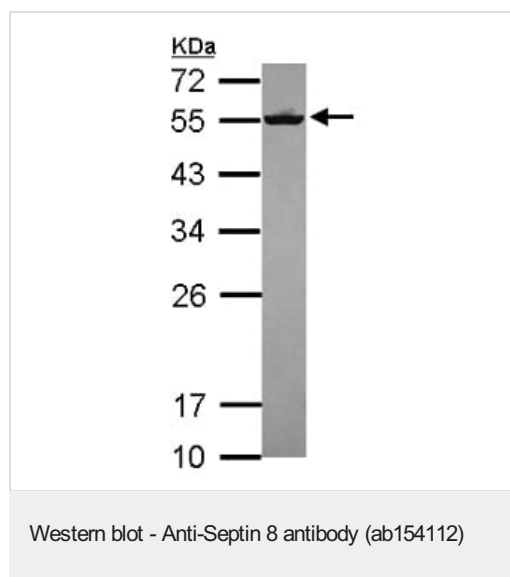
Relevance

Septin 8 (SEPT8) is a member of the highly conserved septin family. Septins are 40- to 60-kD GTPases that assemble as filamentous scaffolds. They are involved in the organization of submembranous structures, in neuronal polarity, and in vesicle trafficking. There are 3 isoforms produced by alternative splicing.

Cellular localization

Cytoplasmic; cytoskeleton.

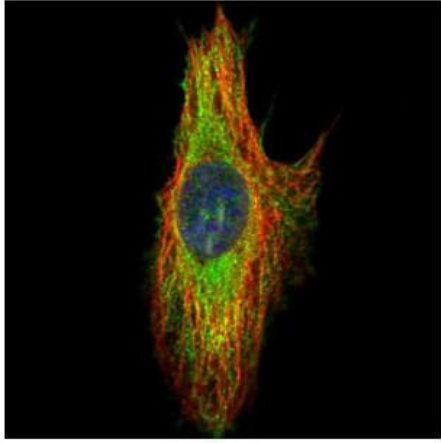
Images



Anti-Septin 8 antibody (ab154112) at 1/2000 dilution + HCT116 whole cell lysate at 30 μ g

Predicted band size: 56 kDa

12% SDS PAGE



Immunocytochemistry/ Immunofluorescence - Anti-Septin 8 antibody (ab154112)

Immunofluorescent analysis of methanol-fixed HeLa cells labeling Septin 8 with ab154112 at 1/200 dilution (green). Alpha tubulin filaments were labeled with an Alpha tubulin antibody (red).

Please note: All products are "FOR RESEARCH USE ONLY. NOT FOR USE IN DIAGNOSTIC PROCEDURES"

Our Abpromise to you: Quality guaranteed and expert technical support

- Replacement or refund for products not performing as stated on the datasheet
- Valid for 12 months from date of delivery
- Response to your inquiry within 24 hours
- We provide support in Chinese, English, French, German, Japanese and Spanish
- Extensive multi-media technical resources to help you
- We investigate all quality concerns to ensure our products perform to the highest standards

If the product does not perform as described on this datasheet, we will offer a refund or replacement. For full details of the Abpromise, please visit <https://www.abcam.com/abpromise> or contact our technical team.

Terms and conditions

- Guarantee only valid for products bought direct from Abcam or one of our authorized distributors