


Anti-SERCA3 ATPase antibody - N-terminal ab154259

[1 References](#) [3 Images](#)

Overview

Product name	Anti-SERCA3 ATPase antibody - N-terminal
Description	Rabbit polyclonal to SERCA3 ATPase - N-terminal
Host species	Rabbit
Tested applications	Suitable for: WB, IHC-P
Species reactivity	Reacts with: Mouse, Human Predicted to work with: Rat, Chicken, Cow, Xenopus laevis, Xenopus tropicalis 
Immunogen	Recombinant fragment, corresponding to a region within N -terminal amino acids 3-185 of Human SERCA3 ATPase (Uniprot ID: Q93084).
Positive control	Jurkat, Raji, K562 and BCL1 whole cell lysates; Human colon carcinoma tissue.
General notes	<p>The Life Science industry has been in the grips of a reproducibility crisis for a number of years. Abcam is leading the way in addressing this with our range of recombinant monoclonal antibodies and knockout edited cell lines for gold-standard validation. Please check that this product meets your needs before purchasing.</p> <p>If you have any questions, special requirements or concerns, please send us an inquiry and/or contact our Support team ahead of purchase. Recommended alternatives for this product can be found below, along with publications, customer reviews and Q&As</p>

Properties

Form	Liquid
Storage instructions	Shipped at 4°C. Upon delivery aliquot. Store at -20°C or -80°C. Avoid freeze / thaw cycle.
Storage buffer	pH: 7.00 Preservative: 0.01% Thimerosal (merthiolate) Constituents: 78.99% PBS, 1% BSA, 20% Glycerol (glycerin, glycerine)
Purity	Immunogen affinity purified
Clonality	Polyclonal
Isotype	IgG

Applications

The Abpromise guarantee

Our **Abpromise guarantee** covers the use of ab154259 in the following tested applications.

The application notes include recommended starting dilutions; optimal dilutions/concentrations should be determined by the end user.

Application	Abreviews	Notes
WB		1/1000 - 1/10000. Predicted molecular weight: 114 kDa.
IHC-P		1/100 - 1/1000.

Target

Function

This magnesium-dependent enzyme catalyzes the hydrolysis of ATP coupled with the transport of calcium. Transports calcium ions from the cytosol into the sarcoplasmic/endoplasmic reticulum lumen. Contributes to calcium sequestration involved in muscular excitation/contraction.

Tissue specificity

Found in most tissues. Most abundant in thymus, trachea, salivary gland, spleen, bone marrow, lymph node, peripheral leukocytes, pancreas and colon. Also detected in fetal tissues.

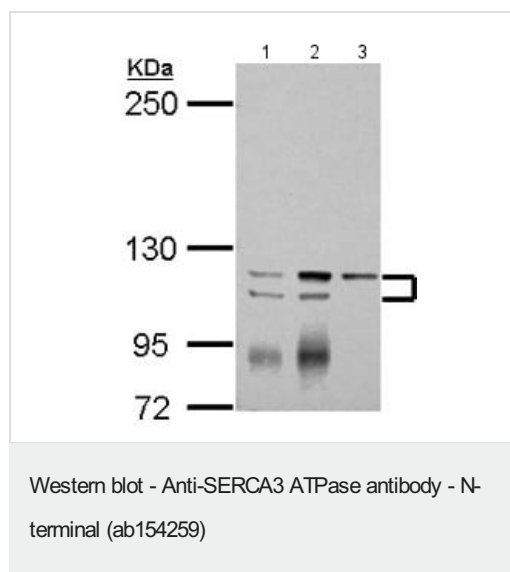
Sequence similarities

Belongs to the cation transport ATPase (P-type) (TC 3.A.3) family. Type IIA subfamily.

Cellular localization

Nucleus membrane. Endoplasmic reticulum membrane. Sarcoplasmic reticulum membrane.

Images



All lanes : Anti-SERCA3 ATPase antibody - N-terminal (ab154259) at 1/2000 dilution

Lane 1 : Jurkat whole cell lysate

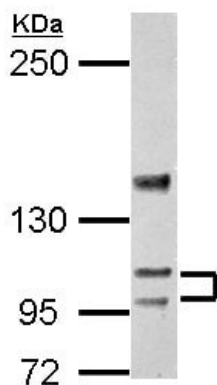
Lane 2 : Raji whole cell lysate

Lane 3 : K562 whole cell lysate

Lysates/proteins at 30 µg per lane.

Predicted band size: 114 kDa

5% SDS PAGE

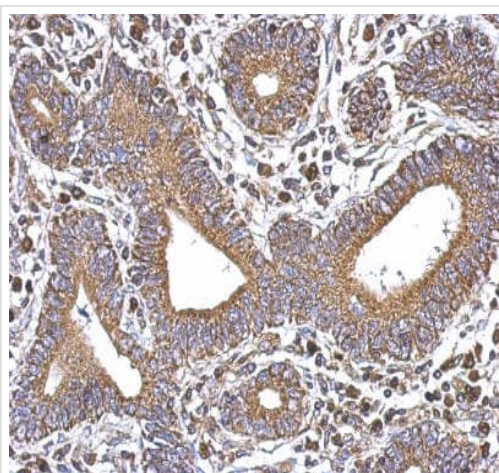


Western blot - Anti-SERCA3 ATPase antibody - N-terminal (ab154259)

Anti-SERCA3 ATPase antibody - N-terminal (ab154259) at 1/5000 dilution + BCL1 whole cell lysate at 30 µg

Predicted band size: 114 kDa

5% SDS PAGE



Immunohistochemistry (Formalin/PFA-fixed paraffin-embedded sections) - Anti-SERCA3 ATPase antibody - N-terminal (ab154259)

Immunohistochemical analysis of paraffin-embedded Human colon carcinoma tissue labeling SERCA3 ATPase with ab154259 at 1/500 dilution.

Please note: All products are "FOR RESEARCH USE ONLY. NOT FOR USE IN DIAGNOSTIC PROCEDURES"

Our Abpromise to you: Quality guaranteed and expert technical support

- Replacement or refund for products not performing as stated on the datasheet
- Valid for 12 months from date of delivery

- Response to your inquiry within 24 hours
- We provide support in Chinese, English, French, German, Japanese and Spanish
- Extensive multi-media technical resources to help you
- We investigate all quality concerns to ensure our products perform to the highest standards

If the product does not perform as described on this datasheet, we will offer a refund or replacement. For full details of the Abpromise, please visit <https://www.abcam.com/abpromise> or contact our technical team.

Terms and conditions

- Guarantee only valid for products bought direct from Abcam or one of our authorized distributors