




## Product datasheet

# Anti-Serine racemase antibody ab219855

★★★★★ [1 Abreviews](#) [1 Image](#)

### Overview

---

<b>Product name</b>	Anti-Serine racemase antibody
<b>Description</b>	Rabbit polyclonal to Serine racemase
<b>Host species</b>	Rabbit
<b>Tested applications</b>	<b>Suitable for:</b> ICC/IF
<b>Species reactivity</b>	<b>Reacts with:</b> Human <b>Predicted to work with:</b> Mouse, Rat, Cow 
<b>Immunogen</b>	Recombinant fragment corresponding to Human Serine racemase aa 150-300. Database link: <a href="#">Q9GZT4</a>  <a href="#">Run BLAST with</a>  <a href="#">Run BLAST with</a>
<b>Positive control</b>	U-2 OS cells.
<b>General notes</b>	<p>The Life Science industry has been in the grips of a reproducibility crisis for a number of years. Abcam is leading the way in addressing this with our range of recombinant monoclonal antibodies and knockout edited cell lines for gold-standard validation. Please check that this product meets your needs before purchasing.</p> <p>If you have any questions, special requirements or concerns, please send us an inquiry and/or contact our Support team ahead of purchase. Recommended alternatives for this product can be found below, along with publications, customer reviews and Q&amp;As</p>

### Properties

---

<b>Form</b>	Liquid
<b>Storage instructions</b>	Shipped at 4°C. Store at +4°C short term (1-2 weeks). Upon delivery aliquot. Store at -20°C long term. Avoid freeze / thaw cycle.
<b>Storage buffer</b>	pH: 7.20 Preservative: 0.02% Sodium azide Constituents: 59% PBS, 40% Glycerol (glycerin, glycerine)
<b>Purity</b>	Immunogen affinity purified
<b>Clonality</b>	Polyclonal
<b>Isotype</b>	IgG

## Applications

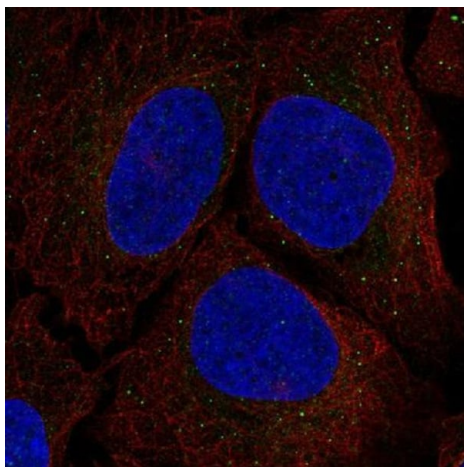
**The Abpromise guarantee** Our **Abpromise guarantee** covers the use of ab219855 in the following tested applications. The application notes include recommended starting dilutions; optimal dilutions/concentrations should be determined by the end user.

Application	Abreviews	Notes
ICC/IF		Use a concentration of 0.25 - 2 µg/ml.

## Target

<b>Function</b>	Catalyzes the synthesis of D-serine from L-serine. D-serine is a key coagonist with glutamate at NMDA receptors. Has dehydratase activity towards both L-serine and D-serine.
<b>Tissue specificity</b>	Brain: expressed at high levels in hippocampus and corpus callosum, intermediate levels in substantia nigra and caudate, and low levels in amygdala, thalamus, and subthalamic nuclei. Expressed in heart, skeletal muscle, kidney and liver.
<b>Sequence similarities</b>	Belongs to the serine/threonine dehydratase family.
<b>Post-translational modifications</b>	S-nitrosylated, leading to decrease the enzyme activity.

## Images



Immunofluorescent analysis of PFA-fixed, Triton X-100 permeabilized U-2 OS cells labeling Serine racemase with ab219855 at 4 µg/ml (green).

Immunocytochemistry/ Immunofluorescence - Anti-Serine racemase antibody (ab219855)

**Please note:** All products are "FOR RESEARCH USE ONLY. NOT FOR USE IN DIAGNOSTIC PROCEDURES"

## Our Abpromise to you: Quality guaranteed and expert technical support

- Replacement or refund for products not performing as stated on the datasheet
- Valid for 12 months from date of delivery
- Response to your inquiry within 24 hours

- We provide support in Chinese, English, French, German, Japanese and Spanish
- Extensive multi-media technical resources to help you
- We investigate all quality concerns to ensure our products perform to the highest standards

If the product does not perform as described on this datasheet, we will offer a refund or replacement. For full details of the Abpromise, please visit <https://www.abcam.com/abpromise> or contact our technical team.

### **Terms and conditions**

---

- Guarantee only valid for products bought direct from Abcam or one of our authorized distributors