

## Product datasheet

# Anti-Serotonin transporter antibody ab102048

★★★★★ [1 Abreviews](#) [5 References](#) [2 Images](#)

### Overview

---

<b>Product name</b>	Anti-Serotonin transporter antibody
<b>Description</b>	Rabbit polyclonal to Serotonin transporter
<b>Host species</b>	Rabbit
<b>Tested applications</b>	<b>Suitable for:</b> WB
<b>Species reactivity</b>	<b>Reacts with:</b> Mouse, Human
<b>Immunogen</b>	Recombinant full length protein, corresponding to amino acids 1-630 of Human Serotonin transporter (AAH69484.1).
<b>Positive control</b>	Mouse lung lysate. Transfected 293T cell line.
<b>General notes</b>	<p>The Life Science industry has been in the grips of a reproducibility crisis for a number of years. Abcam is leading the way in addressing this with our range of recombinant monoclonal antibodies and knockout edited cell lines for gold-standard validation. Please check that this product meets your needs before purchasing.</p> <p>If you have any questions, special requirements or concerns, please send us an inquiry and/or contact our Support team ahead of purchase. Recommended alternatives for this product can be found below, along with publications, customer reviews and Q&amp;As</p>

### Properties

---

<b>Form</b>	Liquid
<b>Storage instructions</b>	Shipped at 4°C. Upon delivery aliquot. Store at -20°C or -80°C. Avoid freeze / thaw cycle.
<b>Storage buffer</b>	pH: 7.4 Constituent: PBS
<b>Purity</b>	Protein A purified
<b>Clonality</b>	Polyclonal
<b>Isotype</b>	IgG

### Applications

---

**The Abpromise guarantee** Our **Abpromise guarantee** covers the use of ab102048 in the following tested applications. The application notes include recommended starting dilutions; optimal dilutions/concentrations should be determined by the end user.

Application	Abreviews	Notes
WB		1/500 - 1/1000. Predicted molecular weight: 71 kDa.

## Target

### Function

Serotonin transporter whose primary function in the central nervous system involves the regulation of serotonergic signaling via transport of serotonin molecules from the synaptic cleft back into the pre-synaptic terminal for re-utilization. Plays a key role in mediating regulation of the availability of serotonin to other receptors of serotonergic systems. Terminates the action of serotonin and recycles it in a sodium-dependent manner.

### Tissue specificity

Expressed in platelets (at protein level).

### Sequence similarities

Belongs to the sodium:neurotransmitter symporter (SNF) (TC 2.A.22) family. SLC6A4 subfamily.

### Post-translational modifications

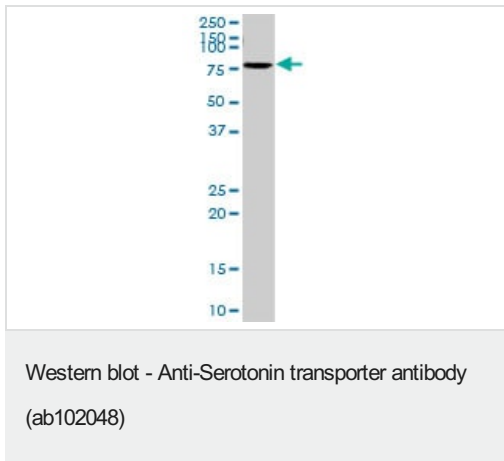
Glycosylated; modification with sialylated N-glycans is a requirement for transporters to associate with each other and to function as homooligomeric forms.

Phosphorylated at Ser-611, Thr-613 and Thr-616.

### Cellular localization

Cell membrane. Endomembrane system. Endosome membrane. Translocates from intracellular locations to the plasma membrane. Density of transporter molecules on the plasma membrane is itself regulated by serotonin.

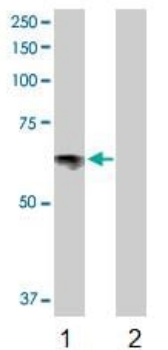
## Images



Anti-Serotonin transporter antibody (ab102048) at 1/500 dilution +  
Mouse lung tissue lysate at 50 µg

Developed using the ECL technique.

**Predicted band size:** 71 kDa



Western blot - Anti-Serotonin transporter antibody (ab102048)

**All lanes** : Anti-Serotonin transporter antibody (ab102048) at 1/500 dilution

**Lane 1** : Serotonin transporter transfected lysate from 293T cell line

**Lane 2** : Non transfected lysate from 293T cell line

Lysates/proteins at 25 µg per lane.

Developed using the ECL technique.

**Predicted band size:** 71 kDa

**Observed band size:** 70.3 kDa

**Please note:** All products are "FOR RESEARCH USE ONLY. NOT FOR USE IN DIAGNOSTIC PROCEDURES"

### Our Abpromise to you: Quality guaranteed and expert technical support

---

- Replacement or refund for products not performing as stated on the datasheet
- Valid for 12 months from date of delivery
- Response to your inquiry within 24 hours
- We provide support in Chinese, English, French, German, Japanese and Spanish
- Extensive multi-media technical resources to help you
- We investigate all quality concerns to ensure our products perform to the highest standards

If the product does not perform as described on this datasheet, we will offer a refund or replacement. For full details of the Abpromise, please visit <https://www.abcam.com/abpromise> or contact our technical team.

### Terms and conditions

---

- Guarantee only valid for products bought direct from Abcam or one of our authorized distributors