

Anti-SERPINB1/PI2 antibody ab47731

[5 References](#) [2 Images](#)

Overview

Product name	Anti-SERPINB1/PI2 antibody
Description	Rabbit polyclonal to SERPINB1/PI2
Host species	Rabbit
Specificity	This antibody is specific for SERPINB1/PI2.
Tested applications	Suitable for: WB, IHC-P
Species reactivity	Reacts with: Human
Immunogen	Synthetic peptide corresponding to Human SERPINB1/PI2 (N terminal).
General notes	<p>The Life Science industry has been in the grips of a reproducibility crisis for a number of years. Abcam is leading the way in addressing this with our range of recombinant monoclonal antibodies and knockout edited cell lines for gold-standard validation. Please check that this product meets your needs before purchasing.</p> <p>If you have any questions, special requirements or concerns, please send us an inquiry and/or contact our Support team ahead of purchase. Recommended alternatives for this product can be found below, along with publications, customer reviews and Q&As</p>

Properties

Form	Liquid
Storage instructions	Shipped at 4°C. Upon delivery aliquot and store at -20°C. Avoid freeze / thaw cycles.
Storage buffer	Preservative: 0.05% Sodium azide Constituent: 50% Glycerol
Purity	Immunogen affinity purified
Clonality	Polyclonal
Isotype	IgG

Applications

The Abpromise guarantee Our **Abpromise guarantee** covers the use of ab47731 in the following tested applications. The application notes include recommended starting dilutions; optimal dilutions/concentrations should be determined by the end user.

Application	Abreviews	Notes
WB		1/1000 - 1/5000. Detects a band of approximately 47 kDa (predicted molecular weight: 43 kDa).
IHC-P		Use at an assay dependent concentration.

Target

Function	Regulates the activity of the neutrophil proteases elastase, cathepsin G, proteinase-3, chymase, chymotrypsin, and kallikrein-3.
Sequence similarities	Belongs to the serpin family. Ov-serpin subfamily.
Domain	Reactive bond 1 is specific for reaction with chymotrypsin-like protease such as cathepsin G, chymotrypsin or chymase, while reactive bond 2 is specific for reaction with elastase-like protease such as neutrophil elastase, proteinase-3, pancreatic elastase or PSA.
Cellular localization	Cytoplasm.

Images



All lanes : Anti-SERPINB1/PI2 antibody (ab47731) at 1/1000 dilution

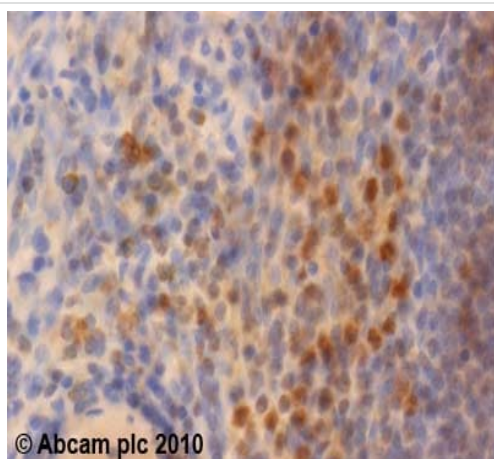
All lanes : MH-S cell lysate

Lysates/proteins at 20 µl per lane.

Predicted band size: 43 kDa

Observed band size: 47 kDa

Additional bands at: 65 kDa (possible degradation product)



Immunohistochemistry (Formalin/PFA-fixed paraffin-embedded sections) - Anti-SERPINB1/PI2 antibody (ab47731)

ab47731 (2µg/ml) staining Serpin B1 in human spleen using an automated system (DAKO Autostainer Plus). Using this protocol there is cytoplasmic staining in both red and white pulp. Sections were rehydrated and antigen retrieved with the Dako 3 in 1 AR buffer citrate pH 6.0 in a DAKO PT link. Slides were peroxidase blocked in 3% H₂O₂ in methanol for 10 mins. They were then blocked with Dako Protein block for 10 minutes (containing casein 0.25% in PBS) then incubated with primary antibody for 20 min and detected with Dako Envision Flex amplification kit for 30 minutes. Colorimetric detection was completed with Diaminobenzidine for 5 minutes. Slides were counterstained with Haematoxylin and coverslipped under DePeX. Please note that, for manual staining, optimization of primary antibody concentration and incubation time is recommended. Signal amplification may be required.

Please note: All products are "FOR RESEARCH USE ONLY. NOT FOR USE IN DIAGNOSTIC PROCEDURES"

Our Abpromise to you: Quality guaranteed and expert technical support

- Replacement or refund for products not performing as stated on the datasheet
- Valid for 12 months from date of delivery
- Response to your inquiry within 24 hours
- We provide support in Chinese, English, French, German, Japanese and Spanish
- Extensive multi-media technical resources to help you
- We investigate all quality concerns to ensure our products perform to the highest standards

If the product does not perform as described on this datasheet, we will offer a refund or replacement. For full details of the Abpromise, please visit <https://www.abcam.com/abpromise> or contact our technical team.

Terms and conditions

- Guarantee only valid for products bought direct from Abcam or one of our authorized distributors