

Product datasheet

Anti-Serum Amyloid A antibody [EPR11592-129] ab190801

Recombinant

RabMAb

3 Images

Overview

Product name	Anti-Serum Amyloid A antibody [EPR11592-129]
Description	Rabbit monoclonal [EPR11592-129] to Serum Amyloid A
Host species	Rabbit
Tested applications	Suitable for: WB
Species reactivity	Reacts with: Human
Immunogen	Synthetic peptide. This information is proprietary to Abcam and/or its suppliers.
Positive control	Human serum and plasma lysates; Serum Amyloid A recombinant protein (aa1-122 of UniProt P0DJ19, with a proprietary tag).
General notes	<p>This product is a recombinant monoclonal antibody, which offers several advantages including:</p> <ul style="list-style-type: none"> - High batch-to-batch consistency and reproducibility - Improved sensitivity and specificity - Long-term security of supply - Animal-free production <p>For more information see here.</p> <p>Our RabMAb[®] technology is a patented hybridoma-based technology for making rabbit monoclonal antibodies. For details on our patents, please refer to RabMAb[®] patents.</p>

Properties

Form	Liquid
Storage instructions	Shipped at 4°C. Store at +4°C short term (1-2 weeks). Upon delivery aliquot. Store at -20°C long term. Avoid freeze / thaw cycle.
Storage buffer	<p>pH: 7.2</p> <p>Preservative: 0.01% Sodium azide</p> <p>Constituents: 40% Glycerol (glycerin, glycerine), 0.05% BSA, 59% PBS</p>
Purity	Protein A purified
Clonality	Monoclonal
Clone number	EPR11592-129

Isotype IgG

Applications

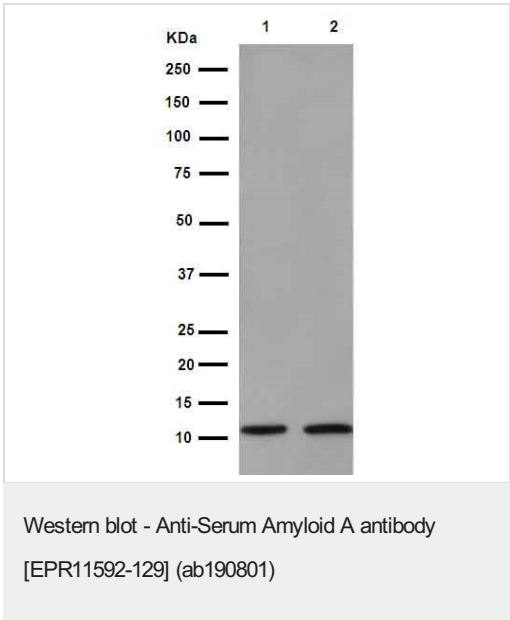
The Abpromise guarantee Our **Abpromise guarantee** covers the use of ab190801 in the following tested applications. The application notes include recommended starting dilutions; optimal dilutions/concentrations should be determined by the end user.

Application	Abreviews	Notes
WB		1/1000. Detects a band of approximately 12 kDa (predicted molecular weight: 14 kDa).

Target

Relevance Function: Major acute phase reactant. Apolipoprotein of the HDL complex. Tissue specificity: Expressed by the liver; secreted in plasma. Disease: Note=Reactive, secondary amyloidosis is characterized by the extracellular accumulation in various tissues of the SAA protein. These deposits are highly insoluble and resistant to proteolysis; they disrupt tissue structure and compromise function. Note=Elevated serum SAA protein levels may be associated with lung cancer. Similarity: Belongs to the SAA family. PTM: This protein is the precursor of amyloid protein A, which is formed by the removal of approximately 24 residues from the C-terminal end.

Images



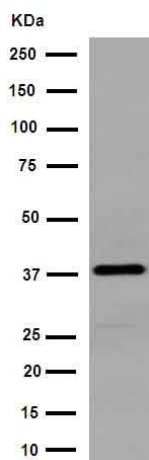
All lanes : Anti-Serum Amyloid A antibody [EPR11592-129] (ab190801) at 1/1000 dilution

Lane 1 : Human serum lysate
Lane 2 : Human plasma lysate

Lysates/proteins at 10 µg per lane.

Secondary
All lanes : Anti-Rabbit IgG (HRP), specific to the non-reduced form of IgG at 1/1000 dilution

Predicted band size: 14 kDa
Observed band size: 12 kDa



Western blot - Anti-Serum Amyloid A antibody
[EPR11592-129] (ab190801)

Anti-Serum Amyloid A antibody [EPR11592-129] (ab190801) at
1/5000 dilution + Human Serum Amyloid A2 recombinant protein
(UniProt P0DJ19) with proprietary tag at 0.01 µg

Secondary

Anti-Rabbit IgG (HRP), specific to the non-reduced form of IgG at
1/1000 dilution

Predicted band size: 14 kDa

Observed band size: 38 kDa

Why choose a recombinant antibody?



Research with confidence
Consistent and reproducible results



Long-term and scalable supply
Recombinant technology



Success from the first experiment
Confirmed specificity



Ethical standards compliant
Animal-free production

Anti-Serum Amyloid A antibody [EPR11592-129]
(ab190801)

Please note: All products are "FOR RESEARCH USE ONLY. NOT FOR USE IN DIAGNOSTIC PROCEDURES"

Our Abpromise to you: Quality guaranteed and expert technical support

- Replacement or refund for products not performing as stated on the datasheet
- Valid for 12 months from date of delivery
- Response to your inquiry within 24 hours
- We provide support in Chinese, English, French, German, Japanese and Spanish
- Extensive multi-media technical resources to help you

- We investigate all quality concerns to ensure our products perform to the highest standards

If the product does not perform as described on this datasheet, we will offer a refund or replacement. For full details of the Abpromise, please visit <https://www.abcam.com/abpromise> or contact our technical team.

Terms and conditions

- Guarantee only valid for products bought direct from Abcam or one of our authorized distributors