




Product datasheet

Anti-SFRS7/SRSF7 antibody ab137247

[2 References](#) [2 Images](#)

Overview

Product name	Anti-SFRS7/SRSF7 antibody
Description	Rabbit polyclonal to SFRS7/SRSF7
Host species	Rabbit
Tested applications	Suitable for: IHC-P, IP
Species reactivity	Reacts with: Mouse, Human Predicted to work with: Rat, Rabbit, Horse, Chicken, Guinea pig, Cow, Dog, Turkey, Pig, Chimpanzee, Rhesus monkey, Gorilla, Orangutan, Platypus 
Immunogen	Synthetic peptide corresponding to Human SFRS7/SRSF7 aa 75-125. Sequence: SRVRVELSTGMPRRSRFDRPPARRPFDPNDRCYECGEK GHYAYDCHRYSR R Database link: NP_001026854.1  Run BLAST with  Run BLAST with
Positive control	HeLa whole cell lysate (ab150035)
General notes	<p>The Life Science industry has been in the grips of a reproducibility crisis for a number of years. Abcam is leading the way in addressing this with our range of recombinant monoclonal antibodies and knockout edited cell lines for gold-standard validation. Please check that this product meets your needs before purchasing.</p> <p>If you have any questions, special requirements or concerns, please send us an inquiry and/or contact our Support team ahead of purchase. Recommended alternatives for this product can be found below, along with publications, customer reviews and Q&As</p>

Properties

Form	Liquid
Storage instructions	Shipped at 4°C. Upon delivery aliquot and store at -20°C. Avoid freeze / thaw cycles.
Storage buffer	pH: 7 Preservative: 0.09% Sodium azide Constituent: 99% Tris citrate/phosphate

	pH 7 to 8
Purity	Immunogen affinity purified
Purification notes	ab137247 was affinity purified using an epitope specific to SRSF7/SRSF7 immobilized on solid support
Clonality	Polyclonal
Isotype	IgG

Applications

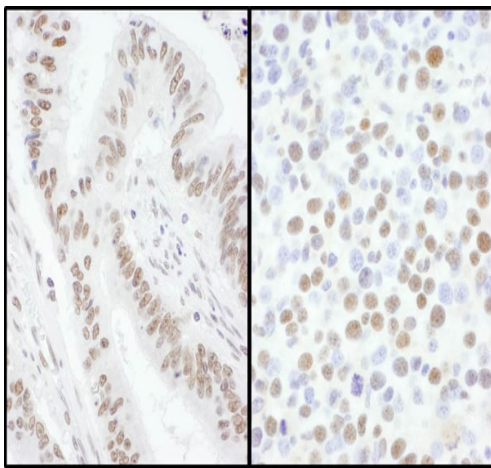
The Abpromise guarantee Our **Abpromise guarantee** covers the use of ab137247 in the following tested applications. The application notes include recommended starting dilutions; optimal dilutions/concentrations should be determined by the end user.

Application	Abreviews	Notes
IHC-P		1/1000 - 1/5000. Perform heat mediated antigen retrieval before commencing with IHC staining protocol.
IP		Use at 2-10 µg/mg of lysate.

Target

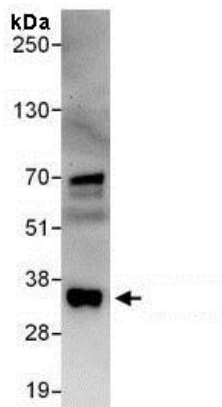
Function	Required for pre-mRNA splicing. Can also modulate alternative splicing in vitro. Represses the splicing of MAPT/Tau exon 10.
Tissue specificity	Brain, liver, kidney and lung.
Sequence similarities	Belongs to the splicing factor SR family. Contains 1 CCHC-type zinc finger. Contains 1 RRM (RNA recognition motif) domain.
Post-translational modifications	Extensively phosphorylated on serine residues in the RS domain.
Cellular localization	Nucleus.

Images



Immunohistochemistry (Formalin/PFA-fixed paraffin-embedded sections) - Anti-SFRS7/SRSF7 antibody (ab137247)

Immunohistochemistry (Formalin/PFA-fixed paraffin-embedded sections) analysis of human colon carcinoma (left) and mouse renal cell carcinoma (right) tissues labelling SRSF7/SRSF7 with ab137247 at 1/5000 (0.2µg/ml) and 1/1000 (1µg/ml) . Detection: DAB.



Immunoprecipitation - Anti-SFRS7/SRSF7 antibody (ab137247)

Immunoprecipitation with ab137247 at 6µg/mg lysate. 1 mg of HeLa whole cell lysate used for IP (20% of IP loaded). Subsequent WB detection used an anti-SFRS7/SRSF7 antibody which recognizes a downstream epitope at 1 µg/ml. Detected by chemiluminescence with exposure time of 30 seconds.

Please note: All products are "FOR RESEARCH USE ONLY. NOT FOR USE IN DIAGNOSTIC PROCEDURES"

Our Abpromise to you: Quality guaranteed and expert technical support

- Replacement or refund for products not performing as stated on the datasheet
- Valid for 12 months from date of delivery
- Response to your inquiry within 24 hours
- We provide support in Chinese, English, French, German, Japanese and Spanish
- Extensive multi-media technical resources to help you
- We investigate all quality concerns to ensure our products perform to the highest standards

If the product does not perform as described on this datasheet, we will offer a refund or replacement. For full details of the Abpromise, please visit <https://www.abcam.com/abpromise> or contact our technical team.

Terms and conditions

- Guarantee only valid for products bought direct from Abcam or one of our authorized distributors