

Product datasheet

Anti-SGLT2 antibody [3G8] ab58298

★★★★★ [2 Abreviews](#) [3 References](#) [2 Images](#)

Overview

Product name	Anti-SGLT2 antibody [3G8]
Description	Mouse monoclonal [3G8] to SGLT2
Host species	Mouse
Tested applications	Suitable for: WB, Flow Cyt
Species reactivity	Reacts with: Human, Recombinant fragment
Immunogen	Recombinant fragment: GLFDKYLGAATSLTVSEDPAVGNISFCYRPRPDSYHLLRHPVTGDL PWP , corresponding to amino acids 228-278 of Human SGLT2 Run BLAST with EXPASY Run BLAST with NCBI
General notes	<p>This product was changed from ascites to tissue culture supernatant on 12/3/19. Please note that the dilutions may need to be adjusted accordingly. If you have any questions, please do not hesitate to contact our scientific support team.</p> <p>The Life Science industry has been in the grips of a reproducibility crisis for a number of years. Abcam is leading the way in addressing this with our range of recombinant monoclonal antibodies and knockout edited cell lines for gold-standard validation. Please check that this product meets your needs before purchasing.</p> <p>If you have any questions, special requirements or concerns, please send us an inquiry and/or contact our Support team ahead of purchase. Recommended alternatives for this product can be found below, along with publications, customer reviews and Q&As</p>

Properties

Form	Liquid
Storage instructions	Shipped at 4°C. Upon delivery aliquot and store at -20°C or -80°C. Avoid repeated freeze / thaw cycles.
Storage buffer	pH: 7.40 Constituent: PBS
Purity	Tissue culture supernatant
Clonality	Monoclonal
Clone number	3G8
Isotype	IgG2a

Light chain type

kappa

Applications

The Abpromise guarantee

Our **Abpromise guarantee** covers the use of ab58298 in the following tested applications.

The application notes include recommended starting dilutions; optimal dilutions/concentrations should be determined by the end user.

Application	Abreviews	Notes
WB		Use at an assay dependent concentration. Predicted molecular weight: 73 kDa. This antibody has only been tested in WB against the recombinant fragment used as immunogen. We have no data on the detection of endogenous protein.
Flow Cyt		Use at an assay dependent concentration. ab170191 - Mouse monoclonal IgG2a, is suitable for use as an isotype control with this antibody.

Target

Function

Sodium-dependent glucose transporter. Has a Na(+) to glucose coupling ratio of 1:1. Efficient substrate transport in mammalian kidney is provided by the concerted action of a low affinity high capacity and a high affinity low capacity Na(+)/glucose cotransporter arranged in series along kidney proximal tubules.

Involvement in disease

Defects in SLC5A2 are the cause of renal glucosuria (GLYS1) [MIM:233100]. GLYS1 is an autosomal recessive disorder characterized by a normal fasting serum glucose concentration and persistent isolated glucosuria, with a normal glucose tolerance test.

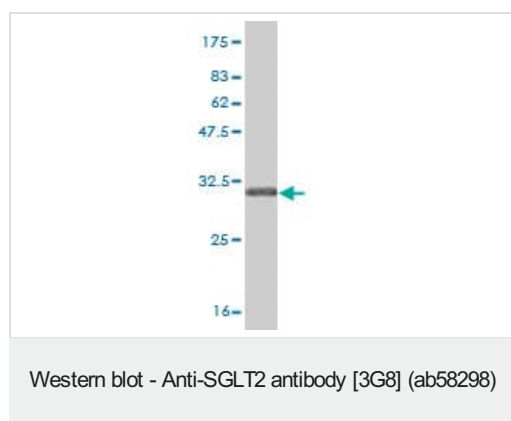
Sequence similarities

Belongs to the sodium:solute symporter (SSF) (TC 2.A.21) family.

Cellular localization

Membrane.

Images



Western blot against tagged recombinant protein immunogen using ab58298 SGLT2 antibody at 1ug/ml. Predicted band size of immunogen is 32 kDa

This image was generated using the ascites version of the product.

Flow Cytometry - Anti-SGLT2 antibody [3G8]
(ab58298)

Overlay histogram showing HEK293 cells stained with ab58298 (red line). The cells were fixed with 80% methanol (5 min) and incubated in 1x PBS / 10% normal goat serum / 0.3M glycine to block non-specific protein-protein interactions. The cells were then incubated with the antibody (ab58298, 1 µg/1x10⁶ cells) for 30 min at 22°C. The secondary antibody used was DyLight® 488 goat anti-mouse IgG (H+L) (**ab96879**) at 1/500 dilution for 30 min at 22°C. Isotype control antibody (black line) was mouse IgG2a [C1G2A] (**ab91361**, 1 µg/1x10⁶ cells) used under the same conditions. Acquisition of >5,000 events was performed. Please note that Abcam do not have any data for use of this antibody on non-fixed cells. We welcome any customer feedback.

This image was generated using the ascites version of the product.

Please note: All products are "FOR RESEARCH USE ONLY. NOT FOR USE IN DIAGNOSTIC PROCEDURES"

Our Abpromise to you: Quality guaranteed and expert technical support

- Replacement or refund for products not performing as stated on the datasheet
- Valid for 12 months from date of delivery
- Response to your inquiry within 24 hours
- We provide support in Chinese, English, French, German, Japanese and Spanish
- Extensive multi-media technical resources to help you
- We investigate all quality concerns to ensure our products perform to the highest standards

If the product does not perform as described on this datasheet, we will offer a refund or replacement. For full details of the Abpromise, please visit <https://www.abcam.com/abpromise> or contact our technical team.

Terms and conditions

- Guarantee only valid for products bought direct from Abcam or one of our authorized distributors