

Anti-Sialoadhesin/CD169 antibody [3D6.112] ab53443

[6 References](#) [1 Image](#)

Overview

Product name	Anti-Sialoadhesin/CD169 antibody [3D6.112]
Description	Rat monoclonal [3D6.112] to Sialoadhesin/CD169
Host species	Rat
Tested applications	Suitable for: IHC-Fr
Species reactivity	Reacts with: Mouse
Immunogen	Full length native protein (purified). This information is proprietary to Abcam and/or its suppliers.
General notes	<p>Fusion partners: Spleen cells from an immunised AO rat were fused with the cells of the Y3 rat myeloma cell line.</p> <p>The Life Science industry has been in the grips of a reproducibility crisis for a number of years. Abcam is leading the way in addressing this with our range of recombinant monoclonal antibodies and knockout edited cell lines for gold-standard validation. Please check that this product meets your needs before purchasing.</p> <p>If you have any questions, special requirements or concerns, please send us an inquiry and/or contact our Support team ahead of purchase. Recommended alternatives for this product can be found below, along with publications, customer reviews and Q&As</p>

Properties

Form	Liquid
Storage instructions	Shipped at 4°C. Store at +4°C short term (1-2 weeks). Upon delivery aliquot. Store at -20°C long term.
Storage buffer	Preservative: 0.09% Sodium azide Constituent: PBS
Purity	Protein G purified
Purification notes	Purified IgG prepared by affinity chromatography on Protein G from tissue culture supernatant.
Primary antibody notes	Fusion partners: Spleen cells from an immunised AO rat were fused with the cells of the Y3 rat myeloma cell line.
Clonality	Monoclonal
Clone number	3D6.112
Isotype	IgG2a

Applications

The Abpromise guarantee

Our **Abpromise guarantee** covers the use of ab53443 in the following tested applications.

The application notes include recommended starting dilutions; optimal dilutions/concentrations should be determined by the end user.

Application	Abreviews	Notes
IHC-Fr		1/50 - 1/100.

Target

Function

Acts as an endocytic receptor mediating clathrin dependent endocytosis. Macrophage-restricted adhesion molecule that mediates sialic-acid dependent binding to lymphocytes, including granulocytes, monocytes, natural killer cells, B-cells and CD8 T-cells. Preferentially binds to alpha-2,3-linked sialic acid (By similarity). Binds to SPN/CD43 on T-cells (By similarity). May play a role in hemopoiesis.

Tissue specificity

Expressed by macrophages in various tissues. High levels are found in spleen, lymph node, perivascular macrophages in brain and lower levels in bone marrow, liver Kupffer cells and lamina propria of colon and lung. Also expressed by inflammatory macrophages in rheumatoid arthritis.

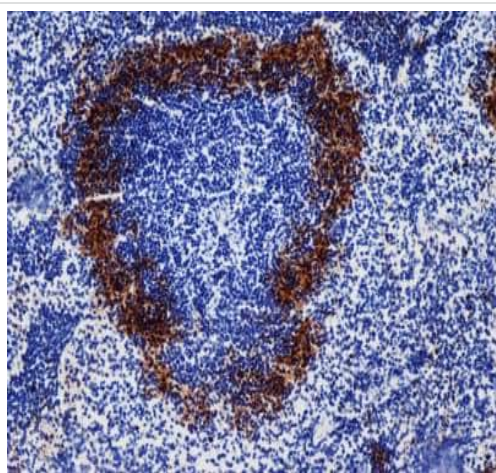
Sequence similarities

Belongs to the immunoglobulin superfamily. SIGLEC (sialic acid binding Ig-like lectin) family. Contains 16 Ig-like C2-type (immunoglobulin-like) domains. Contains 1 Ig-like V-type (immunoglobulin-like) domain.

Cellular localization

Secreted and Cell membrane.

Images



Immunohistochemistry (Frozen sections) - Anti-Sialoadhesin/CD169 antibody [3D6.112] (ab53443)

ab53443 staining Sialoadhesin/CD169 in mouse spleen by Immunohistochemistry (Frozen sections).

Please note: All products are "FOR RESEARCH USE ONLY. NOT FOR USE IN DIAGNOSTIC PROCEDURES"

Our Abpromise to you: Quality guaranteed and expert technical support

- Replacement or refund for products not performing as stated on the datasheet
- Valid for 12 months from date of delivery
- Response to your inquiry within 24 hours

- We provide support in Chinese, English, French, German, Japanese and Spanish
- Extensive multi-media technical resources to help you
- We investigate all quality concerns to ensure our products perform to the highest standards

If the product does not perform as described on this datasheet, we will offer a refund or replacement. For full details of the Abpromise, please visit [**https://www.abcam.com/abpromise**](https://www.abcam.com/abpromise) or contact our technical team.

Terms and conditions

- Guarantee only valid for products bought direct from Abcam or one of our authorized distributors