

Product datasheet

Anti-SIGLEC11 antibody [EPR8506(2)] αb157187

Recombinant RabMAb

2 Images

Overview

Product name	Anti-SIGLEC11 antibody [EPR8506(2)]
Description	Rabbit monoclonal [EPR8506(2)] to SIGLEC11
Host species	Rabbit
Tested applications	Suitable for: WB Unsuitable for: Flow Cyt, ICC/IF or IHC-P
Species reactivity	Reacts with: Human
Immunogen	Synthetic peptide. This information is proprietary to Abcam and/or its suppliers.
Positive control	Human fetal brain and fetal liver lysates.
General notes	<p>This product is a recombinant monoclonal antibody, which offers several advantages including:</p> <ul style="list-style-type: none"> - High batch-to-batch consistency and reproducibility - Improved sensitivity and specificity - Long-term security of supply - Animal-free production <p>For more information see here.</p> <p>Our RabMAb[®] technology is a patented hybridoma-based technology for making rabbit monoclonal antibodies. For details on our patents, please refer to RabMAb[®] patents.</p> <p>Mouse, Rat: We have preliminary internal testing data to indicate this antibody may not react with these species. Please contact us for more information.</p>

Properties

Form	Liquid
Storage instructions	Shipped at 4°C. Store at -20°C.
Storage buffer	<p>pH: 7.2</p> <p>Preservative: 0.01% Sodium azide</p> <p>Constituents: 9% PBS, 40% Glycerol (glycerin, glycerine), 0.05% BSA, 50% Tissue culture supernatant</p>
Purity	Tissue culture supernatant
Clonality	Monoclonal

Clone number	EPR8506(2)
Isotype	IgG

Applications

The Abpromise guarantee Our **Abpromise guarantee** covers the use of ab157187 in the following tested applications. The application notes include recommended starting dilutions; optimal dilutions/concentrations should be determined by the end user.

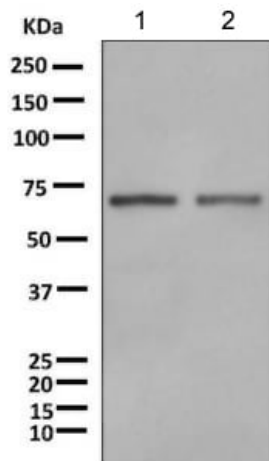
Application	Abreviews	Notes
WB		1/1000 - 1/5000. Predicted molecular weight: 66 kDa.

Application notes Is unsuitable for Flow Cyt, ICC/IF or IHC-P.

Target

Function	Putative adhesion molecule that mediates sialic-acid dependent binding to cells. Preferentially binds to alpha-2,8-linked sialic acid. The sialic acid recognition site may be masked by cis interactions with sialic acids on the same cell surface. In the immune response, may act as an inhibitory receptor upon ligand induced tyrosine phosphorylation by recruiting cytoplasmic phosphatase(s) via their SH2 domain(s) that block signal transduction through dephosphorylation of signaling molecules.
Tissue specificity	Expressed by macrophages in various tissues including Kupffer cells. Also found in brain microglia.
Sequence similarities	Belongs to the immunoglobulin superfamily. SIGLEC (sialic acid binding Ig-like lectin) family. Contains 3 Ig-like C2-type (immunoglobulin-like) domains. Contains 1 Ig-like V-type (immunoglobulin-like) domain.
Domain	Contains 1 copy of a cytoplasmic motif that is referred to as the immunoreceptor tyrosine-based inhibitor motif (ITIM). This motif is involved in modulation of cellular responses. The phosphorylated ITIM motif can bind the SH2 domain of several SH2-containing phosphatases.
Post-translational modifications	Phosphorylated on tyrosine residues.
Cellular localization	Membrane.

Images



Western blot - Anti-SIGLEC11 antibody
[EPR8506(2)] (ab157187)

All lanes : Anti-SIGLEC11 antibody [EPR8506(2)] (ab157187) at 1/1000 dilution

Lane 1 : Human fetal brain lysate

Lane 2 : Human fetal liver lysate

Lysates/proteins at 10 µg per lane.

Secondary

All lanes : HRP labelled goat anti-rabbit at 1/2000 dilution

Predicted band size: 66 kDa

Why choose a recombinant antibody?



Research with confidence
Consistent and reproducible results



Long-term and scalable supply
Recombinant technology



Success from the first experiment
Confirmed specificity



Ethical standards compliant
Animal-free production

Anti-SIGLEC11 antibody [EPR8506(2)] (ab157187)

Please note: All products are "FOR RESEARCH USE ONLY. NOT FOR USE IN DIAGNOSTIC PROCEDURES"

Our Abpromise to you: Quality guaranteed and expert technical support

- Replacement or refund for products not performing as stated on the datasheet
- Valid for 12 months from date of delivery

- Response to your inquiry within 24 hours
- We provide support in Chinese, English, French, German, Japanese and Spanish
- Extensive multi-media technical resources to help you
- We investigate all quality concerns to ensure our products perform to the highest standards

If the product does not perform as described on this datasheet, we will offer a refund or replacement. For full details of the Abpromise, please visit <https://www.abcam.com/abpromise> or contact our technical team.

Terms and conditions

- Guarantee only valid for products bought direct from Abcam or one of our authorized distributors