


## Product datasheet

### Anti-SIK3 antibody ab88495

★★★★★ [1 Abreviews](#) [2 References](#) [2 Images](#)

#### Overview

Product name	Anti-SIK3 antibody
Description	Rabbit polyclonal to SIK3
Host species	Rabbit
Tested applications	<b>Suitable for:</b> WB, IP
Species reactivity	<b>Reacts with:</b> Mouse, Human <b>Predicted to work with:</b> Chimpanzee, Gorilla, Orangutan 
Immunogen	Synthetic peptide corresponding to Human SIK3. Database link: <a href="#">Q9Y2K2</a>
General notes	<p>The Life Science industry has been in the grips of a reproducibility crisis for a number of years. Abcam is leading the way in addressing this with our range of recombinant monoclonal antibodies and knockout edited cell lines for gold-standard validation. Please check that this product meets your needs before purchasing.</p> <p>If you have any questions, special requirements or concerns, please send us an inquiry and/or contact our Support team ahead of purchase. Recommended alternatives for this product can be found below, along with publications, customer reviews and Q&amp;As</p>

#### Properties

Form	Liquid
Storage instructions	Shipped at 4°C. Upon delivery aliquot and store at -20°C. Avoid freeze / thaw cycles.
Storage buffer	pH: 7 Preservative: 0.09% Sodium azide Constituent: Tris citrate/phosphate
Purity	Immunogen affinity purified
Clonality	Polyclonal
Isotype	IgG

#### Applications

**The Abpromise guarantee** Our **[Abpromise guarantee](#)** covers the use of ab88495 in the following tested applications.

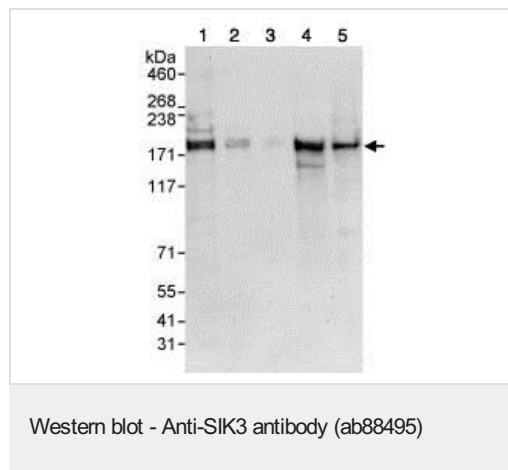
The application notes include recommended starting dilutions; optimal dilutions/concentrations should be determined by the end user.

Application	Abreviews	Notes
WB	★★★★★ (1)	1/2000 - 1/10000. Predicted molecular weight: 140 kDa.
IP		Use at 2-5 µg/mg of lysate.

## Target

<b>Sequence similarities</b>	Belongs to the protein kinase superfamily. CAMK Ser/Thr protein kinase family. SNF1 subfamily. Contains 1 protein kinase domain. Contains 1 UBA domain.
<b>Post-translational modifications</b>	Phosphorylated at Thr-163 by STK11/LKB1 in complex with STE20-related adapter-alpha (STRADA) pseudo kinase and CAB39.
<b>Cellular localization</b>	Cytoplasm. Locates to punctate structures within the cytoplasm on binding to YWHAZ.

## Images



**All lanes :** Anti-SIK3 antibody (ab88495) at 0.4 µg/ml

**Lane 1 :** HeLa cell lysate at 50 µg

**Lane 2 :** HeLa cell lysate at 15 µg

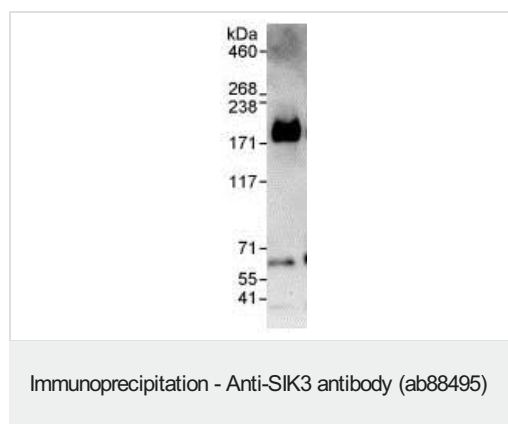
**Lane 3 :** HeLa cell lysate at 5 µg

**Lane 4 :** 293T cell lysate at 50 µg

**Lane 5 :** NIH3T3 cell lysate at 50 µg

**Predicted band size:** 140 kDa

**Exposure time:** 30 seconds



3ug ab88495 were used to immunoprecipitate 1mg HeLa whole cell lysate. 20% of immunoprecipitate was loaded on gel and probed with ab88495 at 1ug/ml.

Detection: chemoluminescence with exposure time of 3 minutes.

**Please note:** All products are "FOR RESEARCH USE ONLY. NOT FOR USE IN DIAGNOSTIC PROCEDURES"

### **Our Abpromise to you: Quality guaranteed and expert technical support**

---

- Replacement or refund for products not performing as stated on the datasheet
- Valid for 12 months from date of delivery
- Response to your inquiry within 24 hours
  
- We provide support in Chinese, English, French, German, Japanese and Spanish
- Extensive multi-media technical resources to help you
- We investigate all quality concerns to ensure our products perform to the highest standards

If the product does not perform as described on this datasheet, we will offer a refund or replacement. For full details of the Abpromise, please visit <https://www.abcam.com/abpromise> or contact our technical team.

### **Terms and conditions**

---

- Guarantee only valid for products bought direct from Abcam or one of our authorized distributors