


Product datasheet

Anti-Skp1 antibody ab228637

3 Images

Overview

Product name	Anti-Skp1 antibody
Description	Rabbit polyclonal to Skp1
Host species	Rabbit
Tested applications	Suitable for: WB, IHC-P
Species reactivity	Reacts with: Mouse, Human Predicted to work with: Rat, Sheep, Chicken, Guinea pig, Cow, Dog, Xenopus laevis, Zebrafish, Rhesus monkey 
Immunogen	Recombinant fragment within Human Skp1 (internal sequence). The exact sequence is proprietary. Database link: <u>P63208</u>
Positive control	WB: NIH/3T3, A549, NCI-H1299, HCT 116 and MCF7 whole cell lysates. IHC-P: Mouse middle brain tissue.
General notes	<p>The Life Science industry has been in the grips of a reproducibility crisis for a number of years. Abcam is leading the way in addressing this with our range of recombinant monoclonal antibodies and knockout edited cell lines for gold-standard validation. Please check that this product meets your needs before purchasing.</p> <p>If you have any questions, special requirements or concerns, please send us an inquiry and/or contact our Support team ahead of purchase. Recommended alternatives for this product can be found below, along with publications, customer reviews and Q&As</p>

Properties

Form	Liquid
Storage instructions	Shipped at 4°C. Store at +4°C short term (1-2 weeks). Upon delivery aliquot. Store at -20°C long term. Avoid freeze / thaw cycle.
Storage buffer	pH: 7.00 Preservative: 0.01% Thimerosal (merthiolate) Constituents: 78.99% PBS, 1% BSA, 20% Glycerol (glycerin, glycerine)
Purity	Immunogen affinity purified
Clonality	Polyclonal
Isotype	IgG

Applications

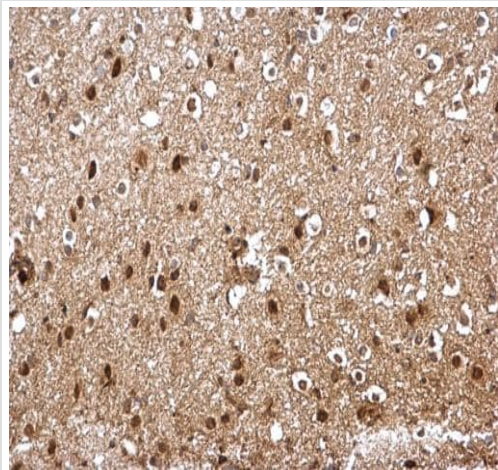
The Abpromise guarantee Our **Abpromise guarantee** covers the use of ab228637 in the following tested applications. The application notes include recommended starting dilutions; optimal dilutions/concentrations should be determined by the end user.

Application	Abreviews	Notes
WB		1/500 - 1/3000. Predicted molecular weight: 19 kDa.
IHC-P		1/100 - 1/1000.

Target

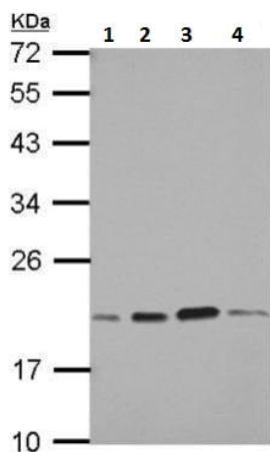
Function	Essential component of the SCF (SKP1-CUL1-F-box protein) ubiquitin ligase complex, which mediates the ubiquitination of proteins involved in cell cycle progression, signal transduction and transcription. In the SCF complex, serves as an adapter that links the F-box protein to CUL1. SCF(BTRC) mediates the ubiquitination of NFKBIA at 'Lys-21' and 'Lys-22'; the degradation frees the associated NFKB1-RELA dimer to translocate into the nucleus and to activate transcription. SCF(Cyclin F) directs ubiquitination of CP110.
Pathway	Protein modification; protein ubiquitination.
Sequence similarities	Belongs to the SKP1 family.

Images



Paraffin-embedded mouse middle brain tissue stained for Skp1 with ab228637 at 1/500 dilution in immunohistochemical analysis.

Immunohistochemistry (Formalin/PFA-fixed paraffin-embedded sections) - Anti-Skp1 antibody (ab228637)



Western blot - Anti-Skp1 antibody (ab228637)

All lanes : Anti-Skp1 antibody (ab228637) at 1/1000 dilution

Lane 1 : A549 (human lung carcinoma cell line) whole cell lysate

Lane 2 : NCI-H1299 (human lung carcinoma cell line) whole cell lysate

Lane 3 : HCT 116 (human colorectal carcinoma cell line) whole cell lysate

Lane 4 : MCF7 (human breast adenocarcinoma cell line) whole cell lysate

Lysates/proteins at 30 µg per lane.

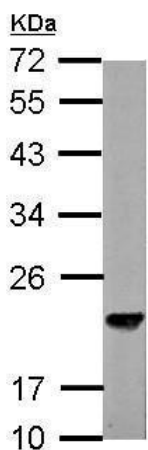
Secondary

All lanes : HRP-conjugated anti-rabbit IgG

Developed using the ECL technique.

Predicted band size: 19 kDa

12% SDS-PAGE



Western blot - Anti-Skp1 antibody (ab228637)

Anti-Skp1 antibody (ab228637) at 1/3000 dilution + NIH/3T3 (mouse embryo fibroblast cell line) whole cell lysate at 30 µg

Secondary

HRP-conjugated anti-rabbit IgG

Developed using the ECL technique.

Predicted band size: 19 kDa

12% SDS-PAGE

Please note: All products are "FOR RESEARCH USE ONLY. NOT FOR USE IN DIAGNOSTIC PROCEDURES"

Our Abpromise to you: Quality guaranteed and expert technical support

- Replacement or refund for products not performing as stated on the datasheet
- Valid for 12 months from date of delivery
- Response to your inquiry within 24 hours

- We provide support in Chinese, English, French, German, Japanese and Spanish
- Extensive multi-media technical resources to help you
- We investigate all quality concerns to ensure our products perform to the highest standards

If the product does not perform as described on this datasheet, we will offer a refund or replacement. For full details of the Abpromise, please visit <https://www.abcam.com/abpromise> or contact our technical team.

Terms and conditions

- Guarantee only valid for products bought direct from Abcam or one of our authorized distributors