


## Product datasheet

### Anti-SKP2 antibody ab19877

KO VALIDATED

★★★★★ [2 Abreviews](#) [9 References](#) [3 Images](#)

#### Overview

Product name	Anti-SKP2 antibody
Description	Rabbit polyclonal to SKP2
Host species	Rabbit
Tested applications	<b>Suitable for:</b> ICC/IF, WB
Species reactivity	<b>Reacts with:</b> Human <b>Predicted to work with:</b> Mouse, Dog 
Immunogen	Synthetic peptide conjugated to KLH derived from within residues 1 - 100 of Human SKP2. Read Abcam's proprietary immunogen policy (Peptide available as <a href="#">ab26153</a> .)
Positive control	Recombinant Human SKP2 protein ( <a href="#">ab114385</a> ) can be used as a positive control in WB. Human heart tissue lysate This antibody gave a positive signal in the following formaldehyde fixed cell line: HeLa
General notes	<p>The Life Science industry has been in the grips of a reproducibility crisis for a number of years. Abcam is leading the way in addressing this with our range of recombinant monoclonal antibodies and knockout edited cell lines for gold-standard validation. Please check that this product meets your needs before purchasing.</p> <p>If you have any questions, special requirements or concerns, please send us an inquiry and/or contact our Support team ahead of purchase. Recommended alternatives for this product can be found below, along with publications, customer reviews and Q&amp;As</p>

#### Properties

Form	Liquid
Storage instructions	Shipped at 4°C. Store at +4°C short term (1-2 weeks). Upon delivery aliquot. Store at -20°C or -80°C. Avoid freeze / thaw cycle.
Storage buffer	pH: 7.40 Preservative: 0.02% Sodium azide Constituent: PBS

Batches of this product that have a concentration < 1mg/ml may have BSA added as a stabilising agent. If you would like information about the formulation of a specific lot, please contact our

	scientific support team who will be happy to help.
<b>Purity</b>	Immunogen affinity purified
<b>Clonality</b>	Polyclonal
<b>Isotype</b>	IgG

## Applications

**The Abpromise guarantee** Our **Abpromise guarantee** covers the use of ab19877 in the following tested applications.

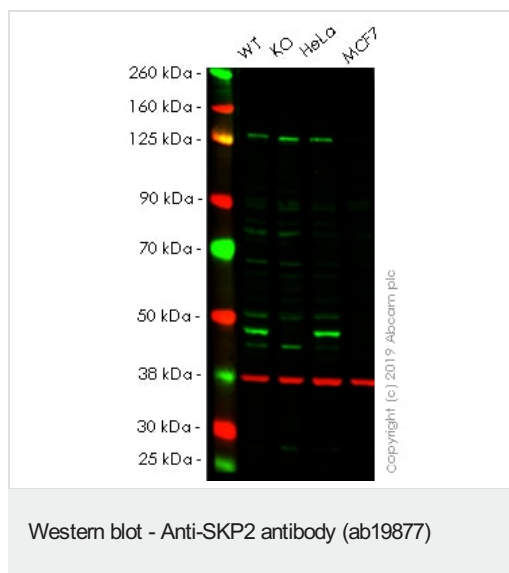
The application notes include recommended starting dilutions; optimal dilutions/concentrations should be determined by the end user.

Application	Abreviews	Notes
ICC/IF		Use a concentration of 5 µg/ml.
WB	★★★★★ (2)	Use a concentration of 1 µg/ml. Detects a band of approximately 46 kDa (predicted molecular weight: 48 kDa).

## Target

<b>Function</b>	Substrate recognition component of a SCF (SKP1-CUL1-F-box protein) E3 ubiquitin-protein ligase complex which mediates the ubiquitination and subsequent proteasomal degradation of target proteins involved in cell cycle progression, signal transduction and transcription. Specifically recognizes phosphorylated CDKN1B/p27kip and is involved in regulation of G1/S transition. Degradation of CDKN1B/p27kip also requires CKS1. Recognizes target proteins ORC1, CDT1, RBL2, MLL, CDK9, RAG2, FOXO1A, UBP43, and probably MYC, TOB1 and TAL1. Degradation of TAL1 also requires STUB1. Recognizes CDKN1A in association with CCNE1 or CCNE2 and CDK2.
<b>Pathway</b>	Protein modification; protein ubiquitination.
<b>Sequence similarities</b>	Contains 1 F-box domain. Contains 9 LRR (leucine-rich) repeats.

## Images



**All lanes :** Anti-SKP2 antibody (ab19877) at 1 µg/ml

**Lane 1 :** Wild-type HAP1 whole cell lysate

**Lane 2 :** SKP2 knockout HAP1 whole cell lysate

**Lane 3 :** HeLa whole cell lysate

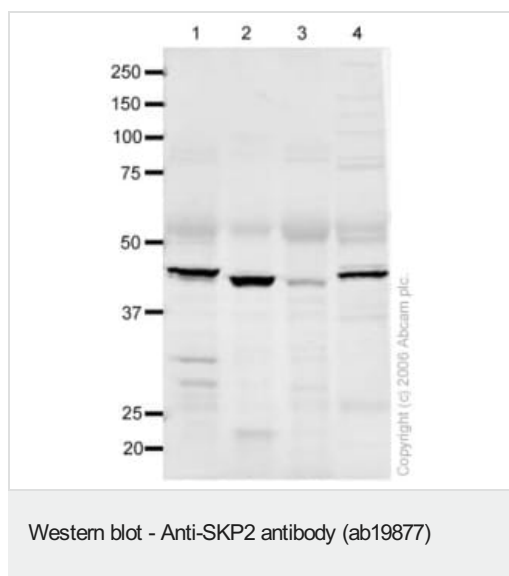
**Lane 4 :** MCF7 whole cell lysate

Lysates/proteins at 20 µg per lane.

**Predicted band size:** 48 kDa

**Lanes 1 - 4:** Merged signal (red and green). Green - ab19877 observed at 52 kDa. Red - loading control, **ab8245**, observed at 37 kDa.

ab19877 was shown to recognize in wild-type HAP1 cells as signal was lost at the expected MW in SKP2 knockout cells. Additional cross-reactive bands were observed in the wild-type and knockout cells. Wild-type and SKP2 knockout samples were subjected to SDS-PAGE. The membrane was blocked with 3% NF Milk. Ab19877 and **ab8245** (Mouse anti GAPDH loading control) were incubated overnight at 4°C at 1 µg/ml and 1/20000 dilution respectively. Blots were developed with Goat anti-Rabbit IgG H&L (IRDye® 800CW) preabsorbed **ab216773** and Goat anti-Mouse IgG H&L (IRDye® 680RD) preabsorbed **ab216776** secondary antibodies at 1/20000 dilution for 1 hour at room temperature before imaging.



**All lanes :** Anti-SKP2 antibody (ab19877) at 1 µg/ml

**Lane 1 :** Human heart tissue lysate

**Lane 2 :** Human brain tissue lysate

**Lane 3 :** Human kidney normal tissue lysate

**Lane 4 :** Human testis tissue lysate

Lysates/proteins at 20 µg per lane.

### Secondary

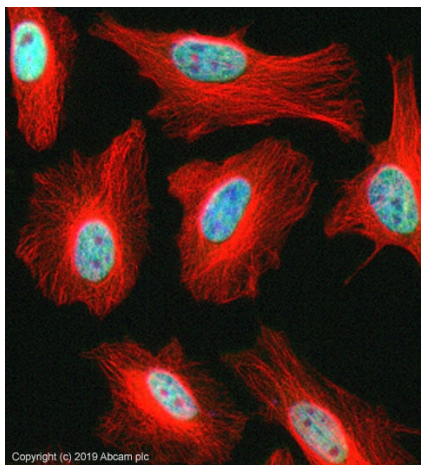
**All lanes :** Goat polyclonal to Rabbit IgG (Alexa Fluor® 680) at 1/10000 dilution

Performed under reducing conditions.

**Predicted band size:** 48 kDa

**Observed band size:** 46 kDa

ab19877 detects a band at approximately 46 kDa that corresponds in size to that predicted for SKP2 (48 kDa). This band is detected in several tissue lysates. This antibody was tested in normal liver tissue lysates, but no band was detected.



Immunocytochemistry/ Immunofluorescence - Anti-SKP2 antibody (ab19877)

ab19877 stained in HeLa cells. Cells were fixed with 4% paraformaldehyde (10 min) at room temperature and incubated with PBS containing 10% goat serum, 0.3 M glycine, 1% BSA and 0.1% Triton for 1h at room temperature to permeabilise the cells and block non-specific protein-protein interactions. The cells were then incubated with the antibody ab19877 at 5µg/ml and **ab7291** (Mouse monoclonal to alpha Tubulin - Loading Control) used at a 1/1000 dilution overnight at +4°C. The secondary antibodies were **ab150081**, Goat Anti-Rabbit IgG H&L (Alexa Fluor® 488) preadsorbed, (pseudo-colored green) and **ab150120**, Goat polyclonal Secondary Antibody to Mouse IgG - H&L (Alexa Fluor® 594) preadsorbed, (colored red), both used at a 1/1000 dilution for 1 hour at room temperature. DAPI was used to stain the cell nuclei (colored blue) at a concentration of 1.43 µM for 1 hour at room temperature.

**Please note:** All products are "FOR RESEARCH USE ONLY. NOT FOR USE IN DIAGNOSTIC PROCEDURES"

### Our Abpromise to you: Quality guaranteed and expert technical support

- Replacement or refund for products not performing as stated on the datasheet
- Valid for 12 months from date of delivery
- Response to your inquiry within 24 hours
- We provide support in Chinese, English, French, German, Japanese and Spanish
- Extensive multi-media technical resources to help you
- We investigate all quality concerns to ensure our products perform to the highest standards

If the product does not perform as described on this datasheet, we will offer a refund or replacement. For full details of the Abpromise, please visit <https://www.abcam.com/abpromise> or contact our technical team.

### Terms and conditions

- Guarantee only valid for products bought direct from Abcam or one of our authorized distributors