

# Anti-SLC12A6/KCC3 antibody ab92951

[1 References](#) [2 Images](#)

### Overview

<b>Product name</b>	Anti-SLC12A6/KCC3 antibody
<b>Description</b>	Rabbit polyclonal to SLC12A6/KCC3
<b>Host species</b>	Rabbit
<b>Specificity</b>	From Jan 2024, QC testing of replenishment batches of this polyclonal changed. All tested and expected application and reactive species combinations are still covered by our Abcam product promise. However, we no longer test all applications. For more information on a specific batch, please contact our Scientific Support who will be happy to help.
<b>Tested applications</b>	<b>Suitable for:</b> ICC/IF, WB
<b>Species reactivity</b>	<b>Reacts with:</b> Human
<b>Immunogen</b>	Synthetic peptide. This information is proprietary to Abcam and/or its suppliers.
<b>Positive control</b>	This antibody gave a positive signal in the following human tissue lysates: Kidney; Skeletal Muscle.
<b>General notes</b>	<p>The Life Science industry has been in the grips of a reproducibility crisis for a number of years. Abcam is leading the way in addressing this with our range of recombinant monoclonal antibodies and knockout edited cell lines for gold-standard validation. Please check that this product meets your needs before purchasing.</p> <p>If you have any questions, special requirements or concerns, please send us an inquiry and/or contact our Support team ahead of purchase. Recommended alternatives for this product can be found below, along with publications, customer reviews and Q&amp;As</p>

### Properties

<b>Form</b>	Liquid
<b>Storage instructions</b>	Shipped at 4°C. Store at +4°C short term (1-2 weeks). Upon delivery aliquot. Store at -20°C or -80°C. Avoid freeze / thaw cycle.
<b>Storage buffer</b>	<p>pH: 7.40</p> <p>Preservative: 0.02% Sodium azide</p> <p>Constituent: PBS</p> <p>Batches of this product that have a concentration &lt; 1mg/ml may have BSA added as a stabilising agent. If you would like information about the formulation of a specific lot, please contact our scientific support team who will be happy to help.</p>

<b>Purity</b>	Immunogen affinity purified
<b>Clonality</b>	Polyclonal
<b>Isotype</b>	IgG

## Applications

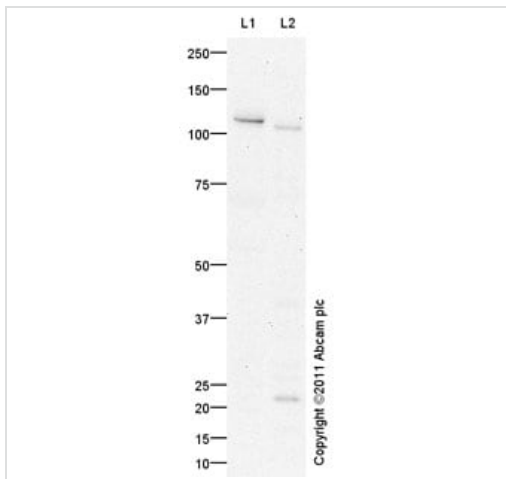
**The Abpromise guarantee** Our **Abpromise guarantee** covers the use of ab92951 in the following tested applications. The application notes include recommended starting dilutions; optimal dilutions/concentrations should be determined by the end user.

Application	Abreviews	Notes
ICC/IF		Use a concentration of 5 µg/ml.
WB		Use a concentration of 1 µg/ml. Detects a band of approximately 128 kDa (predicted molecular weight: 128 kDa).

## Target

<b>Function</b>	Mediates electroneutral potassium-chloride cotransport. May be activated by cell swelling. May contribute to cell volume homeostasis in single cells.
<b>Tissue specificity</b>	Highly expressed in heart, brain and kidney. Detected at lower levels in skeletal muscle, placenta, lung and pancreas. Detected in umbilical vein endothelial cells. Isoform 2 is more abundant in kidney. Isoform 5 is testis specific. Expressed in the proximal tubule of the kidney (at protein level).
<b>Involvement in disease</b>	Agensis of the corpus callosum, with peripheral neuropathy
<b>Sequence similarities</b>	Belongs to the SLC12A transporter family.
<b>Post-translational modifications</b>	N-glycosylated.
<b>Cellular localization</b>	Basolateral cell membrane.

## Images



Western blot - Anti-SLC12A6/KCC3 antibody (ab92951)

**All lanes :** Anti-SLC12A6/KCC3 antibody (ab92951) at 1 µg/ml

**Lane 1 :** Human kidney tissue lysate - total protein ([ab30203](#))

**Lane 2 :** Human skeletal muscle tissue lysate - total protein ([ab29330](#))

Lysates/proteins at 10 µg per lane.

### Secondary

**All lanes :** Goat Anti-Rabbit IgG H&L (HRP) preadsorbed ([ab97080](#)) at 1/5000 dilution

Developed using the ECL technique.

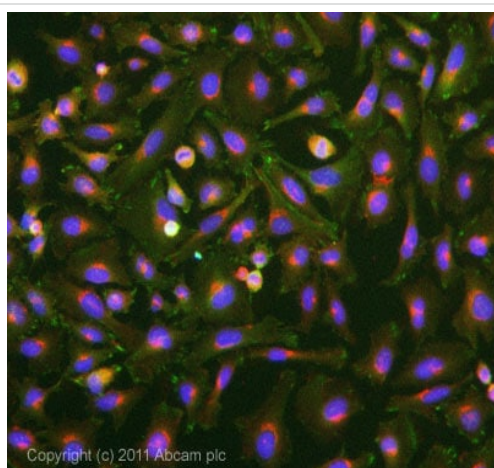
Performed under reducing conditions.

**Predicted band size:** 128 kDa

**Observed band size:** 122,128 kDa

**Exposure time:** 20 minutes

Blocked with 5% Milk for 1 hour. This antibody should recognise both isoforms of SLC12A6/KCC3. It is possible that we are detecting isoform 1 (128-kDa) in human kidney tissue lysate and isoform 2 (122-kDa) in human skeletal muscle lysate.



Immunocytochemistry/ Immunofluorescence - Anti-SLC12A6/KCC3 antibody (ab92951)

ICC/IF image of ab92951 stained HeLa cells. The cells were 100% methanol fixed (5 min) and then incubated in 1%BSA / 10% normal goat serum / 0.3M glycine in 0.1% PBS-Tween for 1h to permeabilise the cells and block non-specific protein-protein interactions. The cells were then incubated with the antibody ab92951 at 5µg/ml overnight at +4°C. The secondary antibody (green) was DyLight® 488 goat anti- rabbit ([ab96899](#)) IgG (H+L) used at a 1/1000 dilution for 1h. Alexa Fluor® 594 WGA was used to label plasma membranes (red) at a 1/200 dilution for 1h. DAPI was used to stain the cell nuclei (blue) at a concentration of 1.43µM. This antibody also gave a positive result in formaldehyde fixed (4%, 10min) HeLa cells at 1ug/ml, and in Methanol fixed (100%, 5min) HepG2 cells at 1ug/ml

### **Our Abpromise to you: Quality guaranteed and expert technical support**

---

- Replacement or refund for products not performing as stated on the datasheet
- Valid for 12 months from date of delivery
- Response to your inquiry within 24 hours
  
- We provide support in Chinese, English, French, German, Japanese and Spanish
- Extensive multi-media technical resources to help you
- We investigate all quality concerns to ensure our products perform to the highest standards

If the product does not perform as described on this datasheet, we will offer a refund or replacement. For full details of the Abpromise, please visit <https://www.abcam.com/abpromise> or contact our technical team.

### **Terms and conditions**

---

- Guarantee only valid for products bought direct from Abcam or one of our authorized distributors